

SUMMERLAND RODEO GROUNDS PUBLIC OPEN HOUSE

WELCOME

Thank you for taking the time to attend the Summerland Rodeo Ground's public open house. These panels are here to provide you with information about the current site and to inspire park improvement ideas for the future.

The District of Summerland staff and members of the design consultant team are here to answer any questions you may have about this project. Please take your time and read through all the information and let us know your vision for the future of the Rodeo Grounds site!

WHY ARE WE HERE ?

The 2018 District of Summerland Parks & Recreation Master Plan recommended that the District: "Undertake a master plan for the Rodeo Grounds, exploring community needs and possible uses for the site, servicing requirements and costs and possible operating arrangements".

The overall goals for the project, partly facilitated by the engagement process are:

- Provide a long-term vision for the property
- Provide staff direction on property operations and management
- Provide recommendations for operational requirements and capital investments including costing over the next 15 years.

Like many smaller communities, one of the main challenges for the District of Summerland is balancing demand for park services with available resources. As the Summerland region grows in both population and popularity the shared community spaces must grow and mature, to meet your needs.

Recognizing the Rodeo Grounds as an important part of the District's cultural heritage, and a vital piece of the region's natural land reserve, direct input from Summerland residents will be key to envisioning a successful future Master Plan of the site.

HAVE YOUR SAY!

Nobody understands Summerland and the Rodeo Grounds like you, and we are here to listen. Please take this time to review our panels, meet the team and share your stories. We have several options for you to share information both here and on-line, so please enjoy yourself and let us hear what you have to say!

For more information on this project, please visit:
www.summerland.ca/rodeo-grounds-master-plan

Summerland Rodeo Grounds Master Planning Public Open House - Wednesday November 23, 2022



Community Survey QR-Code:

PROJECT TIMELINE

	2022	
Project Start Up Site Visit	13	Oct
Meeting with Parks and Recreation Advisory Committee	18	
Key Contributor Workshop	23	Nov
Public Open House		
Online Public Survey Opens		
Engagement Review with City Council	12	Dec
Online Public Survey Closes	15	Dec
	2023	
Preliminary Engagement Report Available Online	06	Jan
(Two) Master Plan Concepts Public Open House & Online Survey	15	Feb
Master Plan Engagement Review with City Council	Mid	Mar
Final Submission of Project Deliverables	Mid	Apr



Presented By:



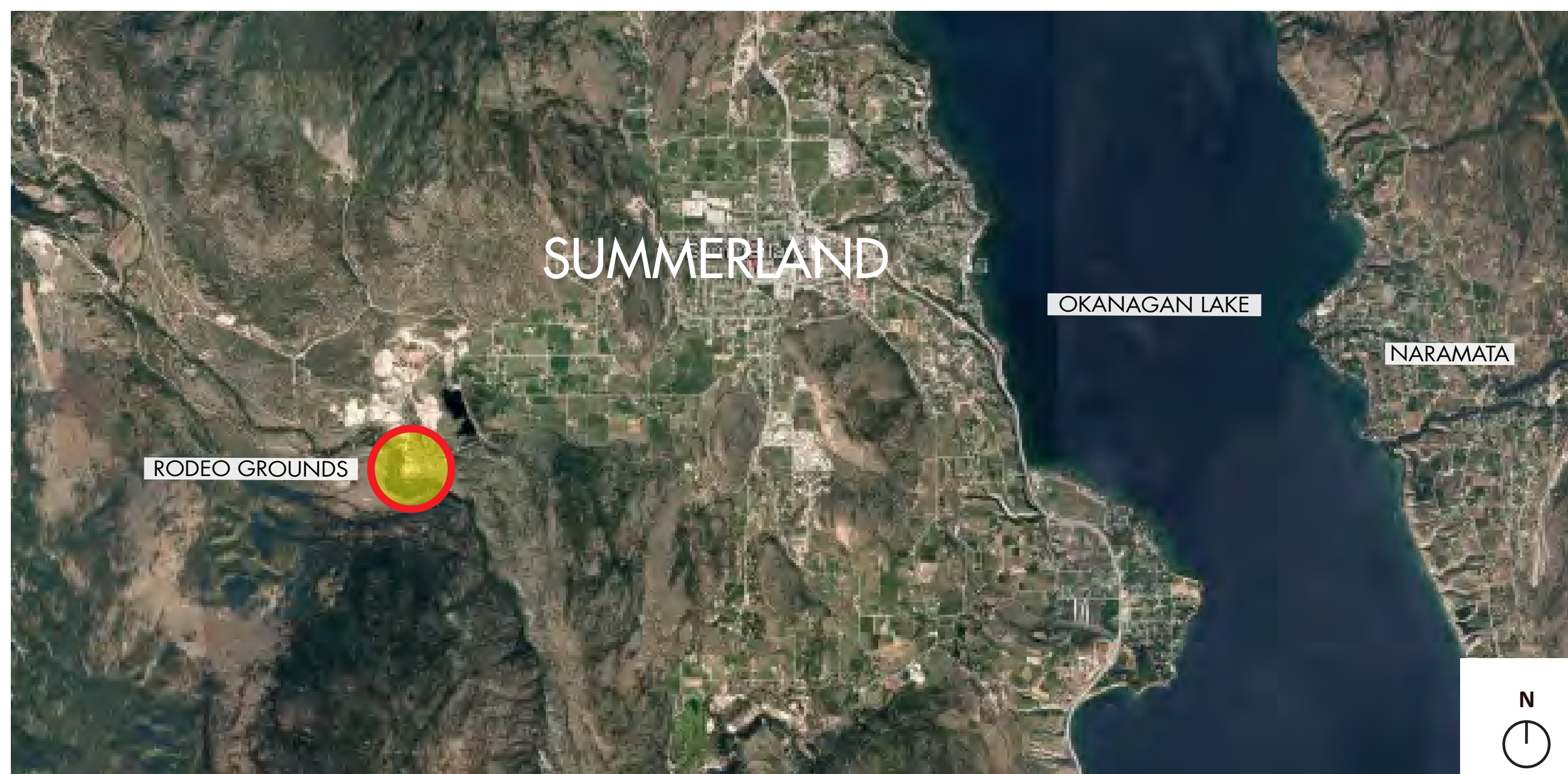
SUMMERLAND RODEO GROUNDS PUBLIC OPEN HOUSE

SITE CONTEXT

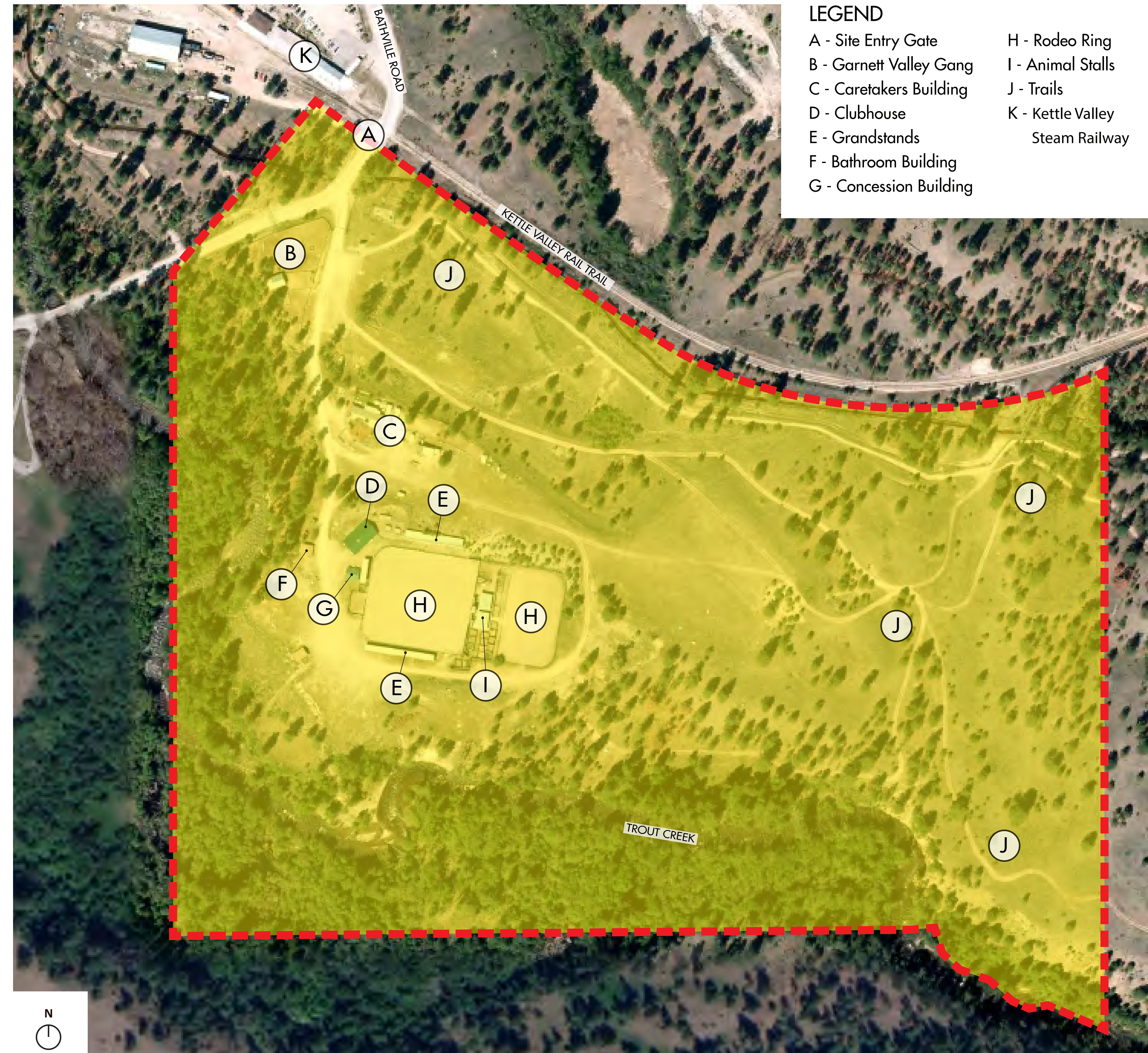
The District of Summerland makes up part of the Southern Interior area of the larger Thompson Okanagan region.

While the town of Summerland sits on the shores of Okanagan Lake and has embraced its lakefront community and spirit, the Rodeo Grounds is situated in an iconic landscape and historical setting within the rolling grassland and hills west of town. A 10 minute drive west from downtown, the grounds are a gateway to outdoor recreation along the Kettle Valley Rail Train and Trout Creek, as well as serving as a main trailhead for both the Trans Canada Trail and Conkle Mountain trail network.

The Summerland Rodeo Grounds spans over 73.76 acres of community parkland. It has two riding rings, grandstands, animal stalls, a seasonal concession cook shack, seasonal washroom building with showers, a community clubhouse



Site Location



Rodeo Grounds Existing Boundary

LEGEND

- | | |
|-------------------------|---------------------------------|
| A - Site Entry Gate | H - Rodeo Ring |
| B - Garnett Valley Gang | I - Animal Stalls |
| C - Caretakers Building | J - Trails |
| D - Clubhouse | K - Kettle Valley Steam Railway |
| E - Grandstands | |
| F - Bathroom Building | |
| G - Concession Building | |

SUMMERLAND RODEO GROUNDS PUBLIC OPEN HOUSE

EXISTING SITE



SUMMERLAND RODEO GROUNDS PUBLIC OPEN HOUSE

ENVIRONMENTALLY SENSITIVE AREAS



ENVIRONMENTAL ASSESSMENT SUMMERLAND RODEO GROUNDS SUMMERLAND, BC

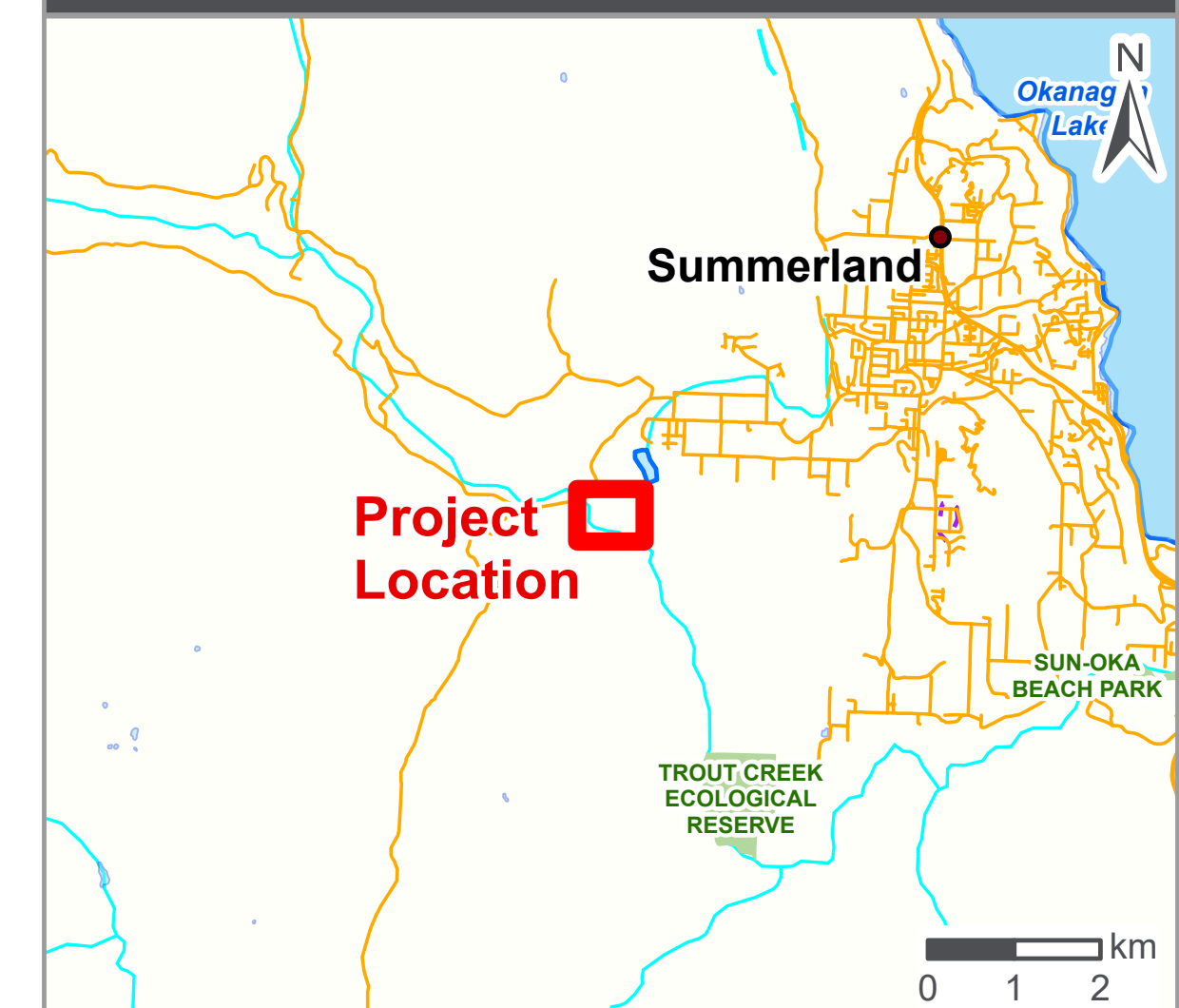
Legend

- 20m TRIM Contour Lines
 - Fresh Water Atlas Streams
 - Digital Road Atlas Roads
 - PMBC Legal Parcels
- ESA Ranking**
- ESA 1 - High
 - ESA 2 - Moderate
 - ESA 3 - Low
 - ESA 4 - Not Sensitive

References

Aerial Imagery: City of Summerland, 5/9/2020

LOCATION MAP



1:2,500



Project No.: 221114

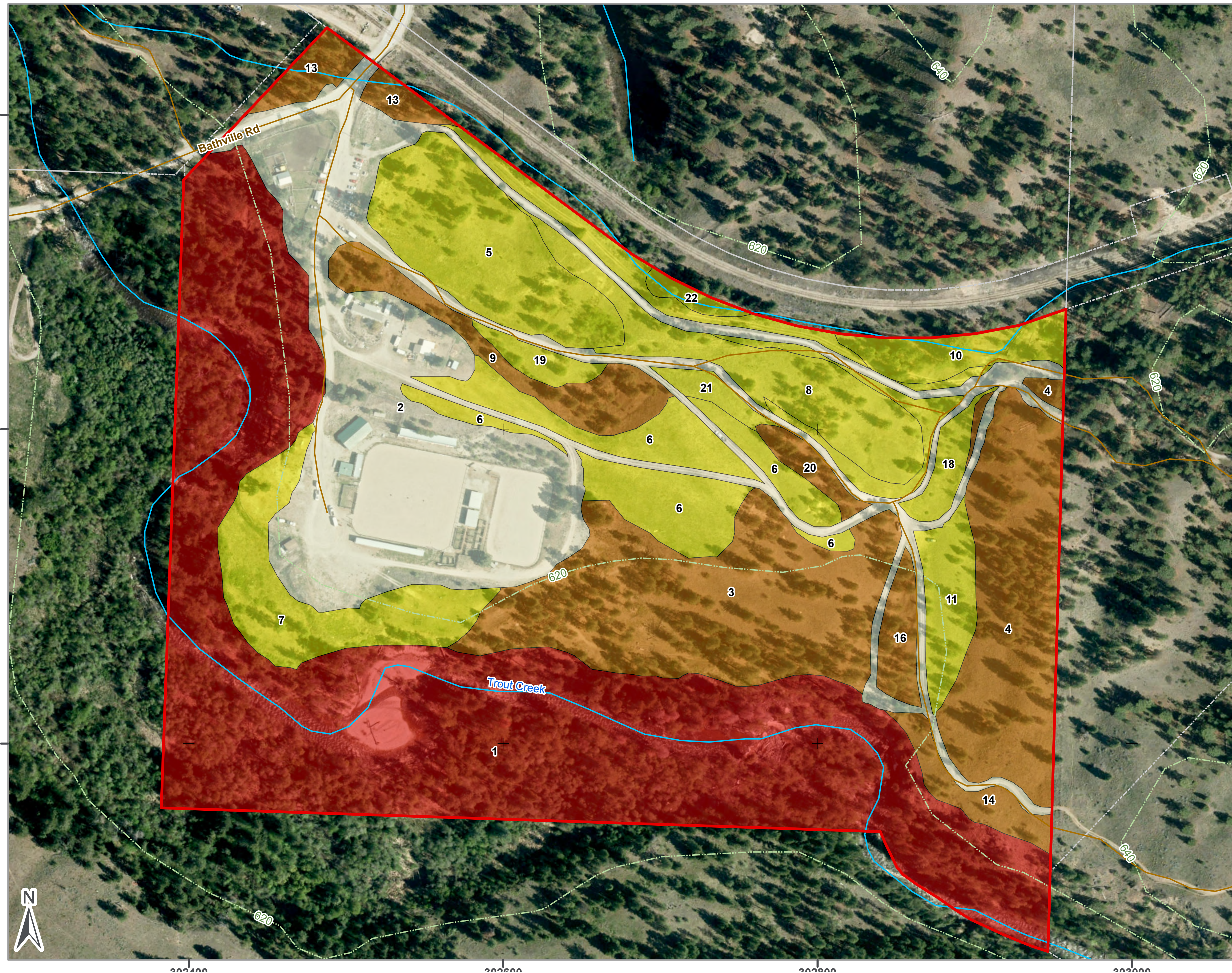
Date: 2022/11/22

Client: City of Summerland

Drawn: SC Check:

NAD 1983 UTM Zone 11N

Figure 1.0



SUMMERLAND RODEO GROUNDS PUBLIC OPEN HOUSE

RIPARIAN AREAS REGULATION SETBACK ASSESSMENT



ENVIRONMENTAL ASSESSMENT SUMMERLAND RODEO GROUNDS SUMMERLAND, BC

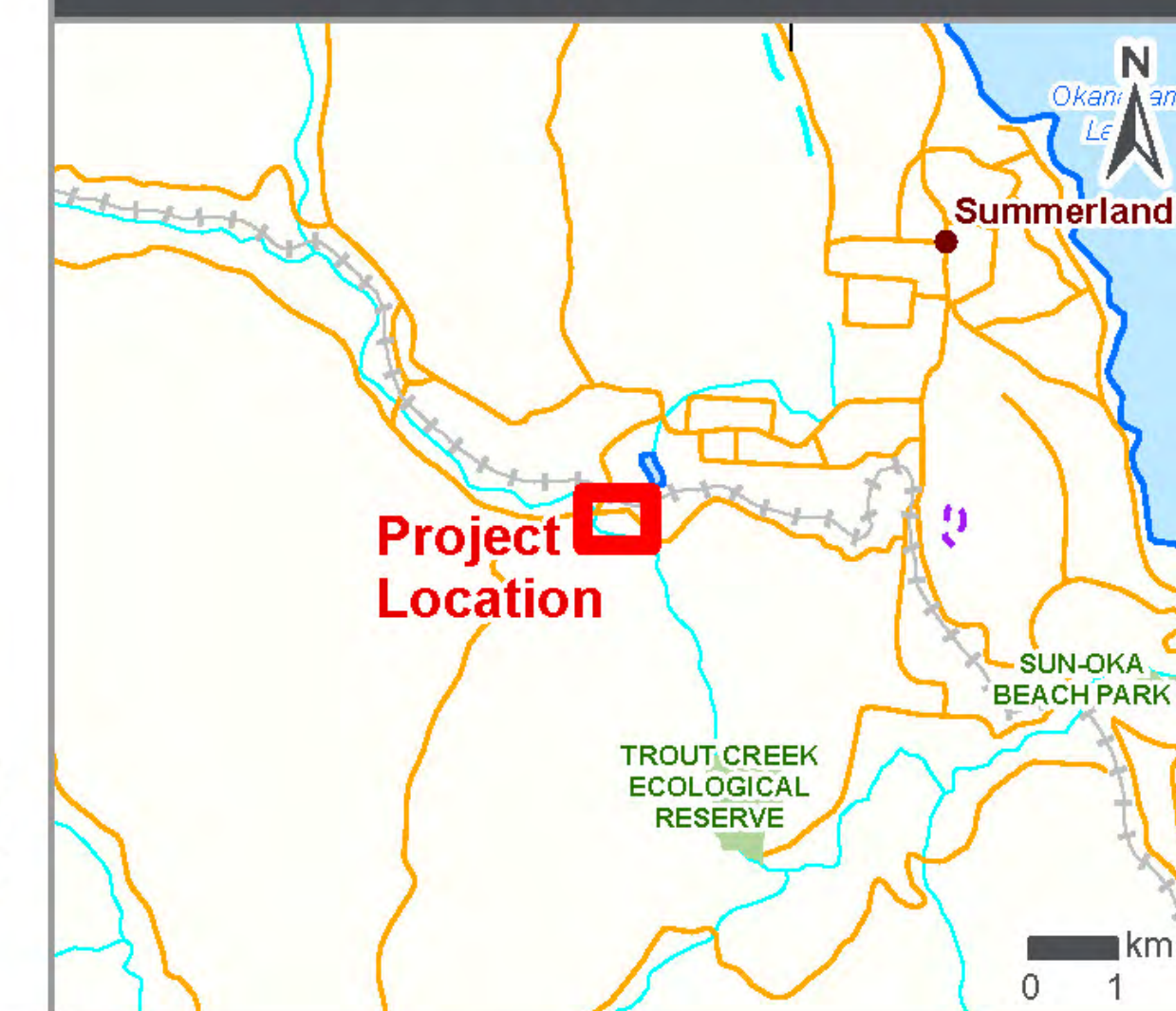
Legend

- RAPR Trigger (30m)
- Top of Bank
- - - 20m TRIM Contour Lines
- Fresh Water Atlas Streams
- Digital Road Atlas Roads
- Property Boundary
- PMBC Legal Parcels

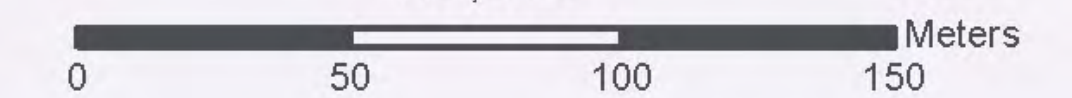
References

Aerial Imagery: City of Summerland, 5/9/2020

LOCATION MAP



1:2,500



Project No.: 221114

Date: 2022/11/22

Client: City of Summerland

Drawn: SC Check:

NAD 1983 UTM Zone 11N

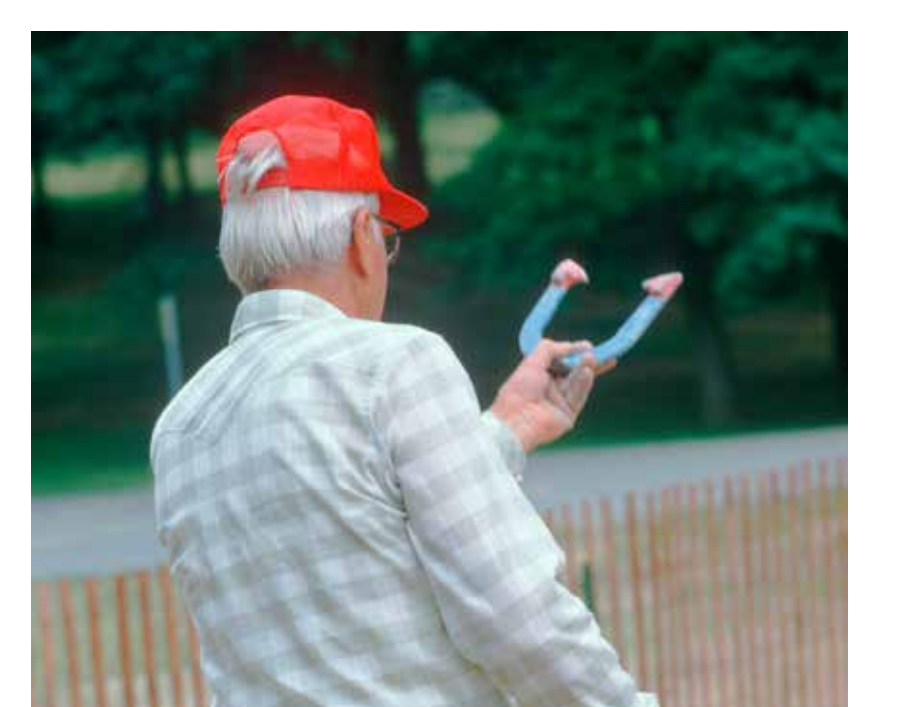
Figure 2.0



SUMMERLAND RODEO GROUNDS PUBLIC OPEN HOUSE

Place a dot...

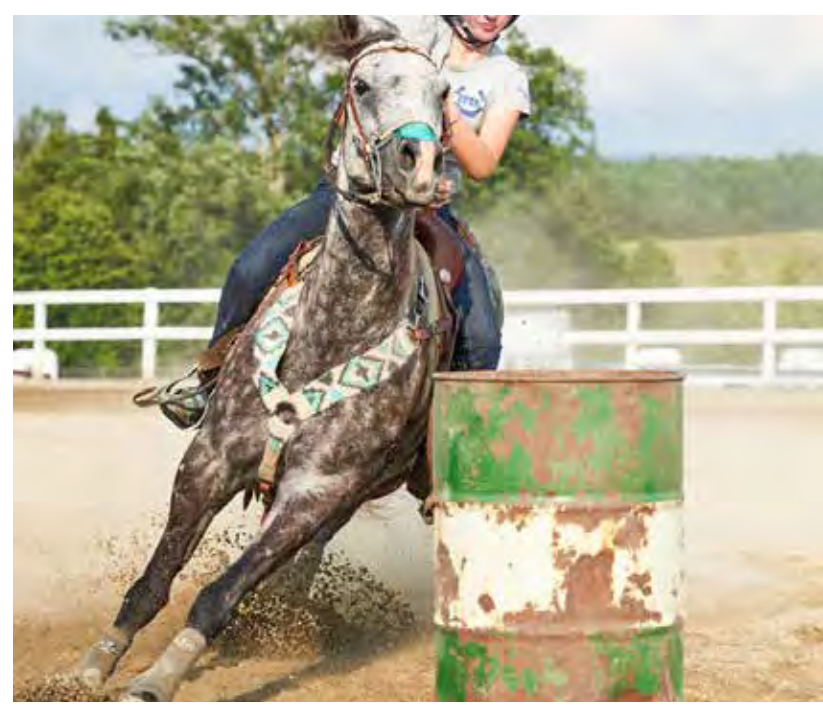
Let us know what you would like to see in the new Master Plan. Place a dot on all the activities and amenities that you think we should incorporate!



SUMMERLAND RODEO GROUNDS PUBLIC OPEN HOUSE

Place a dot...

Let us know what you would like to see in the new Master Plan. Place a dot on all the activities and amenities that you think we should incorporate!



What did we miss?

SUMMERLAND RODEO GROUNDS PUBLIC OPEN HOUSE

THANK YOU

We want to thank you for taking the time today to share your stories and ideas on what the Summerland Rodeo Grounds is and what it can become. Your input is invaluable in this process and we are looking forward to taking this knowledge to the next phase of design development. If you haven't already, please fill out the survey here, on-line or with your smartphone.

Please follow along in the process and check for updates on the District of Summerlands website and at www.summerland.ca/rodeo-grounds-master-plan.

If you have any questions, comments or concerns, please feel free to reach out as well to: **Lori Mullin**

Director of Community Services
lmullin@summerland.ca or 250-404-0447.



Community Survey QR-Code:



SUMMERLAND RODEO GROUNDS PUBLIC OPEN HOUSE

ADDITIONAL COMMENTS

Please use the 'sticky-notes' provided to write any additional comments, questions or concerns, and place in the box below:

A large, empty light blue rectangular area intended for users to write additional comments, questions, or concerns.