

Building an affordable community is one of Summerland Council’s priorities and most of our decisions consider the impact on residents’ living expenses. With housing the largest expense for most people, the District is helping to ensure there is a diversity of housing supply and creating greater market certainty through amendments to bylaws and the Official Community Plan. We’ve also worked with BC Housing to support the two large social housing projects currently under construction by providing grants in lieu of development cost charges, off-site capital upgrades, permit fees, and landfill fees.

While Council can’t do much about rising fuel prices, we understand transportation is a significant expense for people and therefore make it free to park throughout Summerland and free for residents to ride the Route 30 bus to Penticton. Free parking and free bus fare won’t necessarily pull people out of poverty but it does keep money in pockets and ensures essential services remain accessible.

With the relationship between healthiness and poverty well documented, much effort goes into maintaining municipal parks and trails, and the District subsidizes public use of its recreation facilities and community programs. Local non-profit groups also are often given grants-in-aid or permissive tax exemptions. If organizations like the Food Bank, RECOPE, NeighbourLink, Museum and Arts Council didn’t provide their services, then responsibility would likely fall to the District. Given that volunteer groups can operate more economically than the municipality, grants and tax exemptions make financial sense and are a good deal for the taxpayer.

Taxation, of course, is an expense endured by everyone and, in recognition, Council follows a philosophy of ensuring that Summerland has amongst the lowest residential property taxes in the region. This year, a local home assessed at \$850, 000 will pay \$2, 251 in municipal property taxes – less than a property of the same value in Penticton, Peachland, Kelowna or Vernon.

~ Mayor Doug Holmes

Ongoing Projects

Victoria Road Watermain upgrade and Multi-use Pathway

Construction work on Victoria Road and Dale Meadows Road is nearing completion. A reminder that this project included water system separation upgrades from Dale Meadows Sports Complex to the Victoria Road/Prairie Valley Road oval about, pedestrian safety improvements along Victoria Road and Dale Meadows Road and asphalt resurfacing. Thank you for your patience during construction!



Wastewater Treatment Plant Primary Clarifier

The primary clarifier project has been nominally completed and has been in use within the wastewater treatment process since April 1, with only a few minor deficiency repairs remaining. The next step in the project is removal of the fibreglass roof from the original primary clarifier to allow for cleaning and inspection by the District’s consultants, informing the required next steps for eventual remediation.

Residential Watering Restrictions

Summerland is in Stage 1 watering restrictions unless otherwise posted.

Even Numbered Addresses

If your house number ends in 0, 2, 4, 6, or 8, you may water on Sundays, Tuesdays, and Fridays.

Odd Numbered Addresses

If your house number ends in 1, 3, 5, 7, or 9, you may water on Saturdays, Mondays, and Thursdays.



Reminders: Upcoming 2026 Election

The next general local election is on **October 17, 2026**.

Are you eligible to vote in the 2026 General Local Election?

Check [Elections BC](#) for details on who can vote and to:

- ~ Register to vote if you are 18 years or older
- ~ Update your voter information such as your residential or mailing address
- ~ Register for the List of Future Voters if you are 16 or 17 years old

For details on **voter eligibility**, voting opportunities and dates, identification requirements, and voting locations, click [here](#).

Interested in running for office?

Save the date for the candidate information session!

When: Wednesday, June 17, 2026

5:30—7:30 PM (Presentation at 5:45 PM)

Where: George Ryga Arts & Cultural Centre (9525 Wharton Street)

To learn more about **candidate eligibility**, visit [Elections BC](#).

To view the list of key dates, visit summerland.ca/your-city-hall/elections/2026-general-local-elections.

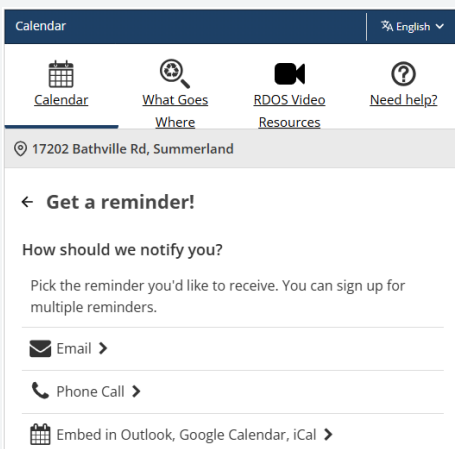
Chief Election Officer phone 250-404-4037 or email elections@summerland.ca.

2026/2027 Curbside Collection Calendar

The 2026/2027 Curbside Collection Calendar will be available online under Curbside Collection at www.summerland.ca/solidwaste or you may pick up a copy at Municipal Hall or at Works & Infrastructure, 9215 Cedar Avenue.

Residents can also visit the Curbside Collection page at www.summerland.ca to

sign up for weekly reminders by email, phone call or calendar events. Scroll down the page and enter your address to start the sign-up process.



Invasive Plant Alert—Burdock

Burdock is an invasive biennial plant introduced from Eurasia and unfortunately it is common in Summerland.

The leaves of first year plants resemble rhubarb. It reaches heights of 1 – 3 metres with purple flowers from July to September found in short-stalked clusters along the stems. Mature plants have prickly burs that stick to clothing or animals. Burdock’s clinging properties provide an excellent mechanism for seed dispersal. The burs readily attach to livestock and wildlife. Birds and bats are stuck to seedheads and cannot fly away. If you have this invasive plant on your property, take action. Repeated hand-pulling, digging, above-ground cutting of bolted plants and chemical treatments can help control outbreaks. For more information go to www.oiso.ca/species/burdock/.



New Sign Honouring the Legacy of Living Memorial

Athletic Park

On April 18, the District marked the unveiling of a new sign at Living Memorial Athletic Park, recognizing its rich history and significance to the community.



Established in 1948 as a living memorial to honour local war veterans, the park was created through the dedication and fundraising efforts of Summerland residents. For generations, it has brought together youth sports, community spirit, and remembrance.

The new sign helps share this important story and preserve the park's legacy for years to come. Residents are invited to visit, reflect, and enjoy this meaningful part of Summerland's heritage.

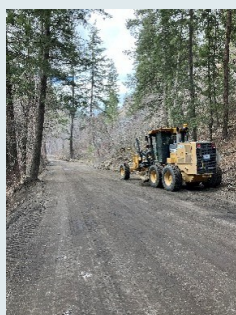
Summerland Operations Update

As summer gets underway, the Works Division will be busy completing a wide range of maintenance, operational, and infrastructure activities throughout the community. Our crews work year-round to help maintain essential services and municipal infrastructure that residents rely on every day.

Ongoing maintenance activities include:

- Cemetery maintenance
- Municipal facility maintenance
- Road and sidewalk maintenance
- Water distribution system maintenance
- Sewer system maintenance
- Fleet and equipment maintenance

Works staff also provide operational and construction support for a variety of municipal capital projects and interdepartmental initiatives throughout the year.



New Peach Orchard Beach Playground

The new Peach Orchard Beach playground officially opened on April 15 and is now ready for the community to enjoy.

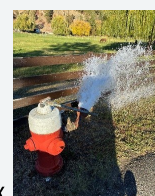
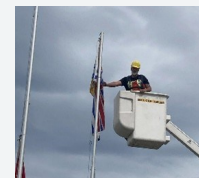


Designed for children of all ages, the playground features a treehouse structure, sandcastle play area, zipline, musical elements, sensory panels, and a variety of climbers, slides, and balance equipment. An accessible rubber pathway connects the north-end playground to the transfer station and Raft Rider. We invite residents and visitors to check out this exciting new addition to our waterfront parks.

Summer Maintenance Activities

Beginning in June and continuing throughout the summer months, residents may notice crews completing several seasonal maintenance programs, including:

- Roadside brushing and vegetation management (completed until conditions become too dry or unsafe due to wildfire risk)
- Invasive tree and vegetation removal
- Sewer main flushing and cleaning programs
- Fire hydrant inspections, maintenance, and flushing
- Asphalt repairs, grading and road patching
- Street sweeping and boulevard maintenance
- Drainage and catch basin inspections
- Sign maintenance and replacement
- Water system repairs
- Storm system maintenance and installs
- Sidewalk and curb maintenance



These programs are important in helping maintain safe roads, reliable infrastructure, wildfire mitigation efforts, and essential public services throughout the community.

We appreciate the public's patience and cooperation around work zones and maintenance activities as crews continue working to keep municipal infrastructure safe, reliable, and well maintained throughout the summer season.

Save Energy On Home Cooling

Keep windows, curtains and blinds closed. In the heat of the day, cover your windows to prevent the hot sun from heating up your house. Once the sun goes down, open them to let in the cooler air.

Use a fan. Fans cool you by creating a breeze, but you can turn them off if no one's in the room. You can also set your ceiling fan to summer mode (counter-clockwise as you look up at it) to move the air downward to create a wind chill effect.

Cool only the rooms you're using. If using an air conditioner, cool only the rooms you're actively using.

Program your thermostat. Aim to be comfortable, not chilly. The recommended temperature during hotter months is between 25 and 27°C.

Book Your FireSmart Home Assessment today

Please visit FireSmart BC at firesmartbc.ca to book a free FireSmart Home Assessment and to learn how to protect your home from potential wildfire risk. For additional information about the District's FireSmart Program, please contact: ryan@summerlandfs.ca.

Giant's Head Run Registration

There is still time to register for the 42nd annual Giant's Head Run. Register online or in person at the Summerland Aquatic Centre. The Run takes place Saturday, June 6 at 9:00 AM. To register, visit www.summerland.ca/ghr

Keep up to date

The District posts community updates to our website and Facebook account. Council meetings can be viewed on the District's YouTube channel www.youtube.com/c/DistrictofSummerland

Sign up for the monthly newsletter online:

www.summerland.ca/your-city-hall/newsletter

Check out the Mayor's column available on the District's website:

www.summerland.ca/your-city-hall/mayor-council/mayor-s-minute

Municipal Hall hours of operation: Tuesday - Friday from 8:15 AM to 5:00 PM. Closed Mondays and Statutory Holidays.

SCHOOL'S OUT

FOAM PARTY!

THURSDAY, JUNE 25

1:00 - 3:30 PM

TICKETS ON SALE AT THE SUMMERLAND AQUATIC & FITNESS CENTRE

PRICING

EARLY BIRD (UNTIL JUNE 12) \$7.50

AFTER JUNE 12 \$10

PLEASE NOTE: Children under the age of 7 require a responsible adult present in the pool with them.

DISTRICT OF SUMMERLAND