

# Summerland Off-Leash Dog Park Planning Project

Phase 2: August – December 2020

Parks & Recreation Advisory Committee

Lesley Dyck, 24 November 2020



# Questions for discussion:

1. Community engagement
  - Has there been sufficient engagement?
  - Is the feedback from the public clear?
2. Priority setting
  - Should the downtown/central community be prioritized?
  - Should other options be explored in addition to Living Memorial?
  - Should other options include Dale Meadows and Memorial Park?
3. Living Memorial
  - What are the preferred design (e.g. size and fence line) and mitigation strategies (e.g. displacement of baseball)?
4. Other sites for consideration
  - What are the factors in favour?
  - What are the factors against?



# Community Engagement

## Phase 1 (September 2019 – January 2020)

- Interviews with stakeholder groups / input from Parks & Rec Committee / input from Council
- Open House to review proposed options and collect feedback
- Report with recommendations:
  - build a dog park at Peach Orchard Beach Park
  - further explore a potential partnership with Julia Street Community Church
  - consider as part of master planning for Rodeo Grounds and Memorial Park

Council rejected the recommendation for Peach Orchard Beach Park due to the expected impact on the local community and asked staff to consult with the community around 5 sites: 2 churches, Living Memorial, Powell Beach and the Summerland Rodeo Grounds.



# Community Engagement

## Phase 2 (August – December 2020)

- Draft background documents: 1) What is a dog park? 2) Proposed off-leash sites 3) Impact and mitigation options
- Stakeholder group consultations and revision of background documents
- Online open house (Q&A), 2 x 1 hour each (22 participants)
- Website – list of FAQs and correspondence received (43 posted anonymously, plus 3 from stakeholder groups)
- Public survey – online and paper (308 completed surveys)



# Summary of Feedback

## Correspondence

- 8 in favour of one of the options
- 2 advocacy for small dogs and small dog safety
- 6 against any off-leash dog park
- 5 against Rodeo Grounds or Living Memorial
- 24 against Powell Beach
- 22 with suggestions for other sites



# Survey Response

- 308 completed surveys (3.2% of population age 20 and older)
- Results compared by area, not dog ownership (73% own a dog)

	Trout Creek n=116	Central Area n=85	Outlying Areas n=107
% of respondents	37.7%	27.6%	34.7%
Over 10 years in Summerland	67%	70%	62%
Age 50 or older	57%	60%	45%
Majority female respondents	52%	67%	69%
Access to a vehicle	98%	95%	97%
Own a pet	79%	89%	95%
Own a dog	62%	78%	80%
Own a service animal	0	4%	3%



# Neighbourhoods

## Central Area:

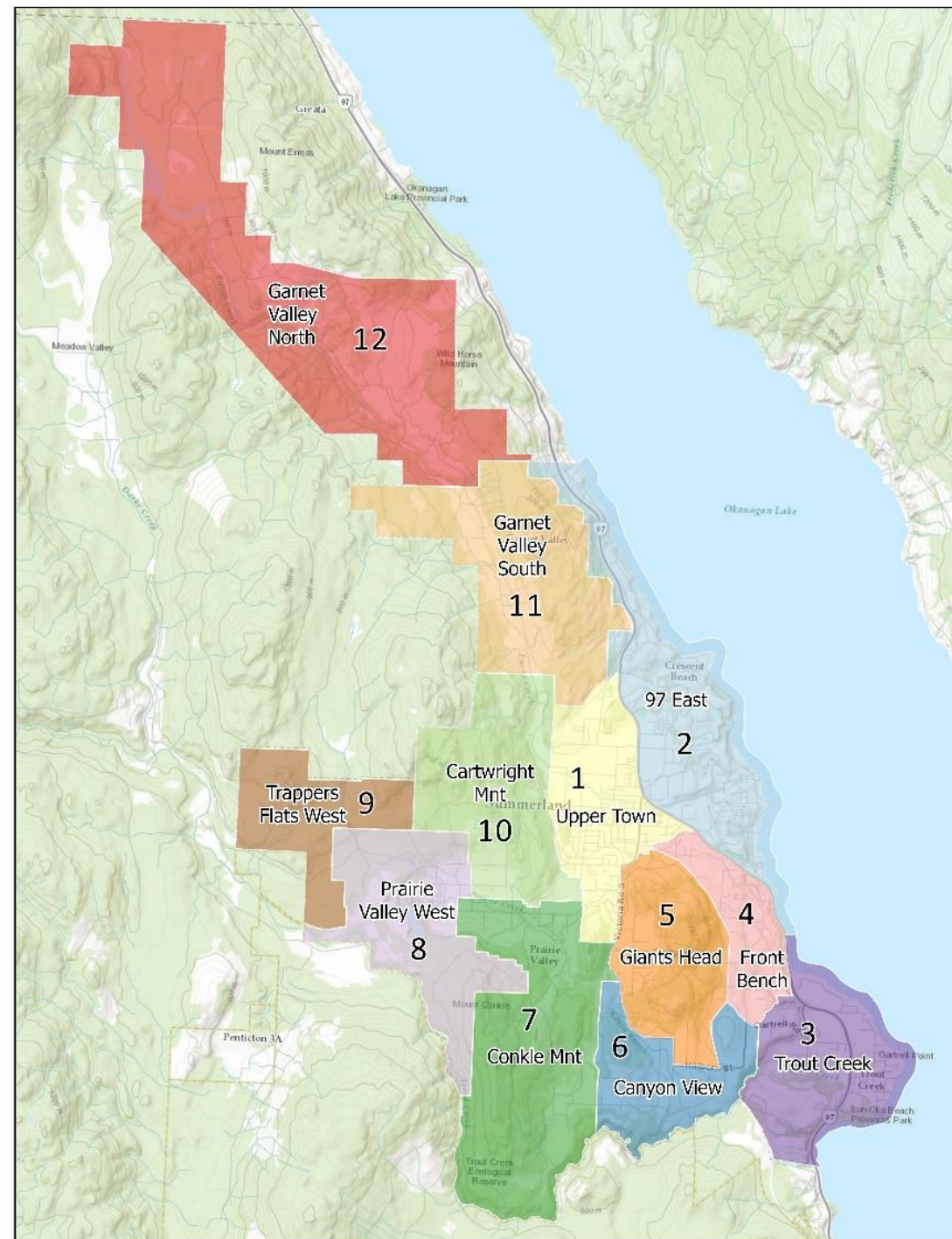
- 1 – Upper Town
- 2 – 97 East

## Trout Creek:

- 3 – Trout Creek

## Outlying Areas:

- 4 – Front Bench
- 5 – Giants Head
- 6 – Canyon View
- 7 – Conkle Mountain
- 8 – Prairie Valley West
- 9 – Trappers Flats West
- 10 – Cartwright Mountain
- 11 – Garnet Valley South
- 12 – Garnet Valley North
- I don't live in Summerland



# Main Messages

- No clear overall 'best site'
- Living Memorial most likely to be used (43% by all, 58% by Central Area)
- Differences in opinion not likely related to dog ownership (73% own a dog)
- Top concerns are: 1) reluctance to take away recreational opportunities, and 2) ensure cost effectiveness
- Competing visions about the purpose of a fenced off-leash park





# Central Area Sites - comparison

1. Living Memorial
2. Dale Meadows
3. Memorial Park
4. Fosbery Highway Easement

Other suggested sites – previously reviewed and rejected/declined:

- Horse Beach (Lakeshore Drive)
- Turner Street Park
- Old shale site behind the municipal yard
- Old skateboard park
- Area around the water treatment plan
- Summerland Peach Orchard Campground
- Peach Orchard Beach Park
- Community churches

New suggestions:

- District owned – Solar Panel Park
- Purchase or lease – Old RCMP land, school fields, Cedar Ave. beside Unisis School, lot at Prairie Valley and Cartwright, Hwy 97 near Steuart
- Partnership – Sun-Oka Beach Provincial Park



# Living Memorial

## Factors in favour

- Not close to residential area
- Safe and appealing for people and dogs
- Can start small and expand
- Basic infrastructure in place

## Factors against

- Takes away one diamond from minor baseball (Mosquito and Tadpole)
- Need to cross highway from downtown
- Potential parking issues during games/tournaments
- Gate opening/closing in winter





Living Memorial  
Baseball Park



Living Memorial  
Baseball Park

1.0 acres



1.5 acres



# Dale Meadows

## Factors in favour

- Not close to residential area
- Safe and appealing for people and dogs
- Can start small and expand
- Basic infrastructure in place
- No highway crossing
- No displacement of recreation users

## Factors against

- Large events in summer (4-6 tournaments plus dog show)
- Loss of some parking
- Need to reposition infrastructure to improve flow
- Gate opening/closing in winter (gate 1, not gate 2)





Dale Meadows



Dale Meadows

1.0 acres



0.82 acres





Dale Meadows – Dog Show





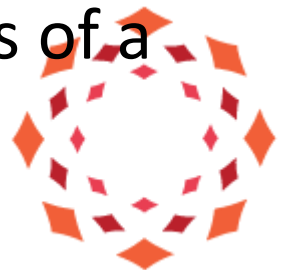
# Memorial Park

## Factors in favour

- Not close to residential area
- Safe and appealing for people and dogs
- Basic infrastructure in place
- No highway crossing

## Factors against

- May displace current users (fair grounds, horseshoe players)
- Potential parking issues during shopping hours
- Cannot be expanded
- May require additional grooming to meet quality expectations of a downtown park





Memorial Park  
0.54 Acres



# Fosbery Highway Easement

## Factors in favour

- Not close to residential area (2 houses nearby)
- Safe and appealing for people and dogs (although traffic noise)
- No displacement of recreation users
- Adequate street parking
- Infrastructure - irrigation
- Can start small and expand

## Factors against

- Need to cross highway from downtown
- Infrastructure - no washroom nearby
- Unknown - Permission from MOTI and coverage of liability





## Fosbery Highway Easement





0.25 acre



0.5 acre



0.2 acre

## Fosbery Highway Easement

Total = 0.95 acre

# Questions for discussion:

1. Community engagement
  - Has there been sufficient engagement?
  - Is the feedback from the public clear?
2. Priority setting
  - Should the downtown/central community be prioritized?
  - Should other options be explored in addition to Living Memorial?
  - Should other options include Dale Meadows and Memorial Park?
3. Living Memorial
  - What are the preferred design (e.g. size and fence line) and mitigation strategies (e.g. displacement of baseball)?
4. Other sites for consideration
  - What are the factors in favour?
  - What are the factors against?

