

Summerland Eco Village

Odessa Cohen, Sustainability Coordinator

Brad Dollevoet, Director of Development Services

February 28th 2024

Agenda

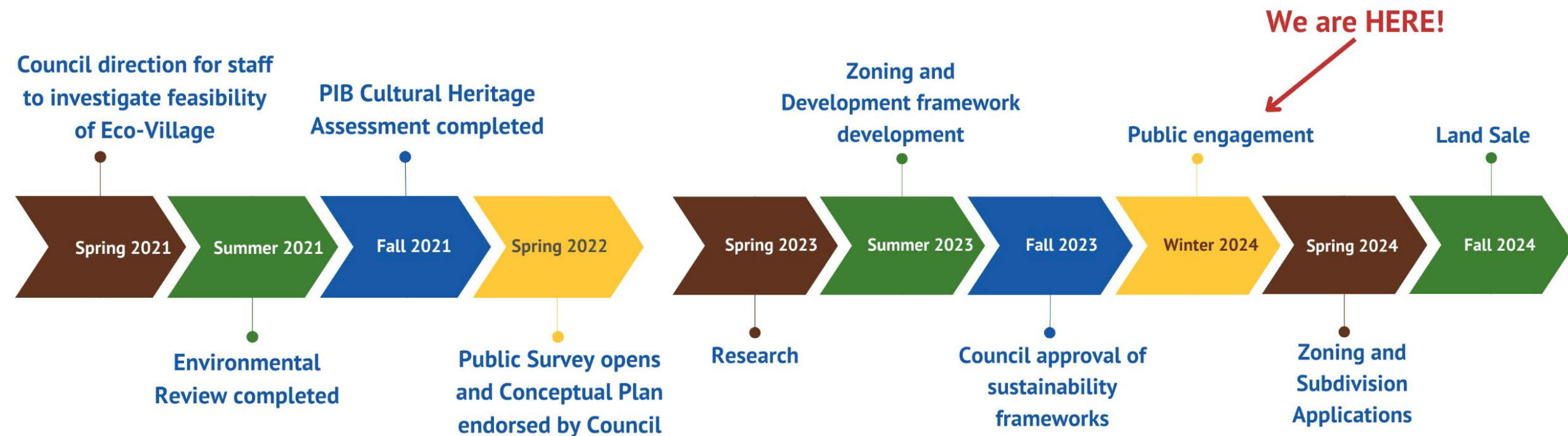
1. Project Background
2. Project Overview
3. Eco Village Zoning
4. Next Steps
5. Q&A





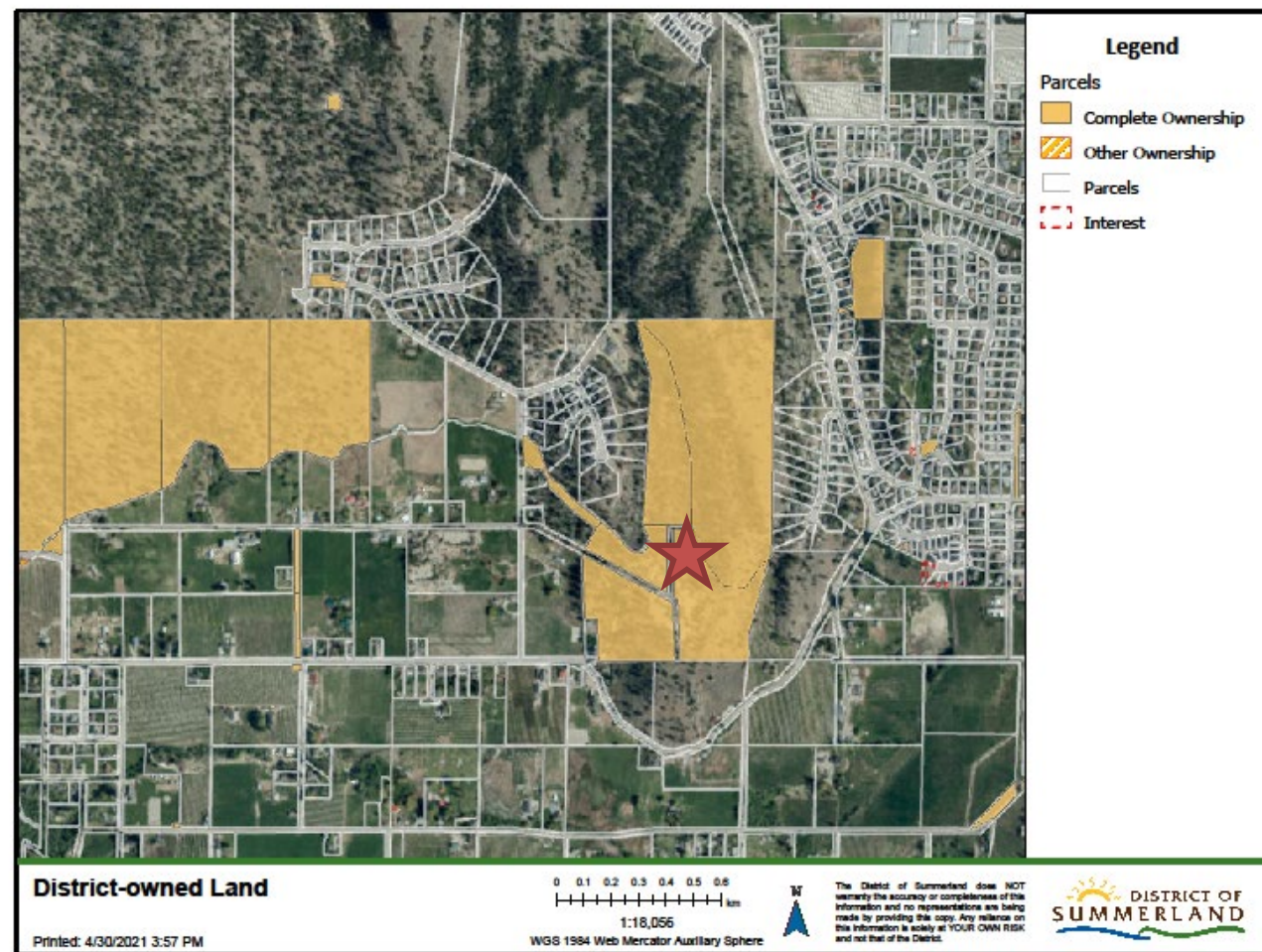
Project Background

Project Timeline



Site Location

- **Address:** 13500 Prairie Valley Road, 12591 Morrow Ave
- **Zone:** Institutional
- Within the Urban Growth Boundary



Site Conditions

- Undeveloped but surrounded by residential development
- Extensive trail system used by recreational users
- Summerland Energy Centre is at the toe of Cartwright Mountain
- Environmentally Sensitive Areas of ESA-1 and ESA-2



Site Assessments

- Environmental Impact Assessment
- Wildfire Hazard Report
- Penticton Indian Band Cultural Heritage Assessment
- Additional work support by engineering, planning, urban design and environmental expertise



Public Engagement

- **November 2021:** site visit and design charrette with neighboring landowners, staff, and Council and Mayor
- **March 2022:** public survey to obtain feedback on specific project details
- Used to inform the conceptual plan design, hone in on project values and support guidance of project development



Project Overview

Eco Village Concept Plan

- Developed with consultants to conceptualize the development of the site
- Used to support the Zoning and Design guideline
- Conceptualizes the projects values



Project Values

PROJECT VALUES

- Working with First Nations and Indigenous perspectives
- Protect, enhance, and restore natural features on-site
- Create a sense of community
- Build transportation connections to downtown and maintain and enhance existing trail networks
- Plan for climate impacts
- Provide mixed housing options

How will we ensure the project values are adhered to?

- LEED-Neighborhood Design and Envision Sustainability Frameworks
- Eco Village Conceptual Plan (2022)
- Zoning and Design Guidelines
- Environmentally Sensitive Development Permit (ESDP)

What Will The Eco-Village Provide?



Sewer Servicing



Housing



Climate Action



Recreational Trails



**Environmentally Sensitive Areas
(ESA) Protection**

- **66 acres** of District-owned land
- **Over 40 acres** of land to be rezoned to Parkland
- **14 acres** of developable land
- **100+** units of medium density housing

Eco Village Zoning

Zoning Approach

- Comprehensive Development (CD) Zone is being utilized
- Medium Density Residential Development
- Will be supported by the Design Guidelines and Conceptual Plan (2022)

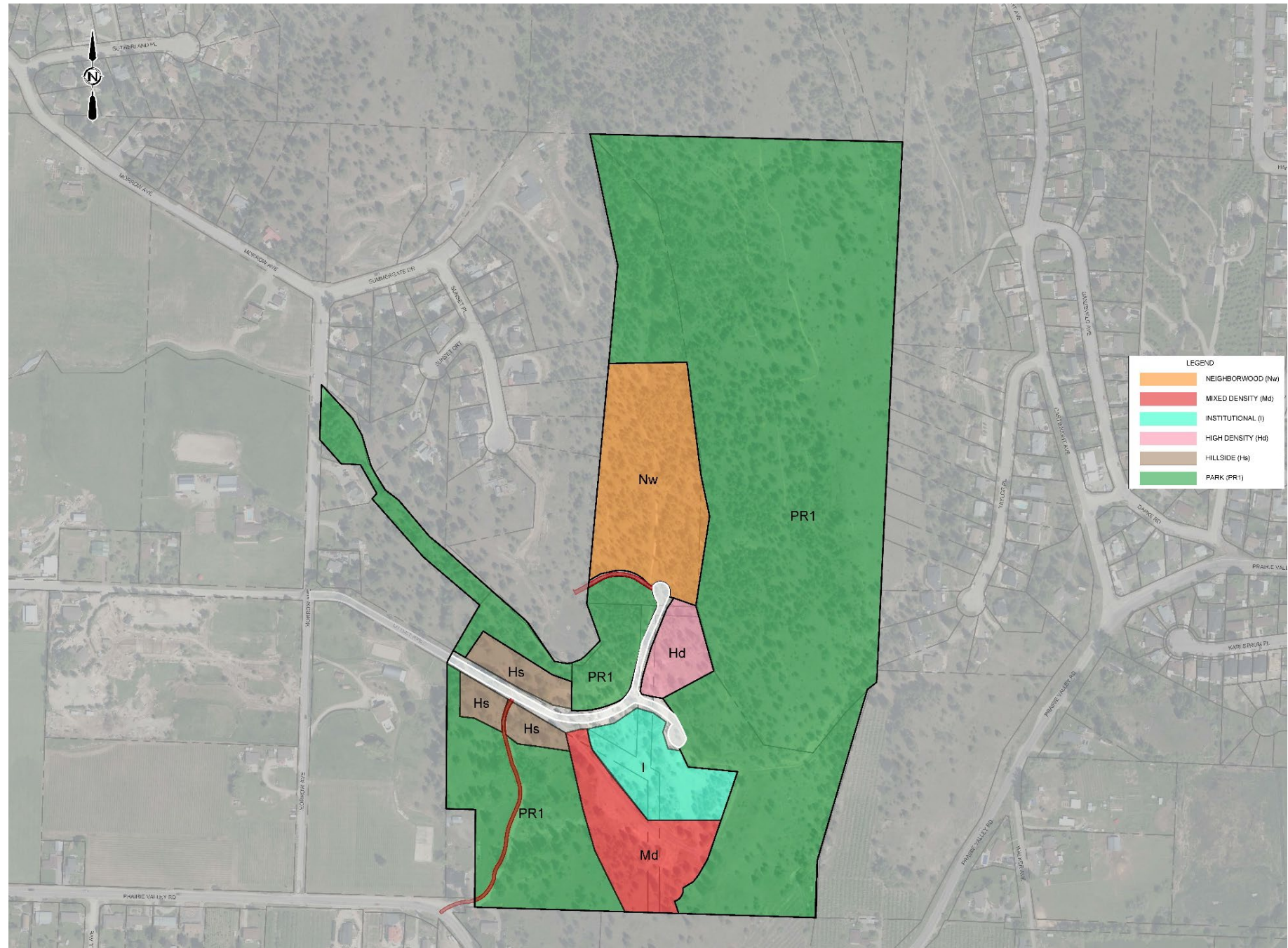


Zoning Approach

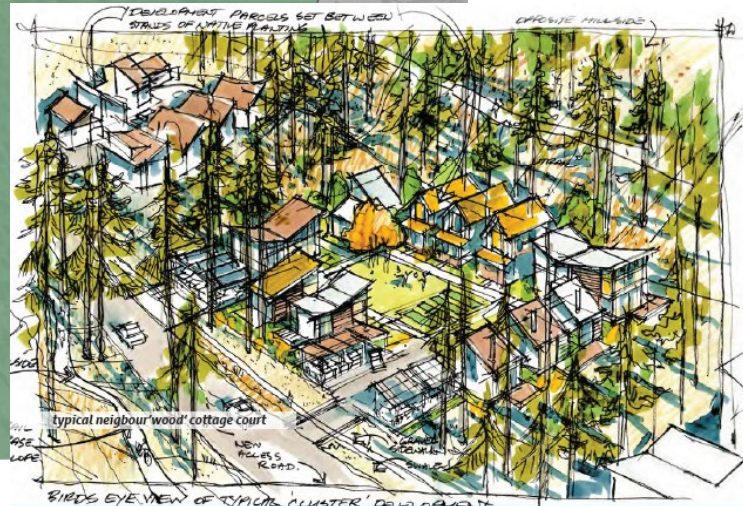
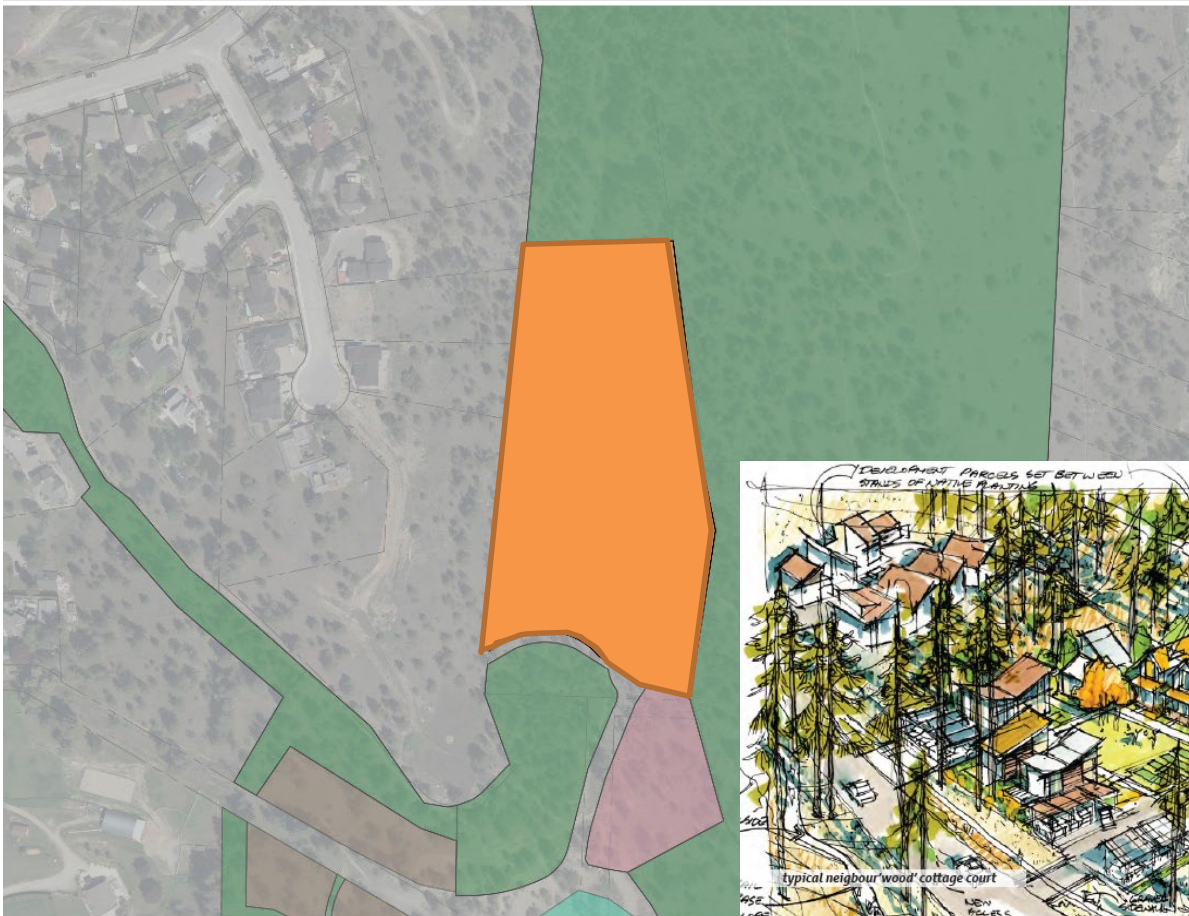
- Retention of natural landscape and trees
- Passive solar
- Limitations on residential parking (areas designated for visitors)
- Compact development style
- Limiting dwelling size (attainable)



Map 3: Zoning



NeighbourWood (Nw)



- ~ 2.45 ha (6.05 ac)
- Housing footprint: 150 sq m to 200 sq m
- Cottage style housing
- Clustered development style
- Integration of existing trail system
- Strata housing format

Hillside (Hs)



- ~0.85 ha (2.0 ac)
- Housing footprint: 125 sq m-175 sq m
- Townhouse development along Denike Road
- Up-slope and Down-slope development opportunities
- Retention of wildlife corridors

High Density (Hd)

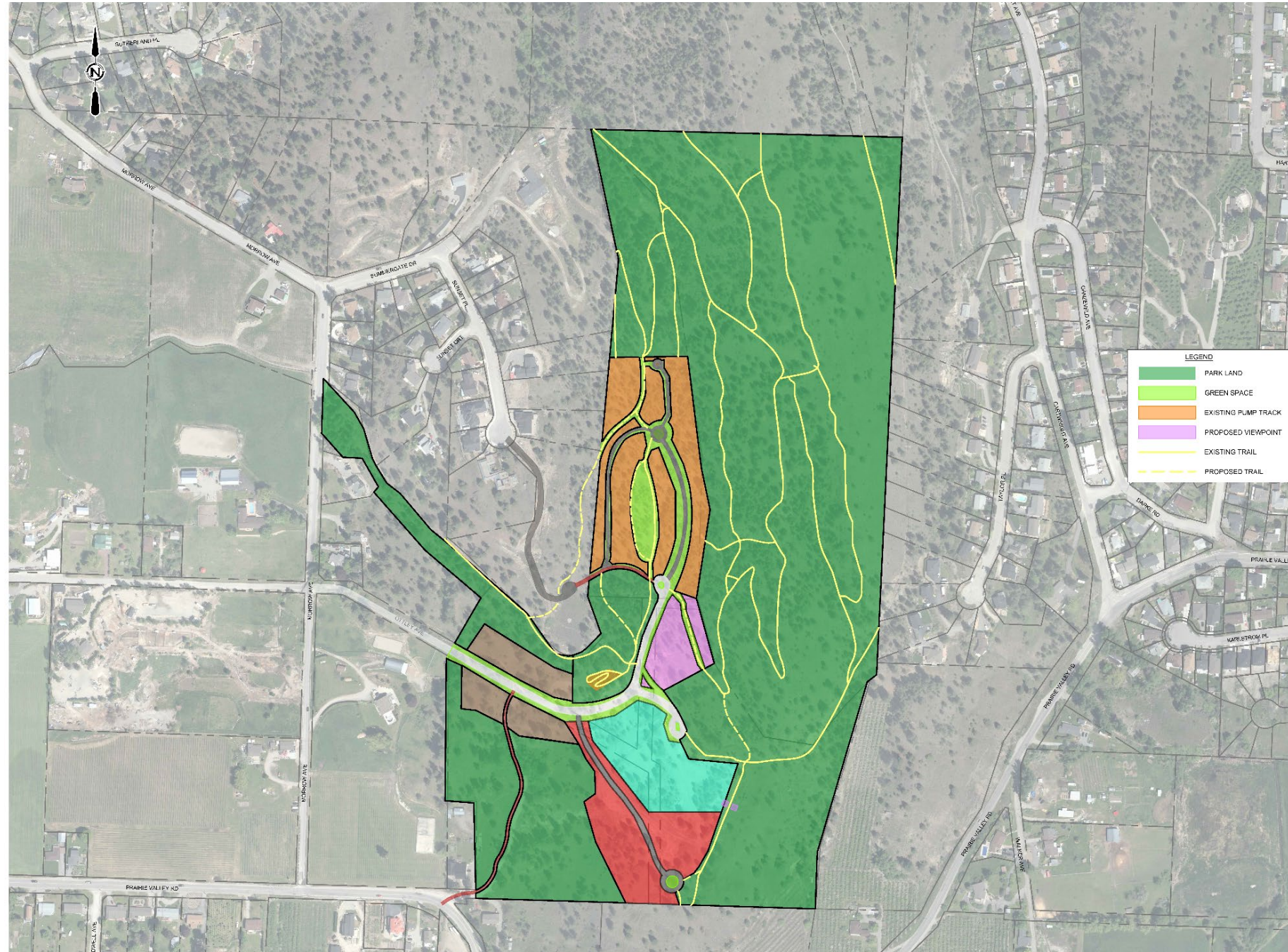


- ~0.30 ha (0.70 ac)
- Apartment buildings up to 4 storeys
- Underground parking
- Outdoor amenity space

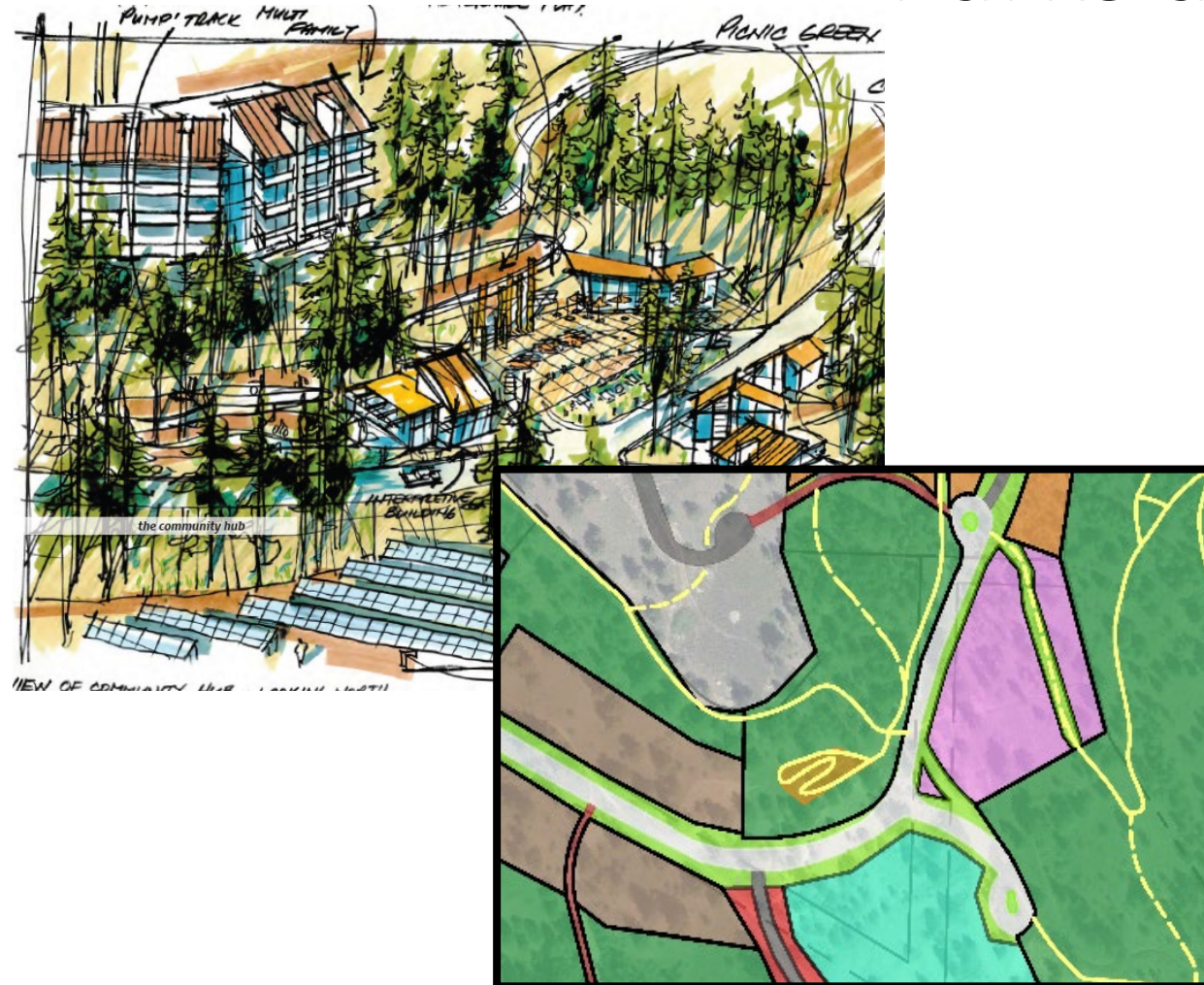
Mixed Density (Md)

- ~0.80 ha (2.0 ac)
- Mix of apartment (max 4 storeys) and townhouses
- Strata Housing format
- Trail network opportunities
- Above and below ground parking



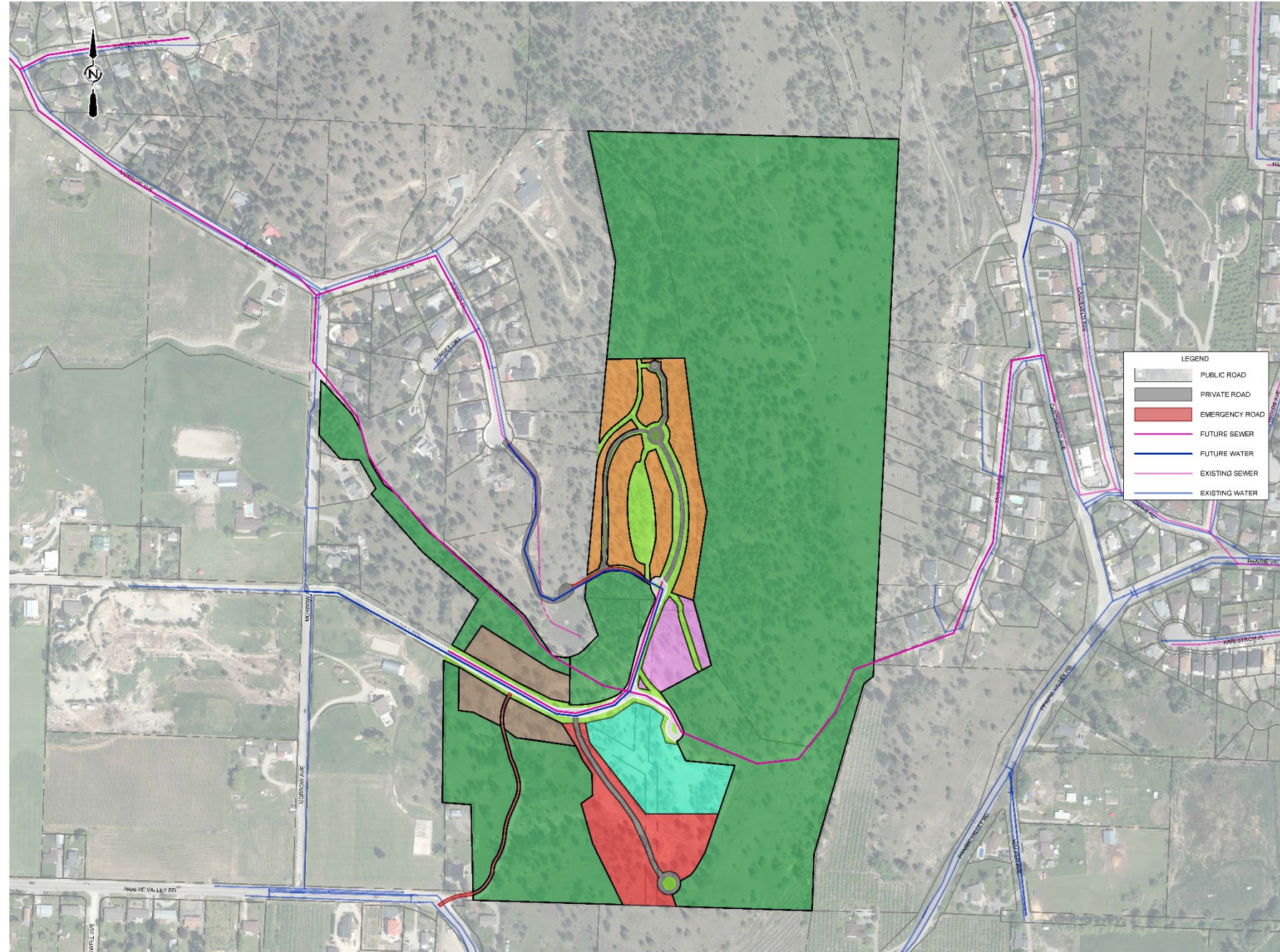


Parks and Trails



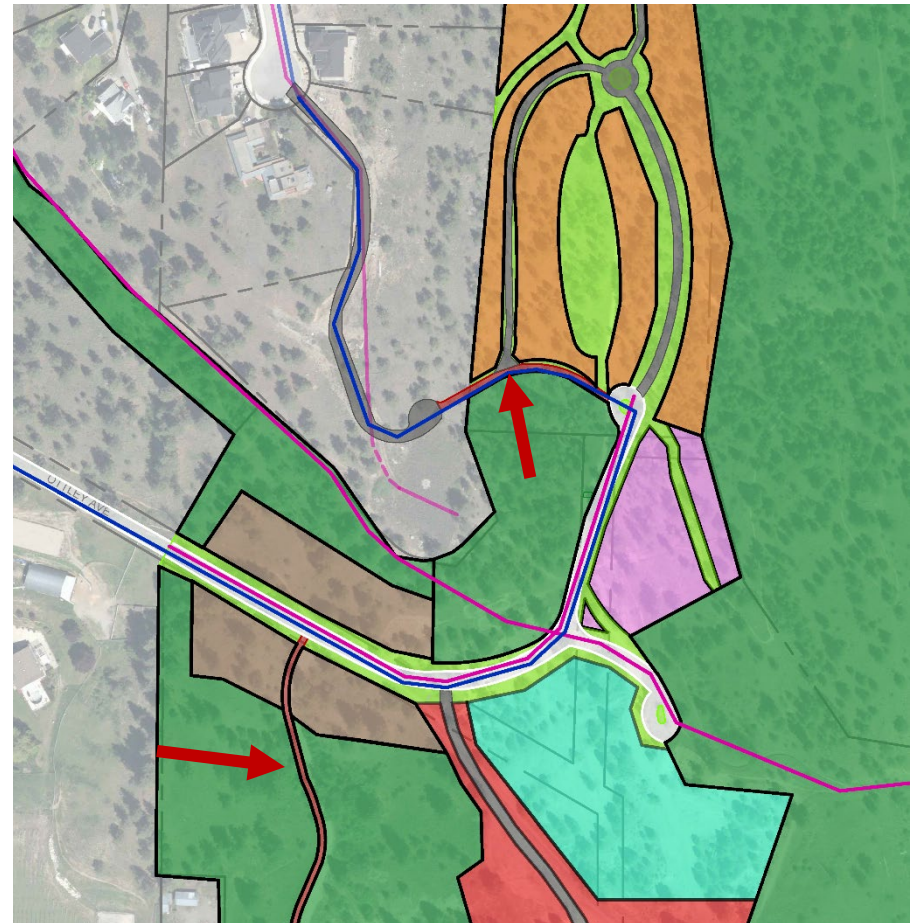
- Community Hub to be established for public gathering
- Maintenance of the pumptrack
- Stormwater management on-site
- Trailhead development
- Retention and re-development of trails across the site

Map 2: Infrastructure



Infrastructure

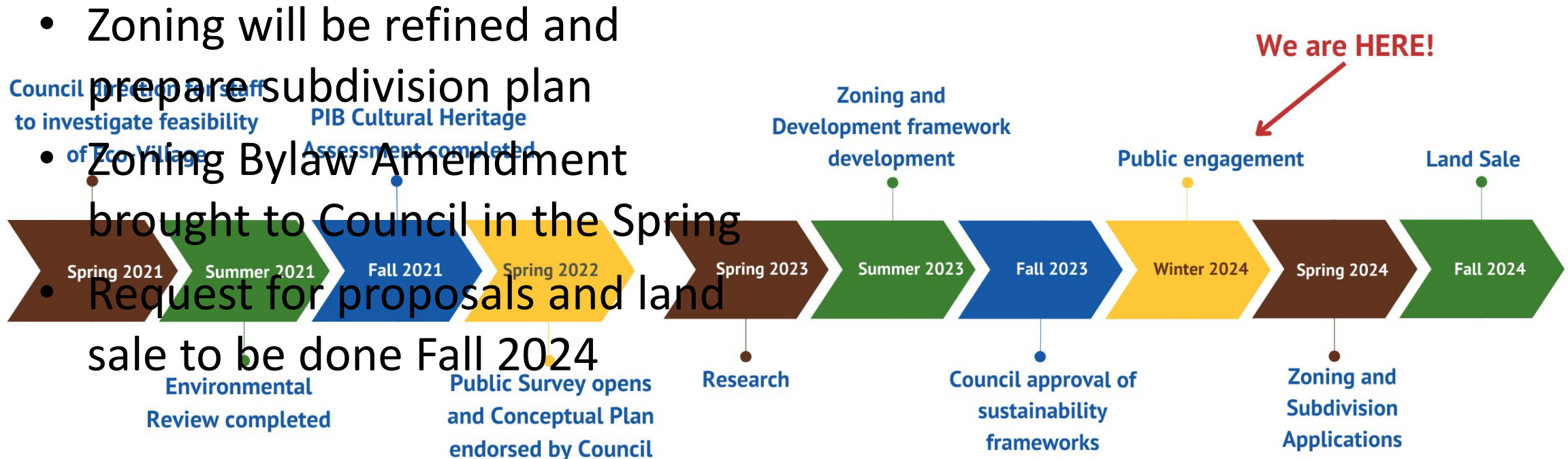
- Water and sewer mains will provide service to Eco Village
- Public roads will be upgraded by developer
- Emergency access roads are proposed for secondary access out of the site





Next Steps

Project Timeline





Questions?