

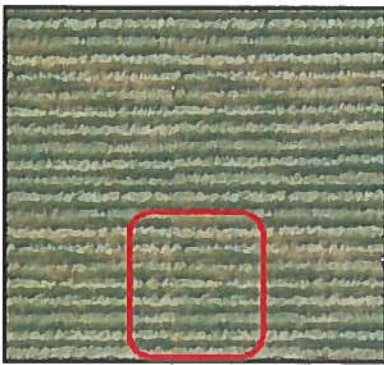
FARM HOME PLATE

What is a farm home plate?

- * Contiguous, contained, and defined area on a lot
- * Includes all residential uses (buildings, accessory buildings, patios, lawns, etc. except temporary farm worker accommodation)
- * Does not need to include farm buildings or any other buildings not associated with the residence

Where can a farm home plate be located?

OPTION 1



ABUTTING THE ROAD

OPTION 2



NOT SUITABLE LAND
(ASSESSED BY AGROLOGIST)

OPTION 3



EXISTING FARM HOME
PLATE OF ESTABLISHED
DWELLING

Can I have more than one farm home plate?

You cannot create more than one farm home plate per Lot. If you already have two or more farm home plates legally established, you can still use your existing farm home plates for as long as the residence remains.

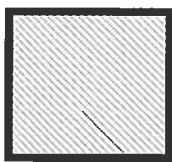
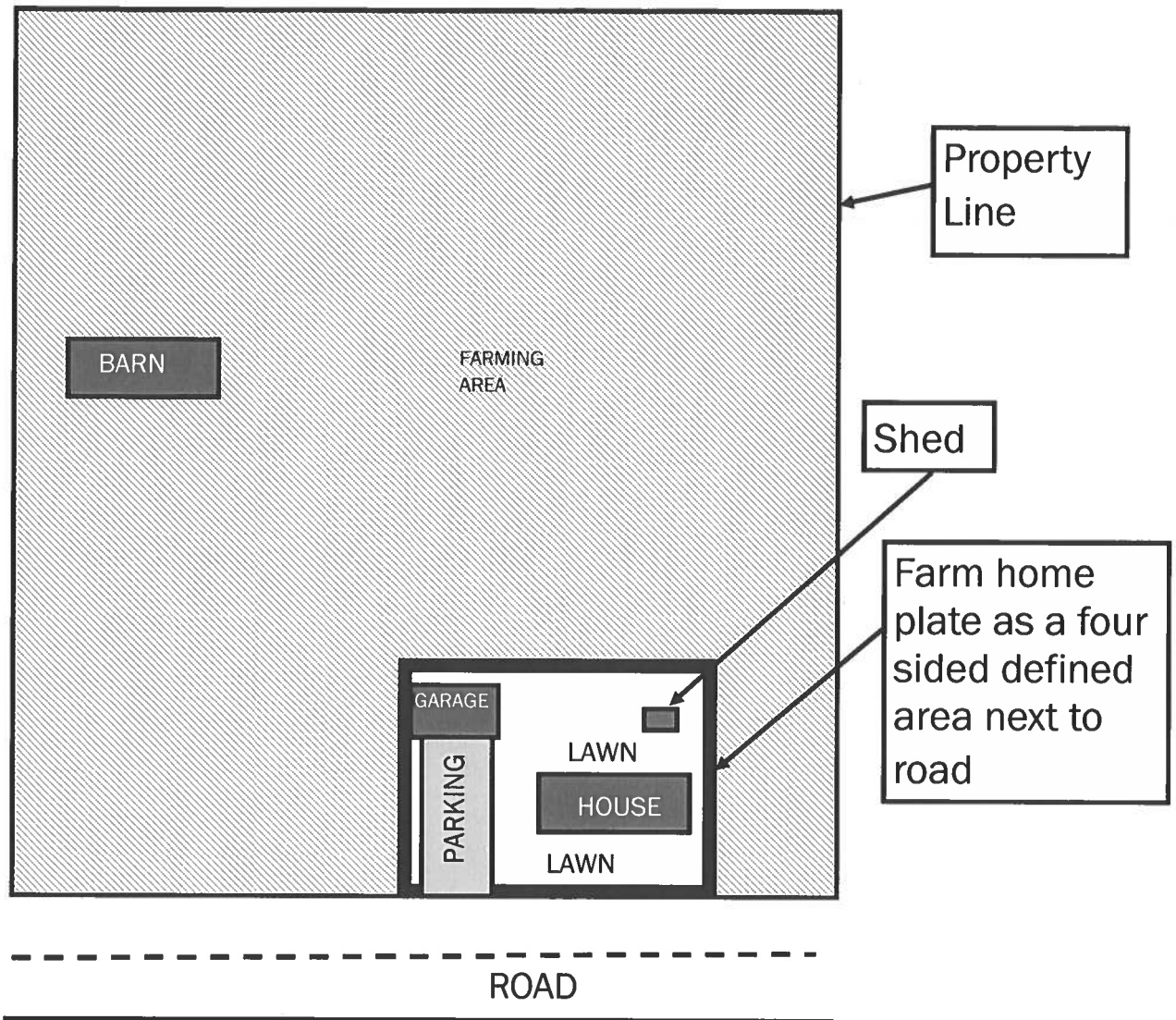
What can I build within the farm home plate?

Farm home plates are for homes, carriage houses and associated accessory uses/buildings that are permitted under the lot's zoning. All of the residential buildings and structures are to be contained within the farm home plate area and are limited to covering 45% of the area of the farm home plate.

A1 Zone: Maximum Farm Home Plate is 905 m². Maximum Coverage is 45% (407.25 m²)

A2 Zone: Maximum Farm Home Plate is 1,200 m². Maximum Coverage is 45% (540 m²)

SAMPLE FARM HOME PLATE BOUNDARY



Area outside farm home plate
 No residential uses
 Agriculture and agricultural use buildings (including
 Temporary Farm Worker Accommodation)



Area within farm home plate
 Residential uses within this area only

CONTIGUOUS

All connected with
 no gaps in between

CONTAINED

No extension of residential
 use outside farm home plate

DEFINED

Clear distinction between
 areas inside/outside of
 farm home plate