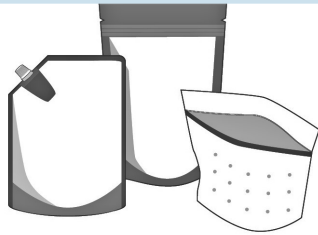


5 TYPES OF OTHER FLEXIBLE PLASTIC PACKAGING

ACCEPTED AT THE SUMMERLAND LANDFILL RECYCLING DEPOT ONLY



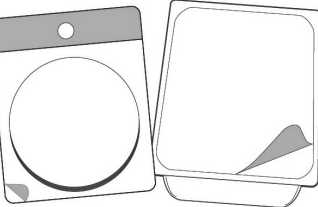
1) Zipper Lock & Stand-Up Pouches:

Including bags with a zip-seal top, like those for frozen fruit and stand-up pouches like those for oatmeal or quinoa.



2) Crinkly Wrappers, Bags & Bars:

This includes things such as bags for chips, energy bars, wrappers for cheese, etc..



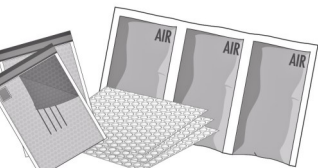
3) Flexible Packaging with Plastic Seal:

Packaging for things like deli meat and cheeses, fresh pasta, etc.



4) Woven & Net Plastic Bags:

Such as netting for onions, avocados, oranges, and woven plastic bags like those for rice and dry goods.



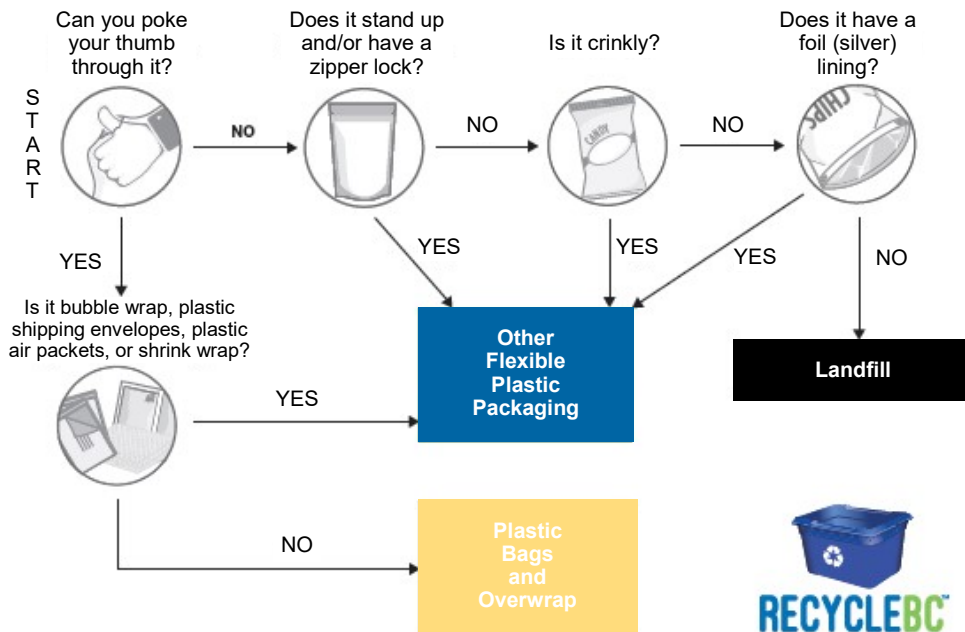
5) Non-Food Protective Packaging:

Padded protective plastic such as shipping envelopes, air packets, bubble wrap, etc.

ALL MATERIAL MUST BE CLEAN AND DRY
DO NOT PLACE IN CURBSIDE CARTS
DO NOT MIX WITH OTHER RECYCLABLES

Unsure if it is Other Flexible Plastic Packaging?

Follow this chart to find out if your material is Other Flexible Plastic Packaging



Look for one or more of the following characteristics:

- Multiple layers of different plastics
- It is crinkly & loud when crumpled
- Is flexible & does not stretch
- Has a foil lining
- Has a seal/zipper top

Not Accepted:

- ~~X~~ Plastic squeeze tubes
- ~~X~~ Plastic lined paper/paper lined plastic
- ~~X~~ 6-pack rings ~~X~~ PVC/Vinyl
- ~~X~~ Cellophane for flowers/gift baskets
- ~~X~~ Squishy foam
- ~~X~~ Plastic strapping
- ~~X~~ Biodegradable plastic

Where is Other Flexible Plastic Packaging Accepted?

- ✓ Starting January 1, 2019 Other Flexible Plastic Packaging will be accepted at the Summerland Sanitary Landfill Recycling Depot in the designated recycling area.
- ~~X~~ NOT accepted in your blue curbside cart.
- ~~X~~ Other Flexible Plastic Packaging cannot be mixed with other recyclables.

Why does Other Flexible Plastic Packaging have to be recycled separately?

- It consists of multiple layers and combinations of plastics. These layers need to be deconstructed in a different way than most recycling streams.
- Mixing it with curbside recycling will result in contamination and may prevent the materials from being recycled.

Have questions about what can be recycled and where?

Call or visit:

Recycling Council of BC Recycling Hotline at 1-800-667-4321 www.rcbc.ca

or

Recycle BC

www.recyclebc.ca/what-can-i-recycle/

13211 Henry Avenue, Box 159
Summerland, BC V0H 1Z0
Tel: 250-494-6451 www.summerland.ca

