



New housing starts in Summerland are down from previous years, which isn’t surprising given the current economic uncertainty and cooling real estate market. However, thanks mainly to two large-scale affordable housing projects now under construction, the annual value of new construction for 2025 is already the highest in Summerland’s history. Halfway through the year, the District had issued building permits for construction values totaling \$81.5M, of which \$61M is for the two affordable housing complexes. The previous record for a full year was \$59.8M in 2021.

Under construction are:

- a five-storey 60-unit BC Housing project with space on the ground floor for the food bank being built on Henry Avenue, across the street from Municipal Hall. The \$33.3M project is a collaboration between the Turning Points Collaborative Society, Summerland Food Bank and Resource Centre, and United Church and is supported by Council through the waiving of development and building fees, and approval of height and parking variances.
- a four-storey 90-unit affordable seniors housing apartment being constructed on Dickson Avenue at the site of the old Legion Village. The \$27.7M project is being developed by the Parkdale Place Housing Society and is supported by Council through the waiving of development and building fees, development cost charges, and offsite upgrades.

Council is excited to see these projects move ahead given the need for affordable housing in the community, and the timing couldn’t be better to create local economic spin-off during an otherwise slow construction year.

~ Mayor Doug Holmes

Builders and residents

As of September 2, 2025 requests for Electrical Utility, Water and Sewer Services, earthworks and driveway access permits will be taken at Works & Infrastructure, 9215 Cedar Avenue, 7:00 AM to 3:00 PM, Monday through Friday.

If you would like to schedule an appointment to make an application outside of the timelines mentioned above or require further assistance, please contact Works & Infrastructure at 250-494-0431.

Open burning permits

Open burning season is from October 15 to April 15 for owners of agricultural properties over two acres. Permits for the purpose of burning orchard prunings are issued by the Fire Department year round and are valid on a four-year cycle. Please visit the Summerland Fire Department anytime to renew or obtain a new permit. Approval **MUST** be obtained each time you burn; please call the Fire Department at **250-494-7211** to verify the venting index and confirmation to burn. **Open burning on residential properties is strictly prohibited.**

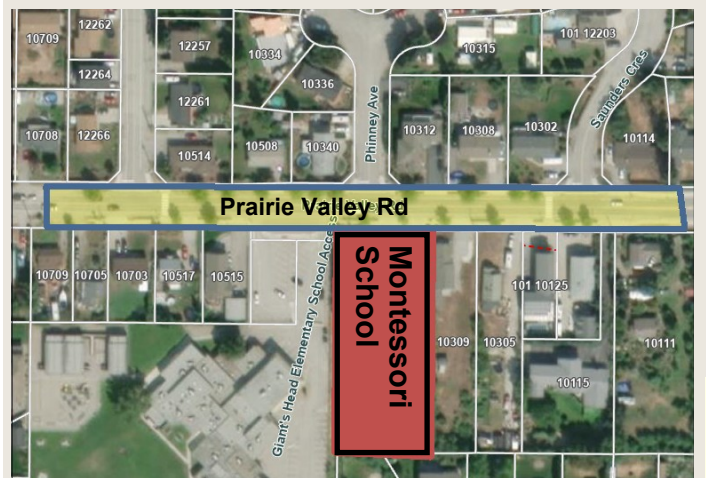
Sewer main and hydrant flushing

The District of Summerland is performing annual sewer main and hydrant flushing throughout Summerland until the end of October. Annual maintenance ensures that sewer mains and hydrants are in good working order. Please use caution when driving by crews working on the road.

School zone remains in effect—

Prairie Valley Road

With the closure of Giants Head Elementary School, some drivers may not realize that Summerland Montessori School is still active right next door. The school zone remains in effect, and the posted speed limits are there to protect students and families. Please remember to slow down during school hours and help keep our kids safe!



Ongoing and upcoming projects

Wharton Street Revitalization Project — The Wharton Street Project continues to progress with much of the underground utility, road, and path work on Wharton and Victoria already completed. Underground electrical will be installed eastward from Kelly Avenue to the substation on Prairie Valley Road and Giants Head Road.



Prairie Valley Road from Darke Road to Morrow Avenue — Prairie Valley Road has been paved from Darke Road to Morrow Avenue. This project includes a new multi-use path, sanitary sewer and water infrastructure. The District would like to thank residents for their patience on this multi-year project.

Wastewater Treatment Plant Primary Clarifier Upgrade — pouring of the base slabs for the primary clarifier / pump gallery, splitter box and blending box was completed in mid-August. The slabs were backfilled shortly after and wall forming, re-enforcement (rebar) installation progressed until the first wall pour was completed on September 11 (pictured).



Sani-station closed for the season

The Trout Creek sani-station will be closed for the season Friday, November 7, 2025.

Fire Prevention Week

This year’s theme is “Charge into Fire Safety: Lithium-Ion Batteries in your home” and runs from October 5 – 11, 2025. For more information, visit www.summerland.ca/city-services/fire-protection/fire-prevention-week.



Seasonal closure—

Giant’s Head Mountain Park Road and College Road

Closed to vehicular traffic from October 31, 2025 to April 15, 2026.



Follow us on
Instagram
#districtofsummerland



Energy savings for heating—setting your thermostat

In winter, heating costs can go up by as much as 140% compared to the rest of the year. One of the most effective things you can do to control your heating costs is to manage your thermostat effectively. A programmable thermostat is a small investment that can help you manage your heating costs by reducing wasted heat. Simply set it to turn on at the times you're home and turn down when you're out during the day, and at night when you're sleeping.

- **Setting your thermostat at the right temperature is important.** Heating costs rise about 5% for every degree above 20°C (68°F) that you set your thermostat.
 - 16°C when you're away from home and sleeping.
 - 21°C when you're relaxing or watching TV.
 - 18°C when you're cooking or doing housework.
- **Set it and forget it.** Set your thermostat to adjust at certain times of the day, like when you're asleep or at work. Have your thermostat warm up right before you usually get home in the evening.
- **Manage settings on the go.** If you make spontaneous evening plans and have a WiFi-enabled smart thermostat, adjust it right from your smartphone so your home is warmed up for your arrival.
- **Do you have baseboard heating or rely on portable space heaters?** They can be inefficient, especially for large spaces. Make sure you're using yours as efficiently as possible.
- **'Smart' thermostat "learn your routine."** Thermostats like the Nest will learn your daily routine and automatically adjust the temperature for you.

Halloween Haunt Swim

Saturday, October 25 from 6:30—8:00 PM

Join us for some spooky fun, games, swimming and more. Get your tickets [online](#), by phone (250-494-0447), or in person at the Aquatic Centre.

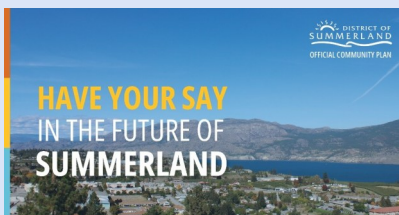
Interested in volunteering for this event? Contact aquatics@summerland.ca.

*All children under the age of 7 and children 7-10 who cannot swim the width of the pool must have a parent/guardian in the water with them. For more information or registration visit www.summerland.ca/recreation.

Save the date—OCP Open houses

The next Official Community Plan (OCP) open houses will take place on October 28 and 30, 2025. Please join us at the

George Ryga Arts and Cultural Centre (2nd floor), 9525 Wharton Street, between 4:00 PM and 8:00 PM to review the changes. Poster boards displaying the proposed changes will be available for viewing, accompanied by a formal presentation at 4:30 PM. Light refreshments will be served. All project details to date can be viewed at www.summerlandocp.ca.



Notice to Summerland irrigators— fall irrigation shut off

Irrigation services will be turned off for the season beginning **Tuesday, October 14**. Irrigators who wish to have their irrigation extended will be required to complete an Extension Irrigation application form and pay \$61.63 plus GST (\$64.71 total) per property.

Extension Irrigation application forms are available on our website www.summerland.ca/city-services/works-and-utilities-department/wu-forms or from the Cashier at Municipal Hall. Please submit completed application form and payment by cash, cheque, debit or credit card to the Cashier at Municipal Hall, 13211 Henry Avenue, 8:15 AM to 5:00 PM Tuesday to Friday, no later than **Wednesday, October 8**.



Bear aware

There have been many reports of bears roaming parks and neighbourhoods. Please be cautious when outdoors and while recreating in our natural areas.

Be bear smart

Bears are preparing for their winter slumber. Garbage, bird feeders and tree fruits can attract bears to your yard, family and neighbourhood. Once a bear becomes used to human food sources it becomes habituated, usually resulting in the bear being destroyed. It is important to keep wildlife wild and communities safe.



Tips to prevent attracting bears to your property:

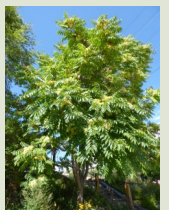
- **Garbage** - properly secure your garbage and keep it indoors until pick-up or until you can bring it to the landfill. Place your carts at the curb no earlier than 5:00 AM on your scheduled collection day.
- **Compost** - use finished compost, leaves, grass or wood chips to cover up fruit or other food waste in your composter. Properly care for your compost by turning it and layering it appropriately to reduce odours.
- **Fruit trees and grapes** - make sure to harvest fruit immediately. Remove all windfall fruit. If you own an orchard, electric fencing is encouraged.
- **Pet food, birdfeeders and gardens** are all attractants for bears. Keep your pet food securely stored indoors. Bring your birdfeeders in for the summer, supplementing them with natural flowers and birdbaths.
- **Barbeques** - To keep your barbeques safe, make sure that they are properly cleaned, covered and don't leave utensils out overnight.

You can report all wildlife encounters to the BC Conservation Officer Service RAPP Line at 1-877-952-7277 or visit www.wildsafebc.com to learn more about how to protect the species around you.

Invasive trees in Summerland—tree of heaven

Invasive trees are the biggest invaders in the neighbourhood.

There are four species that will be profiled as part of a series of articles. **Tree of heaven**, also known as stinking sumac or Chinese sumac, grows to 24 metres in height and 1.8 m in diameter. It resembles native sumac but is distinguished by the glandular, notched base on each leaflet and by the offensive odour it emits. It is a competitive, fast-growing tree that reproduces primarily by seed. It produces up to 300,000 seeds per tree in a year, which can be spread by wind, water, birds and farm equipment. Tree of heaven can also regrow from the stump or lateral roots if cut or disturbed.



What are the impacts of tree of heaven? Chemicals in leaves, bark, roots and seed suppress the growth and germination of surrounding plants. The aggressive root system can cause damage to sewers, foundations and sidewalks. Tree of heaven also supports invasive insects that can invade homes or threaten the agriculture and forest industries. It is the preferred host plant for spotted lanternfly, an invasive planthopper that feeds on a wide range of plants, including grapevines, hops, stone fruit trees, and hardwood trees.

How to control? Seedlings can be hand-pulled when the soil is moist. Mature trees may be controlled using cut-stump herbicide treatment. Bulldozing, mowing and brush cutting can also be effective, but require many consecutive years of treatment. Anyone dealing with invasive trees should consult a professional.

For more information, visit www.oiso.ca/species/tree-of-heaven/.

Keep up to date

The District posts community updates to our website and Facebook account. Council meetings can be viewed on the District's YouTube channel www.youtube.com/c/DistrictofSummerland

Website: summerland.ca

Facebook: facebook.com/SummerlandBC

Instagram: www.instagram.com/districtofsummerland/

Sign up for the monthly newsletter online:

www.summerland.ca/your-city-hall/newsletter

Check out the Mayor's column available on the District's website:

www.summerland.ca/your-city-hall/mayor-council/mayor's-minute

Municipal Hall hours of operation: Tuesday - Friday from 8:15 AM to 5:00 PM. Closed Mondays and Statutory Holidays.