



With more people out enjoying public spaces like parks and beaches, summertime brings an increased need for bylaw enforcement. To handle the greater workload, the District hires a seasonal bylaw officer (April to October) to complement Summerland’s sole year-round full-time officer.

In addition to regular duties like responding to noise complaints and public disturbances, this summer bylaw officers have been enforcing downtown parking restrictions following complaints from a number of downtown business owners about the limited availability of parking due to all the construction. To encourage parking turnover, those found in violation are being issued warnings prior to receiving a parking ticket. While some people would rather see no parking limits, we are trying to balance reasonable enforcement with different parking options to maintain downtown vibrancy during this major construction work that will benefit the whole community.

Summertime also brings an increase in the unhoused population. While Summerland often has transient agricultural workers, we are now also seeing the type of homelessness common to urban centres where people with no connection to the community arrive and pitch tents. When an encampment is established, a District bylaw officer is sent to enforce our bylaws and connect the unsheltered individuals to social support services as many have mental health and addiction issues. The encampment is then dismantled. In the months of May and June, District staff cleaned up nine encampments and two illegal dump sites, the largest requiring 12 person-hours and the removal of two dump truck loads of garbage.

Dealing with the unhoused has become a significant drain on municipal resources, and it requires bylaw enforcement officers to use good judgement and conflict-resolution skills. By combining these and other skills with comprehensive training, Summerland’s bylaw officers are serving the community well this summer.

~ Mayor Doug Holmes

Ongoing and upcoming projects

- **Wharton Street Revitalization Project** – Work is continuing to progress along Wharton Street, construction has also shifted to the intersection of Main Street and Victoria Road North, where water, storm sewer and electrical infrastructure installation have begun. Once this work is complete, there will be a fully raised intersection and extended curbs for pedestrian safety. For project updates including progress photos, parking updates and road closures, please visit the project website at www.whartonstreet.ca.
- **Wastewater Treatment Plant Primary Clarifier Upgrade** – Okanagan Civil Constructors, the primary civil contractor for the project, have broken ground and are preparing the site for the installation of forms and other infrastructure.
- **Prairie Valley Road from Darke Road to Morrow Avenue** – The Prairie Valley Road project from Darke Road to Morrow Avenue is nearing completion. In addition to an upgraded watermain, new sanitary sewer and road resurfacing, this project includes pedestrian safety improvements such as a new multi-use pathway and intersection upgrades. Thank you for everyone’s patience throughout this project.



Wharton Street Project Phase 2: Traffic Changes in Effect – Local Businesses OPEN!

Phase 2 of the Wharton Street Revitalization Project has begun, with major infrastructure upgrades on Victoria Road and improvements to the Victoria Road & Main Street intersection. Temporary road closures and detours will be in place through September.

What to Expect:

- Intersection of Victoria Road and Main Street closed to vehicles
- Hunt Street and Victoria Road South closed at Elliot Street (local traffic only)
- No access to Victoria Road from Main Street
- No truck traffic between Kelly Avenue and Victoria Road on Main Street
- Wharton Street (Kelly Avenue to Victoria Road) remains closed – detours in place
- A drop-off zone will be provided in front of the Baptist Church for summer camps
- Temporary bus stops will be installed for transit users, and some route detours will be in effect

Local businesses are open, with nearby parking, drop-off zones and pedestrian access maintained. Thanks for your patience during this important work. Full details available at www.whartonstreet.ca.

Powell Beach

Thanks to the District’s beach cleaner and the hard work of our dedicated Parks team, the sandy beach at Powell Beach is looking better than ever! Enjoy Powell Beach all summer long with free parking, washrooms, and a water bottle refill station! Park gate open from 8:00 AM—9:00 PM.



Explore autumn adventures in Summerland!

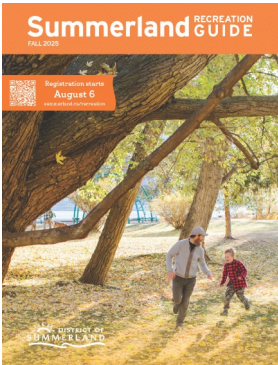
Summerland recreation is excited to announce the release of its 2025 fall recreation guide, inviting residents to embrace the season with new opportunities for fun, fitness, and community connection. Fall is an ideal time to try something new, and the guide offers a variety of programs designed for all ages and interests.

Highlights include:

- Swimming lessons for children and adults
- A wide selection of fitness classes to suit every level
- Full schedules for the Summerland Arena and Aquatic Centre, including public skating, family swims, and facility bookings

Residents can view the guide online at www.summerland.ca/parks-recreation/recreation-guide. Registration for all fall programs opens on August 6 at 6:00 AM.

Let’s make this fall active, engaging, and full of community spirit!



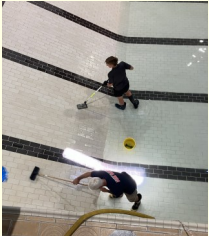
Voyent Alert!

Receive notifications for critical events, wildfires and flooding. Sign up now at <https://www.summerland.ca/city-services/notifications>.



Summerland Aquatic and Fitness Centre Annual Maintenance Shut Down

The Summerland Aquatic and Fitness Centre will be shut down from August 23-September 7 for annual cleaning and maintenance. Both the pool and gym will be closed during this time.



Living in wildlife country

WildSafeBC recommends that residents walk around their property at least once a year and review how they can reduce providing habitat to potential conflict species.



Remove or Secure Attractants

- Do not store garbage, food scraps or other organic waste outdoors. If you have curbside collection, only put the containers out on the morning of collection day, no earlier than 5:00 AM – never the night before. Make sure recyclables have been cleaned.
- Protect fruit trees with electric fencing or pick fruit early and do not let windfall accumulate.
- Avoid feeding birds when bears are most active (April to November) and ensure birdfeeders are always inaccessible to non-target species such as bears, deer, squirrels and raccoons. Do not let seed accumulate that may attract rats and other rodents.
- Feed pets indoors and keep pets inside at night.
- Keep your barbecue clean by burning off uncooked food and emptying the grease container.



You can report all wildlife encounters to the BC Conservation Officer Service RAPP Line at 1-877-952-7277 or visit www.wildsafebc.com to learn more about how to protect the species around you.

Sewer main and hydrant flushing

The District of Summerland is performing annual sewer main and hydrant flushing throughout Summerland until the end of October. Annual maintenance ensures that sewer mains and hydrants are working properly. Please use caution when driving by Crews working on the road.



Puncturevine alert

The spiny invasive plant called **puncturevine** continues to be on the move in Summerland and we want your reports! Contact us at oasiss@shaw.ca if you find any.



Puncturevine is an annual introduced from Mediterranean areas. It is a low growing plant that matures from a taproot and branches in all directions up to 3 metres in length. The stems are covered by hairy leaves that are divided into six to eight leaflets. Flowers are small and yellow. The fruit is a roughly circular, hard spiny bud with five sections that split when mature. Each section has two spines that are so sharp and hard they can pop bike tires, puncture shoe soles or embed in dogs’ paws. Puncturevine prefers sandy or well-drained soils and readily invades disturbed ground. It typically infests vacant lots, gravel parking areas, roadsides, unpaved trails and beaches. If you have puncturevine on your property, take action. Hand-pulling can provide good control if done prior to seed formation. If done after seed set, pick up any loose seedpods and place in the garbage to prevent re-infestation. For more information visit www.oiso.ca/species/puncturevine/.

Pet owner responsibility

Please pick up after your pet! If you leave home with your pet, be prepared to clean up after it by carrying plastic bags. The municipality has joined in the clean up effort by placing several doggy bag stands throughout the downtown area and parks. If you forget your doggy poop bag, please feel free to grab one.



If you want to take your dog on the road with you, please know that all dogs travelling in vehicles must be tethered or confined. It is recommended that you use a leash no longer than 2 m (6.5 ft). You must have your dog on a leash while on a highway, in a park or other public place unless it is a designated dog area, and try to stay at least 10 m (30 ft) away from playgrounds. Please look for and obey all signage to do your part as a responsible pet owner.

For more information visit www.summerland.ca/city-services/dog-licencing-control.

Recycle your household batteries

Batteries are dangerous when placed in curbside recycling or garbage. They create fires when damaged. All household batteries under 5kg (11 pounds) in weight can be brought to the locations below for free drop-off during business hours. Larger lead acid batteries can be brought to the Summerland Landfill & Recycling Depot for free. Free drop-off of batteries during business hours:

- Pharmasave
- Home Hardware
- Bottle Depot
- Landfill



Keep green cart for making food

Compost from food scraps makes local food. Contaminants like plastics, garbage and glass make creating quality compost much, much harder. Some of the materials that cause the biggest problems include:

- **Food containers like paper tubs, plastic tubs and glass jars.** Just because it was used for food does not mean it should be placed in the green cart. Food containers can be washed out and recycled. Glass, flexible plastics and foam packaging should be brought to the Summerland Landfill & Recycling Depot directly. Containers made of hard plastics, paper or metal can be recycled in your blue recycling cart.
- **Cardboard and paper boxes.** Cardboard does not break down easily in a compost system. Cardboard boxes including pizza boxes should be emptied and placed in your blue recycling cart. Residents with excess cardboard can deposit at Summerland Landfill & Recycling Depot.
- **Plastics including compostable plastic bags.** Plastic bags, plastic plant pots and plastic stickers from produce do not break down in the compost system. Plastic bags labelled compostable may slowly dissolve in a compost pile but often stick around and gum up the compost screeners. They also create small flecks of plastic that are very hard to remove. Residents should line their green bins with yard waste or paper, not plastic bags.

The District of Summerland is working this summer to reduce contamination. New trucks are being deployed with cameras that will help identify contaminants in loads. District Staff will also be lifting cart lids placed at the curb to look for contamination.

Voluntary water reduction

The District is asking residential property owners to voluntarily reduce their water use, especially outdoor watering, in response to escalating drought conditions and early pressure on our water supply.

Watering restrictions are not currently mandated, but we are urging all residential property owners to act now by voluntarily following Stage 2 watering restrictions as follows:

Sprinklers used for trees, shrubs, and lawns – water before 9:00 AM or after 6:00 PM on the following days:

- Sundays and Thursdays for even-numbered addresses
- Saturdays and Tuesdays for odd-numbered addresses

Micro-irrigation, drip irrigation, or a hose with a shut-off nozzle may be used to water trees, shrubs, or vegetables on any day, at any time. For more info, visit www.summerland.ca/city-services/utilities/water/water-restrictions.



Keep up to date

The District posts community updates to our website and Facebook account. Council meetings can be viewed on the District’s YouTube channel

www.youtube.com/c/DistrictofSummerland

Website: summerland.ca

Facebook: facebook.com/SummerlandBC

Sign up for the monthly newsletter online:

www.summerland.ca/your-city-hall/newsletter

Check out the Mayor’s column available on the District’s website:

www.summerland.ca/your-city-hall/mayor-council/mayor's-minute

Municipal Hall hours of operation: Tuesday - Friday from 8:15 AM to 5:00 PM. Closed Mondays and Statutory Holidays.