



Media Release

For Immediate Release

DATE: July 23, 2025

Traffic Impacts Coming for Next Phase of Wharton Street Revitalization Project: Businesses Remain Open

SUMMERLAND – The next phase of infrastructure upgrades is set to begin later this month, bringing temporary road closures and traffic changes to the downtown area. This second phase involves utility and road upgrades on Victoria Road, as well as improvements to the Victoria Road and Main Street intersection to enhance pedestrian safety.

Starting July 28, temporary road closures will impact access to Victoria Road North and Main Street. These closures are expected to last through September, with limited local access and restricted parking during the construction period. During this time, the public can expect the following:

- Intersection of Victoria Road and Main Street closed to vehicle traffic.
- Hunt Street and Victoria Road South to be closed at Elliot Street, except for local traffic and drop-offs.
- Access to Victoria Road from Main Street will not be permitted. Vehicles travelling on the west end of Main Street, before Victoria Road, will be directed to a turnaround area.
- Truck traffic is not permitted on Main Street between Kelly Avenue and Victoria Road.
- Wharton Street (between Victoria Road and Kelly Avenue) remains closed, and residents are asked to continue using detour routes.

Local businesses remain open, with alternative parking locations nearby. Temporary turnarounds will be in place, and drop-off zones and pedestrian corridors will accommodate access.

Road restorations will take place as construction progresses, with efforts made to reopen areas outside the work zone at the end of each day. Emergency services will continue to have access to the area throughout the duration of construction.

The District appreciates everyone's patience and cooperation during this important work.

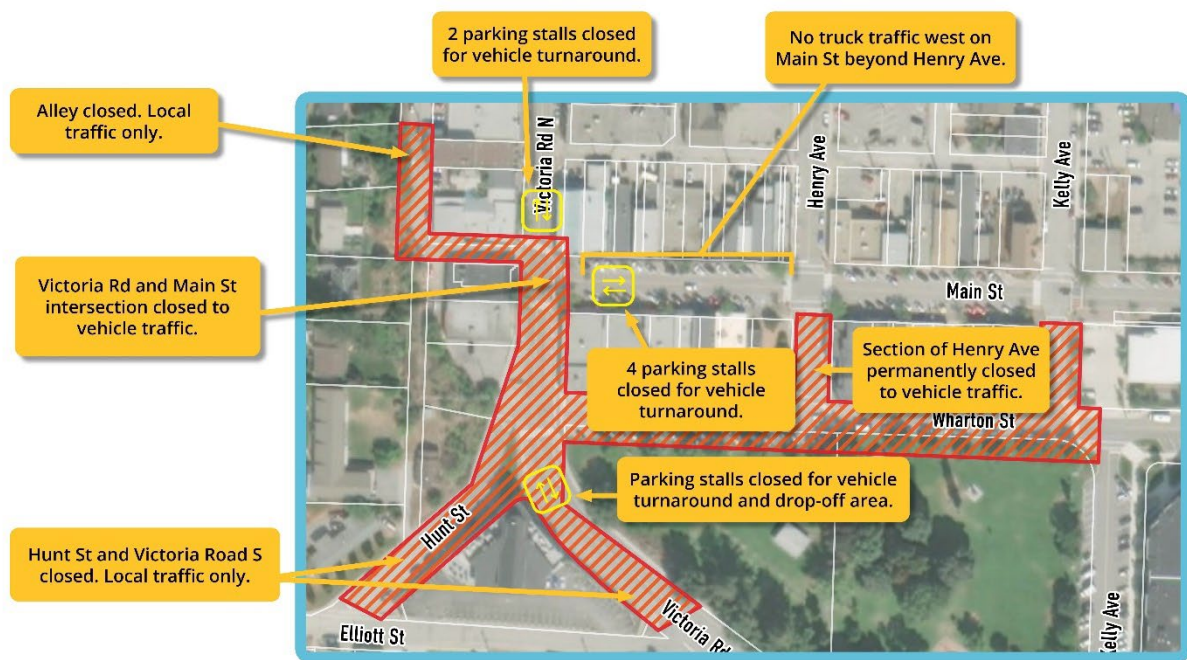
For ongoing updates and detailed project information, please visit www.whartonstreet.ca.

-30-

For further information:

Joe Mitchell
Director of Works & Infrastructure
jmitchell@summerland.ca
250-404-4096

1 photo enclosed



Phase 2 Wharton Street Revitalization Construction Road Closures