

Investment and Relocation Guide Summerland, BC

2015/2016



Table of Contents

Welcome to Summerland	3
Why Summerland	4
Getting Here	5
Municipal Government	6
Business Overview	7
Chamber of Commerce	8
Business Licensing	9
Financial Services	10
Community Profile	11
Climate & Weather	14
Employment	15
Local Research Facility	17
Wineries	18
Transportation	19
Development & Industrial	22
Housing	24
Housing & Development	25
Housing: Real Estate	27
Utilities & Services	28
Education: Early Childhood	30
Education: Schools	31
Education: Post Secondary	32
Community Services: Bussing Options & Medical Services	33
Community Services: Community Support Services	34
Cultural Services	35
Places of Worship	36
Recreation: Outdoor Activities & Attractions	37
Shopping	39
Annual Event Listing	40
Resources	42



Letter from the Mayor

Summerland is ready to welcome you! We are a friendly community, a true jewel of the Okanagan, boasting four seasons of activities and adventure. Mountains, orchards, wonderful local beaches, along with spectacular views make us one of the most magnificent places in the world to live.

Summerland is “open for business” with a brand new industrial area waiting for your business and space available right on Main Street. We have many unique businesses and interesting people here such as our local silviculture industry and cherry packing plants that ship their products around the province and around the world, cutting edge technology companies, local custom manufacturers, some of the best wineries around, research scientists that staff the Pacific Agricultural Research Centre, and artisans of every description.

You can raise your family or retire in a safe, friendly environment with excellent schools and many cultural and sporting opportunities. Staying active is easy on our biking, hiking and walking trails, world class golf courses, tennis courts and so much more. Winter brings hockey, curling, skating, nearby skiing and of course our recreational facilities and pool are always available.

Summerland hosts many family festivals and sporting events including mountain bike and long board races, Action Festival, the Kids Sprint Triathlon, the Fall Fair, Festival of Lights and more.

Summerland is a wonderful place to live and do business. What are you waiting for? Come live, work and play in beautiful Summerland – we have it all!

Peter Waterman
Summerland Mayor
District of Summerland
13211 Henry Avenue
Box 159
Summerland, BC, V0H 1Z0
Phone: 250 494-6451
Fax: 250 494-1415
Email: info@summerland.ca
www.summerland.ca



Why Summerland



1. Lifestyle

Summerland residents enjoy long and healthy lives. According to statistics published by the B.C. Government in 2012, Summerlanders live to an average age of 83, and Summerland has among the lowest rates of crime and economic hardship in the province. There are plentiful health services available in town, and the Penticton Regional Hospital is just a 15 minute drive away. Fitness facilities and local food options also part of the abundant lifestyle in Summerland.

Summerland is centrally located with easy access to communities and business centres around the Okanagan Valley. Summerland is among the best places to live, start a business, raise a family, and earn a world-class education. The community is also within easy driving distance to the province's largest business hub of Vancouver, and just over an hour to the US border.

2. Financial advantages

How many other communities are home to a \$500,000 capital fund to promote growth and boost new business? Summerland Capital, created by Summerland Credit Union, is a powerful tool to support existing and burgeoning business, and it is exclusive to our community. All of our financial institutions offer a wide range of programs and the kind of personal service that can help entrepreneurs succeed in business.

3. Career/Business advantages

If you're looking to start your own business, Summerland has the foundations that can support your success. From available industrial land to fast internet and mobile business licensing options to help you expand, Summerland is the perfect location for your company to make its mark.

4. Education

Summerland has high quality education options for both your business and your family. Summerland schools provide excellent education at the elementary, middle school and high school levels, and provincial test scores show that students consistently score higher than the provincial average. With close proximity to both Okanagan College and UBC Okanagan Campus, obtaining that university degree or additional skills training is both practical and achievable.

5. Climate and Recreation

Summerland's tourism moto is "Take your Time," a reflection of our winding roads, rolling hills and the community's general penchant not to rush things. With more than 2,000 hours of bright sunshine per year to enjoy, you can find outdoor activities of every kind for your day off, plan a business meeting on the golf course, or work from your laptop on the beach.

Getting Here

Summerland is located along Highway 97, which runs from the Yukon and Alaska through the centre of British Columbia to Washington, Oregon and California. This transportation corridor provides access to a potential market of more than 40 million people.

The Okanagan connector (97C) means Summerland is just a four-and-a-half hour drive from Vancouver. From Alberta, Summerland is accessed via Highway 1 (Trans-Canada), 16 and Highway 93.

Travelling by air:

— Kelowna International Airport is a one hour drive away, and is one of Canada's busiest airports with more than 200 departures per week.

— Penticton Airport is a 15 minute drive away (18 km); it offers four daily scheduled flights to/from Vancouver with Air Canada Jazz making it easy to catch connecting flights. WestJet offers 1 flight per day to and from Calgary.



Summerland to:	Driving Time	Kilometres
Penticton	15 min	21
Peachland	17 min	21
West Kelowna	32 min	39
Kelowna	40 min	46
Kelowna Airport	51 min	60
Kamloops	2 hrs 10 min	221
Vancouver	4 hrs	400
Osoyoos	1 hr	77
USA Border	1 hr	80
Calgary, AB	7 hrs 30 min	653
Edmonton, AB	10 hrs	942



Municipal Government

District of Summerland

Mailing: Box 159, Summerland B.C.

V0H 1Z0

www.summerland.ca



**Summerland
Population
2011 - 11,280**

Incorporated in 1906, the District of Summerland is governed by an elected Council comprised of a Mayor and six Councillors elected for three year terms.

Municipal Hall

13211 Henry Ave

Telephone (250) 494-6451

Fax (250) 494-1415

Building Inspector/

Development Services (250) 494-1373

License and Bylaw Service (250) 494-6451

Dog Control (250) 494-6446

Parks & Recreation

Office: 13205 Kelly Ave (250) 494-0447

Aquatic & Fitness Ctr: 13205 Kelly Ave. (250) 494-0447

Fax (250) 494-3222

Arena: 8820 Jubilee Road East (250) 494-0447

Curling Club: 8820 Jubilee Road East (250) 494-9322

Library: 9525 Wharton Street (250) 494-5591

Museum: 9521 Wharton Street (250) 494-9395

Art Gallery: 9533 Main Street (250) 494-2686

Engineering & Public Works

9215 Cedar Ave (250) 494-0431

Fax (250) 494-3399

Water, Sewage, Roads & Electrical Utility

Emergency after hours (250) 493-0005

Landfill: 17202 Bathville Road (250) 494-0583

Fire Department

10115 Jubilee Road West

Non emergency (250) 494-7211

Fax (250) 494-7815

RCMP

Address: 9101 Pineo Court

Non Emergency (250) 494-7416



Letter from the Chamber President

Summerland is a community of 11,000+ where small is consistently cited as a good thing. Perfectly situated between regional service centre Penticton and the larger city of Kelowna, Summerland is within 20 minutes either way of an additional 45,000 people and within an hour, of more than a quarter million people.

Our size allows us to be both innovative and creative and our public and private sector organizations work collaboratively to market and grow our community.

The Okanagan's most charming town centre, the region's only historic steam railway, 14 local wineries, and beaches enough to satisfy everyone will keep you entertained. On the business side world class technology companies as well as the Federal

Agriculture Research Center keep our face both turned toward the future and rooted in our agricultural past.

What we know about living in Summerland is backed up by hard facts. In July of 2013, BC Stats showed that according to 6 economic indicators, Summerland is the 2nd best off community in BC in which to live. The word is out so don't wait too long. We invite you to join us here, either for a visit, or a lifetime, and see what makes Summerland special.

Kelly Marshall

President

Summerland Chamber of
Commerce

15600 Highway 97

PO Box 130

Summerland, BC, V0H 1Z0

Phone: (250) 494-2686

Fax: (250) 494-4039

www.summerlandchamber.com





Summerland is the only municipality in Western Canada where every business license holder is automatically a member of the Chamber of Commerce. This high level of business support gives every business owner equal access to important marketing benefits, savings programs, and training or mentoring opportunities.

The Summerland Chamber of Commerce is a not-for-profit society comprised of more than 700 business license holders in Summerland, corporate and associate (non-profit members).

Run by a volunteer Board of Directors, the Chamber provides networking opportunities, facilitates and supports business and community events, markets the community to both regional and international tourism markets, and operates the Visitor Centre, a year-round service that welcomes more than 11,000 visitors a year.

The Chamber also serves members as a liaison with the BC Chamber of Commerce and speaks on behalf of its members as an advocate to various government agencies.

The three key areas in which the Chamber operates are Tourism, Member Services and Business Retention and Expansion.

Visit our website at www.summerlandchamber.com to download the 2014 Strategic Plan.



Doing Business in Summerland



Summerland is home to an initiative that is unique in the Province of British Columbia. Every business that takes out a license with the District of Summerland automatically receives a membership with the Chamber of Commerce. This membership is a tremendous value to new and existing business owners, who are able to access training programs, discounts, promotional and networking opportunities.

Average Business License fee: \$175 annually

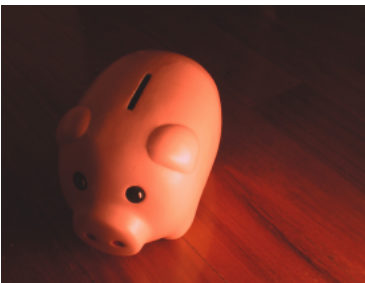
Business owners who require the flexibility to operate throughout the Okanagan Valley can also purchase a Mobile Business License, which has been available through the District of Summerland since 2007. Today, approximately 15% of Summerland business owners also have a Mobile License, saving time and money by not having to apply for licensing in multiple jurisdictions.

Mobile Business License Fee: \$150 annually in addition to Business License Fee

Moving your business to Summerland?

- BizPal: This service can help you find the permits and licences you may require when starting or operating your business. Available through the District of Summerland website: <http://www.summerland.ca/business/>
- Business resources: Visit the Summerland Chamber website for a comprehensive list of local and provincial business resources: <http://summerlandchamber.com/business-resources/>

Financial Services



Summerland Credit Union

Summerland is served by four financial institutions: The Summerland Credit Union, RBC Royal Bank, CIBC and Bank of Montreal.

Summerland Capital – Do you have a great idea, a business plan and the skills to carry it out but need money to put your plan into action? Created by the Summerland Credit Union, Summerland Capital is a new \$500,000 fund to help create jobs and boost the Summerland economy. This fund is designed to foster business incubation, business growth, the attraction of new business and the retention of Summerland's existing businesses. The end goal is to create local employment and keep our community strong. Contact Bob Isaak: bisaak@sdcu.com.

RBC Royal Bank is always interested in talking to small business owners. They have new promotions that provide a variety of cash back rewards for new business clients who open accounts, use their business credit cards or operating lines, or take out business loan insurance. Business clients can also take advantage of their business bank account packages. Contact Terry Sedawie: terry.sedawie@rbc.com.

Bank of Montreal provides commercial banking and lending, small business lending, cash management, and merchant services within the branch. Contact Aleta Quaal: Aleta.Quaal@bmo.com.



Brent Petkau



Brent Petkau

Community Profile



For people considering relocating their businesses or families to the Okanagan, Summerland offers the perfect combination of opportunity and quality of life. Summerland boasts reasonable tax rates, one of the lowest crime rates in the province, and healthy, well educated citizens who are committed to the community. In addition, the District of Summerland has invested significantly in new infrastructure and now possesses one of the finest water systems in the Okanagan region.

“Moving to Summerland really worked for me. To raise a family, it's perfect.”

— Shannon Ferlizza, Zias Stonehouse
Restaurant

In addition to all of the measured characteristics, Summerland is also very close to airports and universities, has the world-class Pacific Agricultural Research Centre within our city limits, offers developable industrial land and has a hardworking and highly educated workforce.

British Columbia Municipal and Regional District 2011 Census Total Population Results

Name	2011 Population	2011 Area Sq. km	Percent Growth 2006 - 2011
British Columbia	4400057	922509.293	7.0
Kelowna	117312	211.816	9.6
Keremeos	1330	2.0933	3.2
Lake Country	11708	122.1933	21.9
Oliver	4824	5.4999	9.8
Osoyoos	4845	8.5562	2.0
Peachland	5200	15.7496	6.5
Penticton	32877	42.104	3.0
Princeton	2724	10.4684	-2.0
Summerland	11280	74.0551	4.2
Vernon	38150	95.756	6.0
West Kelowna	30892	123.5101	13.5

Source: 2011 + 2006 Census, Statistics Canada, Ottawa

Prepared by: BC Stats, Ministry of Labour, Citizens' Services and Open Government

Community Profile



Eric Simard | TOTA | SCC

Summerland has quietly leaped to the top of the Provincial scale in positive socio-economic measurements. Second only to West Vancouver, Summerland ranks 2nd overall in best-off BC regions when measuring economic factors, health care, education, crime statistics and the welfare of children and youth.

Released on July 29, 2013 by BC Stats, the Socio-Economic Indices provide comparative measures among BC regions of six factors: human economic hardship, crime, health problems, education concerns, children at risk and youth at risk. 77 regions are ranked in the Overall Regional Socio-Economic Index with Summerland at #76 (graph ranks in reverse order from worst to best off regions). This new statistical report from BC Stats offers the empirical proof of what we have known about our community all along. Click here to read the full report.

Source: BC Stats: <http://www.bcstats.gov.bc.ca/StatisticsBySubject/SocialStatistics/SocioEconomicProfilesIndices>

OVERALL REGIONAL SOCIO-ECONOMIC INDEX 2012 Ranked from Worst-Off to Best-Off Regions

Local Health Areas	Regional Index	Socio-Economic Index Rank
Surrey	0.01	39
Southern Okanagan	-0.05	43
Princeton	-0.07	46
Vernon	-0.09	47
Abbotsford	-0.10	48
Burnaby	-0.12	49
Central Okanagan	-0.15	51
Vancouver	-0.17	52
Nelson	-0.17	53
Greater Victoria	-0.23	55
Revelstoke	-0.56	72
North Vancouver	-0.56	73
Summerland	-0.75	76
West Vanc-Bowen Isl	-0.84	77

Source: BC Stats Socio Economic Indices



Eric Simard | TOTA | SCC

Community Profile



Kelly Funk | TOTA | SCC



Sophia Jackson

Elevation: 454 metres [1490 feet]
Longitude: 119° 39' W
Latitude: 49° 34' N

Lifestyle is a key reason people choose Summerland as a place to live and invest. Like many Okanagan communities, we benefit from a spectacular climate, beautiful beaches, orchards and wineries.

Summerland also has a growing population of young professionals who cite outdoor recreation opportunities and a burgeoning 'slow-food' movement in this region as their reasons for choosing Summerland. Families are attracted to parks, programs for children, our community funded youth centre and excellent schools.

Summerland's location near Penticton and Kelowna make Summerland the perfect option for those who want access to excellent trade links, while also enjoying a small town way of life.

Selected Census Characteristics

2006

Total Population 25-64 years	5,360
No Certificate, diploma or degree	535
High School Certificate or equivalent	1,420
Apprenticeship/trades certificate or diploma	905
University Certificate, diploma or degree	1,320
Bachelor's Degree	590
Census Families	3,345
Lone-parent families	390
Households	4,545
1-family households	3,265
Multi-family households	40
Non-family households	1,235
Median Family Income	\$58,888

Source:

<http://www.bcstats.gov.bc.ca/StatisticsBySubject/SocialStatistics/CommunityFacts.aspx>

Age Distribution

% Distribution

	Male	Female	Summerland	BC
All Ages	5230	6050	100.0	100.0
0-14	685	765	12.8	16.5
15-24	575	585	10.2	13.1
25-44	890	960	16.4	27.4
45-64	1740	1985	33.0	28.4

Climate & Weather

Summerland enjoys a semi-desert climate with mild, short winters and hot, dry summers. With plenty of sun, moderately hilly terrain and the unique soil properties provided by a volcanic past, Summerland's orchards and vineyards enjoy some of the best growing conditions in the Okanagan. Gardeners can also learn about water-wise and xeriscape gardening through the Summerland Ornamental Garden.



	Annual Precipitation	Annual Average Temperature
Calgary	424 mm (17 in)	3.4°C (38°F)
Edmonton	466 mm (18 in)	3.1°C (37°F)
Montreal	946 mm (38 in)	6.2°C (43°F)
Ottawa	879 mm (34 in)	6.2°C (43°F)
Toronto	800 mm (32 in)	8.0°C (46°F)
Summerland	326 mm (13 in)	8.9°C (48°F)
Vancouver	1113 mm (45 in)	9.8°C (50°F)

Average daily minimum temperatures	
January	-6°C (22°F)
July	14°C (58°F)

Average daily maximum temperatures	
January	0°C (32°F)
July	28°C (84°F)

Annual Climate Information

Average annual rainfall	261mm (10 in)
Average annual snowfall	650mm (24 in)
Average annual total precipitation	326mm (13 in)
Average daily hours of sunshine(May to August)	8.9 hours
Hours of bright sunshine per year	2,027

Employment



“Summerland is the centre of the Okanagan Valley, it's a beautiful area, it's attractive to potential employees.”

— Joe Mazza, Mazza Innovations

Darren Robinson | TOTA | SCC

The traditional industry sector in Summerland has been the fruit growing industry which has been expanding through related enterprises such as wine production. Tourist commercial and light industry have also become significant parts of the local economy. Summerland's economy is stable with employment from a range of sectors including: agriculture, manufacturing, commercial, retail, tourism and agricultural research.

Top Employers in Summerland

Sector	Name	Product/Service	# of Employees
Education	SD67	Education	150
Health Care	Summerland Senior Village	Senior Care	150
Government	District of Summerland	Public Service	89
Government	PARC	Research	90
Retail	Nestor's Market	Grocery	60
Retail	IGA	Grocery	31
Manufacturing	Arrow Industries	Truck Caps	20
Manufacturing	Range Rider	Truck Caps	21
Manufacturing	Ripley Stainless	Steel Tanks	35
Manufacturing	SunView Industries	RV Windows & Doors	20
Finance	Summerland Credit Union Bank of Montreal, CIBC, Royal Bank	Financial Services	75 (total sector)
Tourism	Wineries (15 in total)	Wine	70 FT – 125 in season
Tourism	Summerland Waterfront Resort	Hospitality	20 FT – 60 in season

Labour force characteristics, unadjusted, for the Thompson Okanagan Region (3 month moving average)

	Population	Labour Force	Employment	Unemployment	Participation Rate	Unemployment Rate	Employment Rate
	Thousands				%		
December 2013	434.4	275.0	253.2	21.7	63.3	7.9	58.3
December 2012	434.5	267.1	251.8	15.2	61.5	5.7	58.0

Note: Population 15 and over. Source: Statistics Canada, CANSIM, table 282-0054 and Catalogue no. 71-001-XIE.

Employment

Summerland Labour Force by Industry (NAICS)

Distribution 2006

Industry	2006	Summerland	B.C.
Total labour force	5,145	100.0	100.0
Industry - Not applicable	50	1.0	1.5
All industries (Experienced LF)	5,095	99.0	98.5
Farms	285	5.5	1.8
Forestry and logging	35	0.7	1.0
Fishing, hunting and trapping	—	—	0.2
Support activities for farms	35	0.7	0.1
Support activities for forestry	50	1.0	0.3
Mining and oil and gas extraction	55	1.1	0.9
Utilities	25	0.5	0.5
Construction	485	9.4	7.5
Manufacturing	520	10.1	8.5
Food manufacturing	35	0.7	1.0
Wood product manufacturing	105	2.0	1.7
Paper manufacturing	—	—	0.6
Wholesale trade	185	3.6	4.1
Retail trade	565	11.0	11.2
Motor vehicle and parts dealers	60	1.2	1.1
Food and beverage stores	140	2.7	2.9
Clothing & clothing accessories	75	1.5	1.1
General merchandise stores	45	0.9	1.2
Transportation & warehousing	80	1.6	5.2
Information and cultural industries	50	1.0	2.6
Finance and insurance	110	2.1	3.8
Real estate & rental/leasing	130	2.5	2.3
Professional, scientific & tech. serv.	250	4.9	7.3
Mgmt. of companies/enterprises	—	—	0.1
Admin+support, waste mgmnt srv.	170	3.3	4.4
Educational services	340	6.6	6.9
Health care and social assistance	595	11.6	9.6
Arts, entertainment and recreation	120	2.3	2.3
Accommodation and food services	350	6.8	8.1
Accommodation services	25	0.5	1.7
Food services & drinking places	325	6.3	6.4
Other services (excl. public admin.)	240	4.7	4.9
Public administration	410	8.0	5.0

Source: Statistics Canada. Industry according to NAICS version used in each census.

Local Research Facility



Plant Physiologist and Viticulture specialist Dr. Patricia Bowen in a lab that specializes in wine grape research



Sophia Jackson

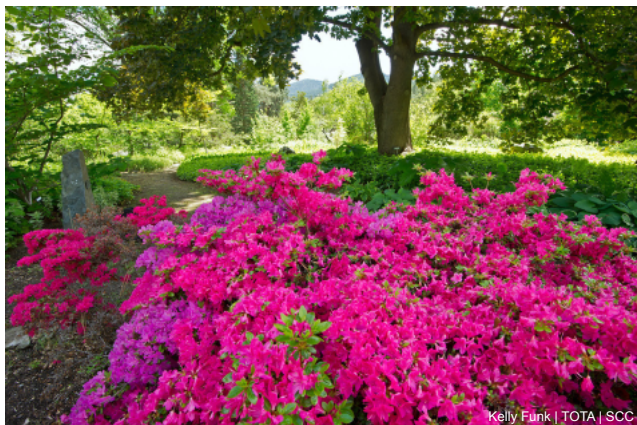


Kelly Funk | TOTA | SCC

For the past 100 years, the federally owned Pacific Agri-Food Research Centre (PARC) in Summerland has promoted the sustainable and economical production of foods in Canada.

The research facility sits on 320 hectares of land, 90 of which are irrigated for horticulture & viticulture research. It is also home to the Summerland Ornamental Gardens, an important botanical resource in the Okanagan region. The non-profit Friends of the Garden Society is responsible for enhancing the garden experience, educating the public and promoting the gardens.

The research centre has 42 labs and employs 92 people, including scientists, lab technicians, and support staff. Much of the research at PARC focuses on horticultural crops such as grapes and tree fruits. The now famous Sweetheart cherry was developed at PARC over many years, and was released in 1994. In 2012 the Sweetheart won the Outstanding Fruit Cultivar Award, by the American Society for Horticultural Science. Thanks to this research, the B.C. cherry market has grown from \$500,000 annually in the 1990s, to \$40 million today.



Kelly Funk | TOTA | SCC

PARC research programs include:

- Molecular Virology & Plant Pathology
- Soils & Environmental Health
- Tree Fruit Breeding & Production
- Viticulture & Enology
- Integrated Pest Management
- Food Safety & Quality
- Bioproducts & Bioprocessing

These research programs are designed for the benefit of local and international producers, in order to enhance the quality of crops, find more efficient production methods and develop strategies for longer harvest seasons. For more information about PARC, visit <http://www.agr.gc.ca/eng/science-and-innovation/research-centres/british-columbia/>.

Wineries



Eric Simard | TOTA | SCC



Darren Robinson | TOTA | SCC



Kelly Funk | TOTA | SCC



Eric Simard | TOTA | SCC



Darren Robinson | TOTA | SCC

Summerland is located in the heart of the Okanagan's wine country and is home to 15 wineries, many of whom are active in the Bottleneck Drive Winery Association.

Our wineries are world leaders in the award winning wines they create, their compelling and creative personal stories, and also their technology and sustainable winery practices.

This vibrant local industry is supported by a variety of local wine services including research labeling, bottling, storage, sales and marketing. So whether you're looking for a dessert wine or sparkling wine for a special occasion or an organic vintage to enjoy with dinner, we've got the perfect selection right on our doorstep.

To find out more please visit:
www.bottleneckdrive.com

“Everyone is really supportive of other businesses and we try to team up together to attract more customers. In Bottleneck Drive we all feel - as one winery does better it improves the lot for everyone, for all the different wineries.”

— Gillian Stohler, SummerGate Winery



Darren Robinson | TOTA | SCC



Eric Simard | TOTA | SCC

Transportation

Trade and Transportation Routes

Summerland is located on Highway 97, which is the longest continuously-numbered route in British Columbia, and the longest provincial highway in Canada, running 2,081 km (1,293 mi) from the Canada/U.S. border at Osoyoo (just one hour south of Summerland) to the BC/Yukon border in the north.

The Okanagan Valley Corridor is a high quality route with limited delays in urban areas, and provides a gateway for north-south international trade. It links the United States to the northern half of British Columbia as well as regions east and west.

Easy access to the Okanagan Connector (Hwy 97C) and the Coquihalla Highway (Hwy 5) means the port of Vancouver is only a 4.5 hour drive from Summerland. To the north, Hwy 97 connects to the Trans Canada Hwy, with transport access to the rest of Canada.



Airports: Nearest International & Regional

Name	Penticton Regional Airport (YYF)	Kelowna International Airport (YLW)
Distance	20 km	60 KM
# of Runways	1	1
# of Airlines	2	8
Daily non-stop flights	5	64
Nonstop destinations	Vancouver Calgary	Vancouver, Victoria, Toronto, Abbotsford, Edmonton, Red Deer, Calgary, Prince George, Cranbrook, Whitehorse, Los Angeles, Seattle Seasonal Direct Flights: Cancun, Las Vegas, Los Cabos, Puerto Vallarta, Phoenix, Ixtapa - Zihuantanejo
Customs agent on premises? Yes (call ahead service)		Yes

Source: January, 2014 - Penticton Airport (250) 770-4422 and Kelowna Airport (250) 765-5125

Transportation

Canada / U.S. Border Services

Location	Osoyoos
Distance	80 km
Address	#202-97th Street, Osoyoos, BC, V0H 1V1
Information	<ul style="list-style-type: none">• 24 Hr service year round• FAST Lanes available• Entering Canada: Normally 1 lane only, 2nd lane in summer daytime, 3rd lane on occasion• Entering the U.S.: three multi-purpose traffic lanes, two lanes dedicated for trucks and one bus lane. Truck lane not always open• Border Information Service provides computerized information 24 hours a day 7 days a week. Agents are only available regular business hours, Monday to Friday (08:00 - 16:00 local time/except holidays.)
Opposite US Port of entry	Oroville, WA
Services offered	<ul style="list-style-type: none">• Designated Commercial Office (DCO)• Designated Export Office (EXPORT)• Duty-Free Shop (SHOP)• Electronic Data Interchange (EDI)• Highway - Land Border Office (HWY/B)• Immigration (IMM)• Low Value Shipments Program (LVS)

Source: Canadian Border Services Agency (cbsa-asfc.gc.ca) and EZ Border Crossing (ezbordercrossing.com)

US Border Parcel Receiving Services

Over the border from Osoyoos is Oroville, Washington, just 88 km from Summerland. In some instances, receiving services allow businesses to save money on shipping by collecting parcels in Oroville. There are two options available:

Name	Address	Contact	Service
Appleway Video (Kinek Shipping)	811 Appleway St, Oroville, WA 98844, USA	Tel: (509) 476-3900 www.kinek.com/appleway	\$3/package and an additional \$3 for any packages over the size of 2 feet x 2 feet. Only accepts packages up to 30 lbs. Open 7 days a week.
Betta's Services LLC	1306 Main Street Oroville, WA 98844, USA	Phone: (509) 476-2888 www.bettasservices.com	\$4 per package. Truck Freight (Semi) shipments from \$20. Restrictions apply. Closed Sundays.

Transportation



BC TRANSIT

Transportation Services

Bus Services

A BC Transit Bus service runs between Summerland and Penticton four times per weekday, with stops at Okanagan College; as well as two weekday stops in Trout Creek. Transit fares are \$2.00 per one way trip within Summerland, and \$4.00 per one way trip to Penticton.

Greyhound Bus Lines provide daily passenger and parcel service to BC and Okanagan Communities.

Door-to-Door

Summerland Transit does door-to-door service for medical and specialist appointments for seniors and those with disabilities and on a space availability basis. These trips could include blood work, physio, doctor, dentist, x-rays etc.

Taxi Saver Service

There is service within Summerland (\$4.00 return) and also a service to Penticton (\$8.00 return). A Taxi Saver program allows seniors and people with disabilities greater convenience to travel throughout Summerland region. For information on eligibility call Municipal Hall at 494-6451.

Airport Services

Penticton and Kelowna Airport are serviced by WestJet, Air BC and other BC Regional air carriers. Shuttle service is available to and from Summerland.

Local Shipping Services

Name	Address	Contact	Services
Canada Post	13246 Victoria Rd N Summerland	(250) 494-6106	Monday-Friday 08:30 -17:00
Canada Post Pharmasave	9515 Main St Summerland	Canada post national: 1-866-607-6301 Pharmasave store (250) 494-7088	Monday – Friday: 09:00 -18:00 Saturday: 09:00 - 17:00 Sunday: 10:00 - 15:00
Greyhound Canada	13415 Rosedale Summerland	(250) 494-8009	Monday-Saturday 07:00-18:00
Courierservices	Penticton	Various	ACECourier,UPS,FedEx, Purolator

Development & Industrial



“We can provide a level of service that many larger communities are unable to provide. We make it as easy and pleasant as possible for people to set up business in Summerland.”

— Ian McIntosh, Director of Development Services, District of Summerland

Industrial Land Use

There are 86 parcels of industrial land in Summerland. The majority of the parcels are located in three designated industrial areas: Bentley Road, Jones Flat, and James Lake. Approximately 18 acres is partially vacant ready for redevelopment from Agriculture to Industrial.

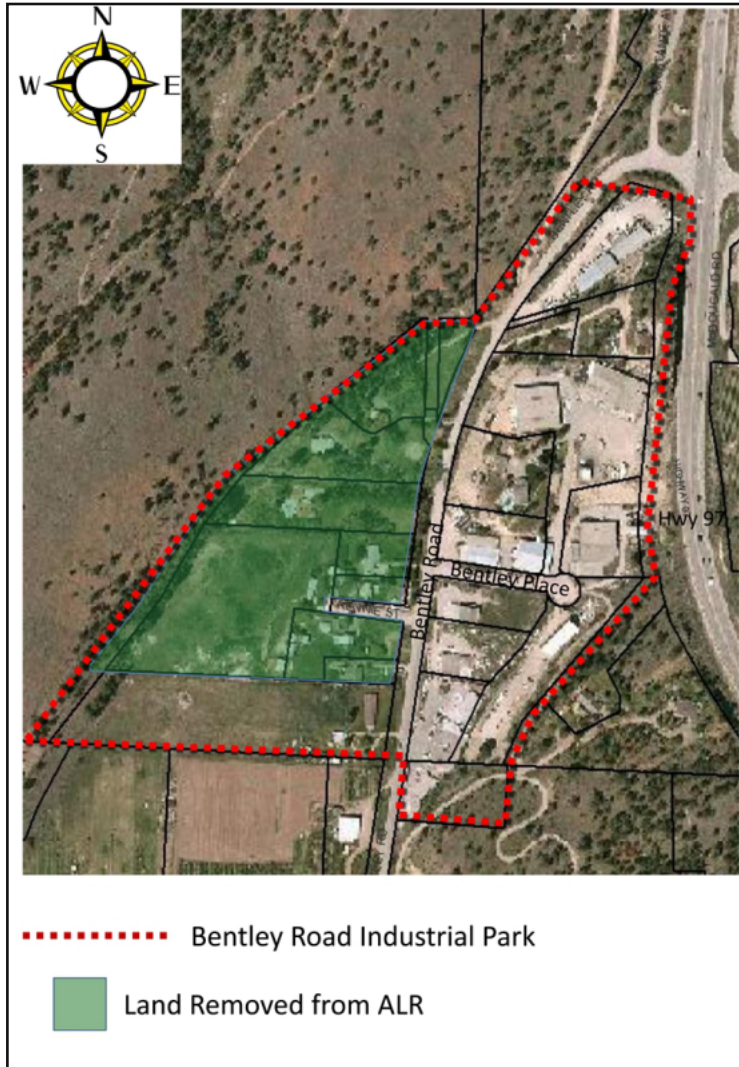
Breakdown of Industrial Land in Summerland:

Zone	OCP Designation	Industrial Area	Acres of	# of Parcels	% Acres	% Parcels
M1	Light Industrial	Bentley Road Industrial Park	18.78	12	14.8%	14.0%
M1-A	Light Industrial	Bentley Road Industrial Park	4.88	1	3.8%	1.2%
A1	Agricultural	Bentley Road Industrial Park	13.31	9	10.5%	10.5%
M1	Light Industrial	Jones Flat Industrial Area	8.27	15	6.5%	17.4%
M2	Medium Industrial	James Lake Industrial Park	56.77	45	44.7%	52.3%
M3	Agri-Industrial	Sumac Ridge Estate Winery	14.23	1	11.2%	1.2%
M3	Agri-Industrial	Mission Bottle Washing Ltd	6.71	1	5.3%	1.2%
M3	Tourist Commercial	Summerland Sweets	1.42	1	1.1%	1.2%
M3	Agri-Industrial	Kettle Valley Dried Fruit on HWY 97	2.65	1	2.1%	1.2%
TOTAL			127.02	86	100.0%	100.0%

*This table does not include 361.81 acres of industrial zoned (M4) land, Municipal landfill. This large piece of land does not contribute to the business economy in Summerland.

Source: District of Summerland – January 2014

Bentley Road Industrial Park Expansion



“We see Summerland as a long term head office.”

— Jai Zachary, Founder/CEO, ElectroMotion Energy



In 2013, more than five hectares of land was removed from the Agricultural Land Reserve (ALR), on the northwest end of Bentley Road, north of downtown Summerland and designated for industrial use.

This land, which is next to Highway 97 and which is intended to expand the Bentley Road Industrial Park, already contains 7.6 hectares of land and is home to several major Summerland employers.

Property owners are now able to easily rezone for industrial uses. One land owner has already successfully rezoned a 4.8 acre piece of land to M1-A industrial, which will allow Business Industrial uses such as automotive repair, high tech research, and broadcasting studios.

The new properties, which sit on the west side of Bentley Road between the Dickinson Farm and Highway 97, are in an excellent location for the transport of goods and services.

For more information on these new industrial properties, contact the Development Services Department at the District of Summerland: <http://www.summerland.ca/departments/development/>

Housing

“There's just a really interesting, forward-thinking, eclectic mix of people in Summerland which makes it interesting to be here.”

— Ian McIntosh, Director of Development Services, District of Summerland



2012 Sustainable Communities Awards for the residential development category

In 2012, the District of Summerland was presented with the Federation of Canadian Municipalities “Sustainable Communities Award for the Residential Development category.”

The award was for new zoning bylaws that focus on denser communities, preserve agricultural land and direct development to land already serviced with municipal sewer and water.

A new Community Climate Action Plan aims to minimize urban sprawl and promote compact, energy-efficient development with access to amenities within walking and cycling distance.

These efforts aim to lower GHG emissions and land degradation related to urban sprawl, save money with less new infrastructure, and make public transit a more viable option.

[Click here to view the video.](#)

Housing & Development

Summerland's forward-thinking zoning bylaws offer multiple opportunities for residential and commercial development

Sustainable

- Developers can be confident about incorporating alternative energy devices, as Summerland's Zoning Bylaw makes allowances for solar panels, geothermal energy and wind turbines.

Commercial

- Up to 2 apartment units are now allowed above a first floor business in the downtown core, building heights have been increased to allow up to four stories.
- Live-Work spaces are now permissible along Wharton Street.

Residential

- New permits for carriage houses will create more affordable rental housing.
- The minimum size requirements for residential lots has been reduced, providing more options for subdividing. This will help provide more affordable housing in parts of the community that already have supporting infrastructure.
- Residential Pocket Neighborhoods – a larger lot of land containing several cottages with communal green spaces and parking areas – is a new provision that aims to provide more housing options close to local amenities.



Patrick Murphy

District of Summerland - Values of Building Permits

Year	Residential				Non-Residential		Total	
	Number of Units	Value \$'000			Value \$'000		Value \$'000	
	Summerland	BC	Summerland	BC	Summerland	BC	Summerland	BC
2007	81	40,932	25,154	8,611,723	12,294	3,932,968	37,448	12,544,691
2008	94	30,110	26,839	6,899,289	2,046	3,677,866	28,885	10,577,155
2009	26	18,607	14,000	4,491,075	2,542	3,138,810	16,54	7,629,885
2010	43	28,984	20,129	6,705,888	3,864	3,017,921	23,993	9,723,809
2011	23	25,745	14,097	6,113,406	6,350	3,136,361	20,447	9,249,767

Source: Statistics Canada Note: Detailed non-residential permits data can be found on our Website: www.bcstats.gov.bc.ca

Housing & Development

Average Assessed House Value between 2008 - 2014

Year	Average assessed House Value		Taxes and Charges	
	\$	% change	\$	% change
2008	\$466,000		\$2,123	9.4
2009	\$467,000	.21	\$2,319	9.2
2010	\$445,000	-4.71	\$2,356	1.6
2011	\$446,000	.22	\$2,432	3.2
2012	\$442,000	-.9	\$2,565	5.5
2013	\$417,000	-5.66	\$2,590	1.0
2014	\$419,000	.48	\$2,633	1.7

Source: Source: BC Assessment and the District of Summerland 2014

“I like to live in Summerland. People from around the world, who've lived around the world come here and say 'you know, this is the best place to live’”

— Jai Zachary, Founder/CEO, ElectroMotion Energy



Eric Simard | TOTA | SCC

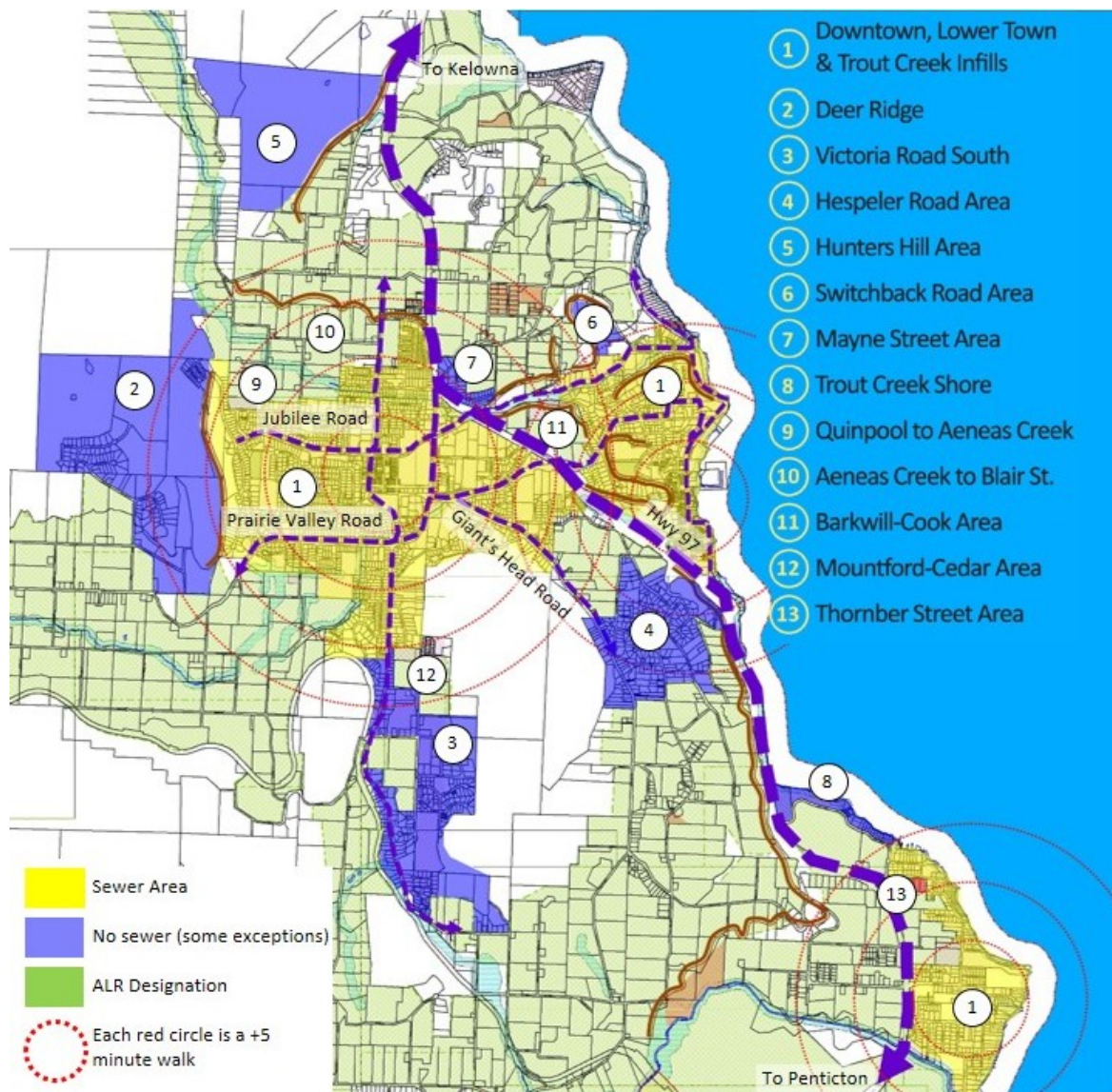
Occupied private dwelling characteristics (2011)

	Summerland	B.C.
Total private dwellings	5,173	1,764,635
Total private dwellings occupied by usual residents	4,779	1,764,640
Single-detached house	3,475	842,120
Semi-detached house	150	52,825
Row house	310	130,370
Apartments; duplex	160	184,355
Apartment, building that has five or more storeys	0	143,970
Apartments in buildings with fewer than five storeys	560	361,150
Other single attached house	20	2,885
Moveable dwelling	105	46,960
Number of owned dwellings	3970	1145050
Percentage of owned dwellings	83.4	70.0
Number of rented dwellings	780	493995
Average number of rooms per dwelling	7	6
Number of dwellings constructed before 1986	2910	1017335
Dwellings requiring major repair		
- as a % of total occupied private dwellings	5.1	7.2
Number of dwellings constructed between 1986 - 2006	1635	625815
Percentage of households spending 30% or more of 2010 total income on shelter cost	23.0	30.3
Average monthly shelter cost	\$934	\$1,156

Statistics Canada. 2012. Summerland, British Columbia (Code 5907035) and Okanagan-Similkameen, British Columbia (Code 5907) (table). Census Profile. 2011 Census. Statistics Canada Catalogue no. 98-316-XWE. Ottawa. Released October 24, 2012. <http://www12.statcan.gc.ca/census-recensement/2011/dp-pd/prof/index.cfm?Lang=E>

Nighborhood Profiles and Proximity

Summerland is divided up into 13 areas. Three Summerland schools are located in the downtown core, which is minutes away from shops and transportation. There is also an elementary school located in the Trout Creek neighborhood. Whether you want to live within walking distance of downtown amenities, or have a home in a semi-rural location, there is a neighbourhood area in Summerland to suit your family. Look for the perfect view of orchards and vineyards in Prairie Valley, or be within walking distance of the beach in Lower town or Trout Creek.



Real Estate Resources

www.realtor.ca

Realtor.ca is run by the Canadian Real Estate Association. It is a valuable search tool when looking to buy or sell property.

<http://www.soreb.org/>

The South Okanagan Real Estate Board is a good resource to find statistics, real estate news, listings and realtor information.

Utilities & Services

Summerland's Water Systems

- Summerland's water supply system is split between irrigation district and domestic supply. There is currently no metering system in place, however, it is estimated that domestic use ranges from the 15%-30%.
- There are approximately 185 km of water pipeline.
- The 2004 assessment roll lists 1151 irrigation users, 4669 urban units, 102 acres of commercial development and 175 acres of industrial development.
- The District controls 25 water licenses within the two main watersheds, Trout Creek and Garnet Valley, and it is the primary water users.



Trout Creek System

- Includes eight active reservoirs storing 11,600 acre-feet of water, supplying approximately 90 per cent of the district, and including Thirk Dam (expansion), Crescent, Whitehead, Isintok and the four headwater reservoirs.
- The District of Summerland possesses Water licences to store 12,500 acre-feet in the Trout Creek system, and to use 15,000 acre-feet per year.

Garnet Valley System

- Holds 1,963 acre-feet and supplies Garnet Valley.

Source: District of Summerland, Official Community Plan

Water Metering

Residential properties are currently charged a flat rate for water usage. Some commercial properties are currently on a flat rate and others are metered. However, The District of Summerland is reviewing their water meter rate schedule and more information is available on the District's website:

http://www.summerland.ca/departments/finance/water_meters_billing.aspx

Waste Water System

Summerland has approximately 55 kilometers of Sewer lines, 5 lift stations, a Sewer Treatment Plant and over 700 manhole covers.

The Wastewater Treatment Plant, lift stations, sewer lines, manholes and siphon are maintained by the District of Summerland.

From a servicing perspective, the single most significant development in Summerland has been the introduction of wastewater collection and treatment for most of the urban areas. These areas include: Downtown, Trout Creek, Lower Town and Crescent Beach neighbourhoods. The introduction of waste water collection means the ability to infill and densify within urban areas has greatly increased.

Landfill and Waste Management

Landfill name: Summerland Municipal Landfill

Location: 7202 Bathville Rd

Capacity left at current site: Until 2056

Notes: Improvements to compacting and recycling are expected to increase the long-term viability of the landfill.

Source: District of Summerland – www.summerland.ca

Utilities & Services

“The new administration and council are doing a great job of aligning the growth strategy here for businesses. The fact that we are able to work with a government utility and have a contract with them here I think speaks volumes to the fact that we really do have a good joint partnership and I don't think you could get that anywhere else.”

— Jai Zachary, Founder/CEO, ElectroMotion Energy



Electric Power

Provider: Nelson Hydro

For current rate information:

<http://www.fortisbc.com/About/RegulatoryAffairs/ElecUtility/Rates/Pages/default.aspx>

Source: BC Hydro, FortrisBC, 2011.

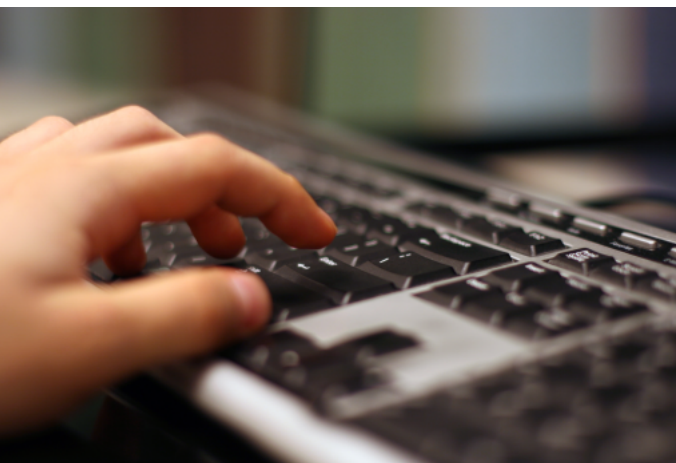
Natural Gas

Provider: FortisBC

For Basic charge per month:

fortisbc.com/NaturalGas/Business/Pages/default.asp

Source: Pacific Northern Gas Inc, FortisBC, 2011.



Telecommunications

Provider: Telus

Switch Technology: Digital

ISDN Available

Fiber Service Provided

Source: Terrace, 2014.

Day Care Options in Summerland

When moving to a new community, finding suitable child care options are important. The Province of BC provides several useful search tools. Parents can search for licensed child care facilities by city, by postal code and by license category using the Child Care Programs Map. http://www.mcf.gov.bc.ca/childcare/programs_map.htm

Enter Summerland in the city search option at the bottom of the page. The resulting map will provide a number of locations in town. Click on each location directly to get addresses and specific details regarding each available program.



If you are also interested in searching for registered license-not-required child care providers, please contact the local Child Care Resource and Referral Program office. <http://www.ccr.bc.ca/>
Enter Summerland in the search bar. (The regional office serving a number of area communities is located in nearby Penticton.)

Pre-School and Early Childhood Education

- **StrongStart** is a free preschool program offered through the Okanagan-Skaha school district (www.sd67.bc.ca). It is primarily focused on 0-5 year old children and their parent/caregivers. Younger siblings are also welcome. In Summerland, the program is located at Giant's Head Elementary School, and is open Monday to Fridays (8:45 — 11:45) on School days only. Families may drop into the program whenever it meets their needs.

- **Okanagan Boys and Girls Clubs** www.boysandgirlsclubs.ca 2504-404-0440. Early childhood programs from birth to 5 years. (Free)

- **Summerland Montessori School and Prairie Valley Pre-School**
<http://summerlandmontessorischool.wordpress.com/>

- **Summerland Christian Playschool**
<http://summerlandbaptist.ca/connect/children/item/playschool>

- **Summerland Library**
Offers preschool storytime, toddlers time, Parent and Child Rhymetime, books for loan and more.
250-494-5591 www.orl.bc.ca (Free)

Education: Schools

“Summerland is a really beautiful place but beyond that it's got all three levels of schooling for children which is great. We need to know we can keep our children in town for school as well as extra curricular activities.” — Gillian Stohler, Summergate Winery



School Populations, end of May, 2013:

Giant's Head Elementary	322
Trout Creek Elementary	214
Summerland Middle School	314
Summerland Secondary School	463

For information on all available programs, visit www.sd67.bc.ca

SD 67 students yield above-average test scores

In 2012, an annual assessment from the Ministry of Education showed that students of School District 67 are yielding above average test scores in the subjects of reading, writing and numeracy.

In Grade 4, 84 per cent of students in the district met or exceeded expectations in the subject of reading, compared to the provincial average of 70 per cent. Approximately 89 per cent met or exceeded expectations in writing, 17 per cent higher than average. In the subject of numeracy, 80 per cent tested at or above the bar, 12 per cent higher than average.

In Grade 7, district students tested 16 per cent above average in reading, 16 per cent above in writing and 6 per cent above in numeracy. These results have remained consistent since 2008.

Summerland School Contact information

Giants Head Elementary

10503 Prairie Valley Rd
Box 3000 V0H 1Z4
(250)770-7671
dmullin@summer.com

Summerland Montessori School

10317 Prairie Valley Rd
V0H 1Z0
(250)494-7266
SMSoffice@shaw.ca

Summerland Secondary School

9518 Main St
Box 2501 V0H 1Z0
250-770-7650
sss@summer.com

Trout Creek Elementary

5811 Nixon Rd
Box 3000 V0H 1Z4
(250) 770-7665
jredde@summer.com

Summerland Middle School

13611 Kelly Ave
Box 3000 V0H 1Z4
(250) 809-7783
sms@summer.com

Home School Association

250-494-1912

Education: Post Secondary

Okanagan College



The Okanagan College campus in Penticton is a short 15 minute drive from Summerland and bussing options are available. This is the College's 2nd largest campus in the region offering a full range of programs including numerous trade and diploma options.

University bound students are able to complete 2 years towards arts or sciences degrees, and 3 years towards business administration degrees before transferring to a University.

This allows local students to live at home providing tremendous cost savings to families. A new BC Transit bus service between Summerland and Penticton provides more flexibility for local students.

University of British Columbia



UBC is one of North America's largest public research and teaching institutions, and one of only two Canadian institutions consistently ranked among the world's 22 best universities. UBC opened its Kelowna campus in 2005 as a distinctive small university campus.

The UBCO campus is growing to serve the needs of our region and increasing access to the internationally recognized UBC degree. UBCO features small class sizes, experiential learning, community involvement and direct access to research activity. Enrollment at UBCO for September 2013 is a record 8,346 students.

Continuing Education and other Resources

Name	Location	Courses
Okanagan College – Summerland Centre	13211 Henry Ave	Continuing education courses available
ConnectEd Summerland Learning Centre	9518 Main Street	Humanities & Planning 10
360 Learning Academy	#102-9523 Main St	Tutoring for students of all ages, specializing in Middle and High School. Assistance with Math, Science, English, French, Spanish and Study Skills.

Medical Services

Summerland has readily available health care services. The community is serviced by fifteen physicians and five dentists.

Summerland Health Centre

Summerland's Community Health Centre offers a variety of services in one location. Community Health Centres do not have acute care beds, but may provide: basic laboratory and radiology; urgent care; outpatient ambulatory care; community services; long term residential care services; and/or on-site doctors' offices.

Location: 12815 Atkinson Road, Summerland

Contact: (250) 404-8000

Walk-in Clinic

The Walk-in Medical Clinic provides non-emergency health care services on a walk-in basis and includes a family practice. They offer evening walk-in clinic hours Monday – Friday, and Saturday, Sunday and statutory holiday hours are also available.

Location: 13009 Rosedale Ave

Contact: (250) 404-4242

Penticton Regional Hospital

For core medical and surgical specialty services, Summerland residents are served by the Penticton Regional Hospital (PRH) just 15 minutes drive to the south. Emergency Services operates 24 hours/day; 7 days/week.

Location: 550 Carmi Avenue, Penticton

Contact: (250) 492-4000

Public Transportation

Type	Name	Service Area	Operator	Phone
Summerland				
Bus	BC Transit	Summerland and Trout Creek to Penticton	BC Transit	(250) 492-5814
Bus	Greyhound Canada	Transport cities/towns in the region	Greyhound Canada	(250) 494-8009
HandyDART shuttle service	HandyDART	Summerland	Penticton & District Community Resources Society	(250) 490-6145
Taxi	Summerland Taxi	Summerland & airport transport	Michael Hills, owner	(250) 494-6651

Welcome to

Vehicle rental	Budget Rent-a-Car	Penticton and area	Budget Rent-a-Car	(250) 493-0212
Vehicle rental	Best Choice Car and Truck rental	Penticton and area	Best Choice Car and Truck rental	(250) 490-3339
Vehicle rental	National Car Rental	Penticton and area	National Car Rental	(250) 487-3330
Shuttle	Ambrosia Tours	South Okanagan, and airport shuttle service to Kelowna	George Railton, owner	(250)492-1095

Community Services:

Community Support Services



“We found that the spirit of volunteerism here in Summerland is really great. And what it does, it teaches our kids that you are really supposed to or are meant to help each other out when living in a community.”

— Gillian Stohler, SummerGate Winery

Eric Simard | TOTA | SCC

Summerland Seniors Drop-in Centre

Tel: (250) 494-9377
9710 Brown Street
Summerland BC

Summerland Food Bank & Resource Centre

Tel: (778) 516-0015
Summerland United Church
13204 Henry Avenue
Summerland, BC
<http://www.summerlandfoodbank.org/>

Summerland Asset Development Initiative (SADI)

Tel: (250) 494-9722
9117 Prairie Valley Rd
Summerland BC

Summerland Boys & Girls Club

Tel: (250) 404-0440
9111 Peach Orchard
Summerland, BC
<http://www.boysandgirlsclubs.ca>

YMCA Work BC

Tel: (250) 770-5627
103-13415 Rosedale Avenue
Summerland, BC
<http://ymcaworkbc.ca/>



Eric Simard | TOTA | SCC

Cultural Services



Kelly Funk | TOTA | SCC

The Summerland story is told at the Summerland Museum on Wharton Street, “where the spirit of our pioneers comes alive.” Peek into a tent house to glimpse how early settlers lived, observe the processes in a 1930’s fruit packing house and discover the “modern conveniences” in a 1920’s home. Pass through part of the original West Summerland Kettle Valley Train Station to see photos of the rail as well as the boats that sailed Okanagan Lake.

Summerland is also home to a vibrant arts scene. The Community Cultural Development Committee is very active in engaging the general public in the arts. The Summerland Art Gallery and Center, located downtown on Main Street is the heart of fine arts. The Art Gallery hosts regularly changing shows of BC artists, and organizes an amazing Summer Arts Program for Kids.

Each year community artists and young people create the unique and colorful banners that hang throughout town from May to October. These banners are available for purchase and make a great souvenir.

Dates to remember include Arts and Culture Week in April, The BC Cultural Crawl in August and Culture Days in September.

Galleries & Museums

Summerland Museum	9521 Wharton Street	(250) 494-9395	www.summerlandmuseum.org
Summerland Art Gallery	9533 Main Street	(250) 494-4494	www.summerlandarts.com
Studio Tour	Galleries Around Summerland		www.studiotour.wordpress.com

Theatre

Centre Stage Theatre	9518 Main Street	(250) 494-0447	www.summerland.ca/departments/parks
Summerland Singers & Players	Box 1217 Summerland B. C. V0H 1Z0		www.summerlandtheatre.ca

Public Library

Okanagan Regional Library Summerland Branch	9525 Wharton St	(250) 494-5591	www.orl.bc.ca/branches/summerland
--	-----------------	----------------	--

Places of Worship

Alliance Church

14820 N. Victoria
Tel: (250) 494-9975
<http://www.summerlandalliancechurch.com/>

Baha'i Faith

Tel: (250) 494-5065
Isasummerland@gmail.ca

Holy Child Catholic Church

14010 Rosedale Ave
Tel: (250) 494-2266
<http://www.holychildchurch.com/>

Hindu Cultural Society

2706 Johnson St
Tel: (250) 494-0851

Kingdom Hall of Jehovah Witnesses

9518 Julia St
Tel: (250) 494-1125

Summerland Baptist Church

10318 Elliot St Box 454
Tel: (250) 494-3881
<http://www.summerlandbaptist.ca/>

St. John's Lutheran Church

15244 N Victoria Rd
Tel: (250) 494-9309
<http://sjlcssummerland.ca/>

Pentecostal Church

9918 Julia St Box 550
Tel: (250) 494-8248
<http://www.summerlandpentecostal.com/>

Presbyterian Church

5505 Butler St
Tel: (250) 494-3291

Sonoka Worship Centre

Tel: (250) 494-4228

St. Stephen's Anglican Church

9311 Prairie Valley Rd
Tel: (250) 494-3466
<http://summeranglican.ca/>

United Church

13204 Henry St
Tel: (250) 494-1514
<http://summerlandunited.bc.ca/>



Recreation: Outdoor Activities & Attractions



When it comes to accessible, year-round recreation, the South Okanagan has something for everyone. Whether you're an adrenaline junkie looking for a challenge, or a foodie looking for that next great wine pairing, Summerland has something new with each passing season.

Parks and Beaches

Summerland is home to a string of beaches that will appeal to everyone, from the broad-sweeping Sun-Oka Park to small beaches located along the waterfront off of Lakeshore Drive. Next to our quaint downtown, Memorial Park is a year-round retreat and home to events like yearly car shows and the annual Action Festival.

Giant's Head Mountain

It is the sight that dominates Summerland's skyline, and it's where you can enjoy incredible views over Okanagan Lake throughout the year. Outdoor fitness aficionados can challenge themselves by hiking or running to the top.

Hiking and Biking

The trails around Summerland are a year-round playground, from leisurely strolls along the waterfront to miles of dramatic hiking. 10% of the province's Trans Canada Trail is located in Summerland.

Food and Wine

Touring Summerland's Bottleneck Drive Wine route is a popular pastime, with locals and visitors flocking to food pairing and music events. From bread made with locally milled flour, to two local coffee roasting companies, living in Summerland means being spoiled for your choice of artisan foods. Take advantage of local produce by shopping at the many fruit markets and the weekly Farmers Market, which is held downtown each Tuesday from May to October.

Gardens

The Summerland Ornamental Gardens draw visitors and locals throughout the year, and is a popular place for everything from picnics to wedding photos. Locals also have the opportunity to attend workshops on water-wise gardening and other topics.

Golf

Whether you're a novice or a seasoned player, golfing in Summerland combines challenge and relaxation. The Summerland Golf and Country Club offers a championship course with views of the Okanagan Valley and Trout Creek Canyon. If you're after a quick round, head to the 9-hole Sumac Ridge Golf and Country Club, located conveniently next to one of the oldest Estate wineries in B.C.

Find out more about Summerland attractions and things to do at www.tourismsummerland.com

Recreation:

Facilities & Activities

Recreational Amenities in Summerland

Try our Aquatic and Fitness facilities on Kelly Avenue, play some tennis at one of four tennis courts or throw some horseshoes at the Memorial Park Horseshoe Pitch. Skateboarders will enjoy a run at the Skateboard Park on Jubilee Road behind the Arena. During the winter months enjoy a game of curling at the Curling Club, or try out some of the nearby ski hills—the closest is Apex Alpine. Head into the wilderness on the outskirts of town for an ATV or snowmobile ride, or a trek on cross-country skis.



For full details of all recreational programs, visit www.summerland.ca and for more information on community clubs in Summerland, visit www.summerlandchamber.com.

Amenity	Details
Arena Complex	Hockey, Figure Skating, Community events. Ice surface is 200' x 85, with a capacity of 1,000 people.
ATV	Active ATV Club
Aquatic /Recreation Centre	25-metre indoor pool, newly renovated fitness centre, racquet ball, fitness classes, hot tub and Sauna room, ORCA Swimming Club.
Banquet Halls	Curling Club, Community Centre, Yacht Club, Summerland Arena, Royal Canadian Legion, Odd Fellows/ Rebekah Hall, Seniors Centre
Beaches	Peach Orchard beach/ Rotary beach/Powell beach and Sunoka Beach. All offer restroom and change room facilities and picnic areas.
Camping	Peach Orchard Campground/Provincial Park Camping/Private Camping Facilities
Curling Rink	Four sheets of ice. Recreational leagues.
Fishing	Summerland Trout Hatchery/Okanagan Lake/Agur Lake
Gardens	Research Station: 15 acre Ornamental Garden, with picnic tables
Golf Courses	Sumac Ridge Golf (9-hole) & Summerland Golf Club and Country Club (18-hole)
Hiking/Walking/Biking	Giants Head Mountain, Trout Creek / Sunoka, Okanagan Mountain Park, Peach Orchard Hill, Trans Canada Trail
Rodeo Grounds	Located on 70+ acres. Facilities include a large outdoor riding arena with grandstand, a warm-up arena, clubhouse, campgrounds and concession. Rental option available
Skate Park	Located on Jubilee Road behind Summerland arena.
Parks	<ul style="list-style-type: none"> •Giants Head Park: hiking, view vantage point •Memorial Park : Outdoor stage, war memorial, playground area, washrooms, horseshoe rings •Spirit Square at Peach Orchard beach: playground area, washrooms, picnic tables, outdoor stage •Kin Park: playground area •Sherwood Park: stands, 3 ball fields, washrooms •Dale Meadows Park: 4 ball fields, 3 soccer fields, washroom, 3 basketball courts,jogging tracks
Senior Centre	Drop-in Centre with regular activities and events.
Skiing	Close to major alpine and cross-country ski courses Apex Alpine Ski Hill, Crystal, Big White and Silver Star.
Tennis	4 public courses
Yacht Club	Founded in 1952, with more than 200 members.

Shopping



After years of quietly going about business, Summerland now finds the design of its intimate and quaint downtown to be “on trend.”

As many cities look to develop shopping experiences that promote angled parking (check), walkability (check) and a friendly neighbourhood feel (double check), Summerland’s downtown core continues to offer a laid-back style, with the added value of historic buildings for that extra dose of charm.

Summerland perfectly suits creative retailers who want to combine being part of a close-knit community with the financial prospects that come with close proximity to larger centres. In Summerland, you have space to grow your brand and capture a wide audience, with the Okanagan Valley at your doorstep and high speed internet at your fingertips.

“The biggest benefit to setting up a business in Summerland is the lifestyle that we can offer. It’s a beautiful setting. There’s no lineups, there’s no parking troubles and there’s recreational opportunities all over the place.”

— Ian McIntosh, Director of Development Services, District of Summerland



Annual Event Listing

Spring



Eric Simard | TOTA | SCC

- January 1: Polar Bear Swim
- January 11-19 : Winter Wine Festival
- April 20-27: Earth Week
- April 19: Easter Train with the Kettle Valley Steam Railway
- April 20 - April 26: Arts & Culture and Earth Week
- May 2 – 11: Spring Wine Festival
- May 2 & 3: Blossom Pageant
- May 11: Mother's day with the Kettle Valley Steam Railway
- May 15 – 19: Meadowlark Nature Festival
- May 16- 19: Blossom Run Show n Shine
- May 17: Opening day of the Kettle Valley Steam Railway & the Giant's Head Grind
- May 17 - June 16: Kettle Valley Steam Railways Spring Schedule
- May 8- 11: Good Will Shakespeare Festival
- May 10: Mother's Day Tea at the Summerland Library

Summer



Eric Simard | TOTA | SCC

- June 6, 7 & 8 : Action Festival 2014
- June 7: Action Festival Parade
- June 7: Giants Head Run
- June 8: Action Festival Kid's Fishing Derby
- June 13-15: Summerland Bluegrass Festival
- June 14 & 15: Father's Day Fun Fly with the Model Aeronautics Association of Canada
- June 14: Donuts for Dad at the Summerland Library
- July 5 – 13: Summer Wine Festival
- July 13: Gran Fondo Axel Merkx Bike Race
- June 15 & 29: Great Train Robbery & BBQ with Kettle Valley Steam Railway
- June 19 – September 1: Kettle Valley Steam Railway Summer Schedule
- July 13, 20: Great Train Robbery & BBQ with Kettle Valley Steam Railway
- August 3, 17, 24: Great Train Robbery & BBQ with Kettle Valley Steam Railway
- August 2- 4: Giants Head Freeride Longboard Competition
- August 4: UltraMan Canada

Annual Event Listing



Eric Simard | TOTA | SCC

Fall

- September 6 – October 13: Kettle Valley Steam Railway Fall Schedule
- September 7: Great Train Robbery & BBQ with Kettle Valley Steam Railway
- September 7: Kids of Steel Sprint Triathlon
- September 13: Apple Valley Cruisers Endless Summer Show n' Shine
- September 13 & 14: Summerland's 105th Fall Fair
- September 14: Terry Fox Run
- September 21: Great Train Robbery & BBQ with Kettle Valley Steam Railway
- September 21: Test of Humanity Mountain Bike Race
- October 3 – 12: Fall Wine Festival
- October 4: Pacific Agri-Food Research Centre 100th Anniversary Open House

Winter

- November 28: Annual Festival of Lights
- November 29 & 30: 4th Annual Light Up the Vines
- December 13 & 14: Summerland Christmas Express Trains with Kettle Valley Steam Railway
- December 19 – 24 : Summerland Christmas Express Trains with Kettle Valley Steam Railway



Eric Simard | TOTA | SCC

Resources



Sophia Jackson



Eric Simard | TOTA | SCC



Eric Simard | TOTA | SCC



Sophia Jackson



Eric Simard | TOTA | SCC

Government Job Bank, a government powered website for both job seekers and employers. The site has a job search, resume builder and job alerts. Click here to view: www.jobbank.gc.ca

Trade and Invest BC provides comprehensive community profiles.

Click here to view their information regarding Summerland:

<https://tools.britishcolumbia.ca/Invest/Pages/Profile.aspx?page=0&pCommunityID=530&type=2>

You can also compare the profiles of up to three communities at a time.

Summerland Capital, \$500,000 incubator fund created by the Summerland Credit Union

Click here for more information: <https://www.sdcu.com/Personal/>

Summerland Business Information, the district of Summerland has many helpful businesses resources on their website: <http://www.summerland.ca/business/>

WorkBC offers comprehensive labour market details and employment outlooks about each BC region.

Click here:

<http://www.workbc.ca/Statistics/Regional-Profiles.aspx> and select the Thompson- Okanagan region.



15600 Highway 97

PO Box 130

Summerland, BC, V0H 1Z0

Phone: (250) 494-2686

Fax: (250) 494-4039

www.summerlandchamber.com



13211 Henry Avenue Box 159

Summerland, BC, V0H 1Z0

Phone: 250 494-6451

Fax: 250 494-1415

Email: info@summerland.ca

www.summerland.ca