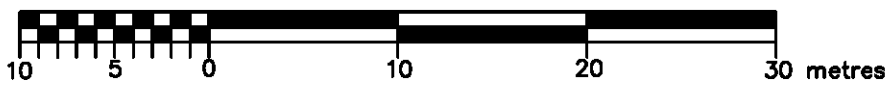


REFERENCE PLAN TO ACCOMPANY THE CORPORATION OF
THE DISTRICT OF SUMMERLAND BYLAW No. 2016-039
TO CLOSE PARTS OF ROAD DEDICATED ON PLANS 27858
AND 26768, BOTH DL 474, ODYD

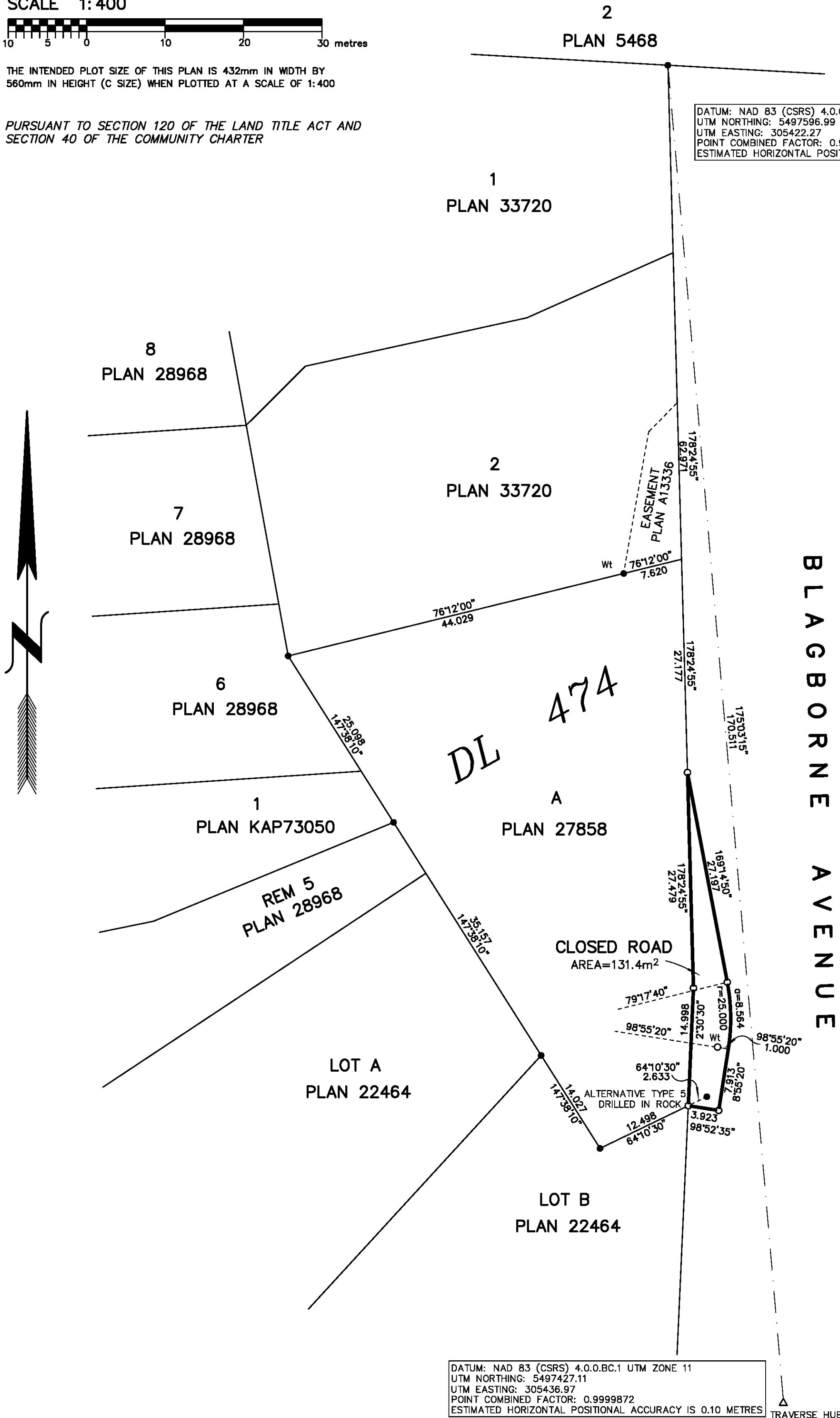
PLAN EPP66616

BCGS 82E.052
SCALE 1:400



THE INTENDED PLOT SIZE OF THIS PLAN IS 432mm IN WIDTH BY
560mm IN HEIGHT (C SIZE) WHEN PLOTTED AT A SCALE OF 1:400

PURSUANT TO SECTION 120 OF THE LAND TITLE ACT AND
SECTION 40 OF THE COMMUNITY CHARTER



DATUM: NAD 83 (CSRS) 4.0.0.BC.1 UTM ZONE 11
UTM NORTHING: 5497596.99
UTM EASTING: 305422.27
POINT COMBINED FACTOR: 0.9999872
ESTIMATED HORIZONTAL POSITIONAL ACCURACY IS 0.10 METRES

LEGEND

NOTE: THIS PLAN SHOWS ONE OR MORE WITNESS POSTS WHICH ARE NOT SET ON THE TRUE CORNER(S).

BEARINGS ARE GRID NAD83(CSRS) AND DERIVED FROM DUAL FREQUENCY DIFFERENTIAL GPS OBSERVATIONS AND REFERRED TO THE CENTRAL MERIDIAN OF UTM ZONE 11(121° WEST LONGITUDE) CONVERGENCE IS 02°03'00" AND IS TO BE SUBTRACTED FROM GRID BEARINGS TO CONVERT TO ASTRONOMIC BEARINGS

CONVERGENCE IS CALCULATED THROUGH THE NORTH WEST CORNER OF LOT A
ESTIMATED HORIZONTAL ACCURACY IS 0.10 METRES

THIS PLAN SHOWS HORIZONTAL GROUND-LEVEL DISTANCES BASED ON A MEAN ELLIPSOIDAL ELEVATION OF 500 METRES. TO COMPUTE GRID DISTANCES, MULTIPLY GROUND-LEVEL DISTANCES BY THE MEAN COMBINED SCALE FACTOR OF 0.9999872

THE UTM COORDINATES AND ESTIMATED HORIZONTAL POSITIONAL ACCURACY ACHIEVED ARE DERIVED FROM DUAL FREQUENCY GNSS OBSERVATIONS AND PROCESSED USING THE PRECISE POINT POSITIONING APPLICATION OF NATURAL RESOURCES CANADA

ALL DIMENSIONS ARE IN METRES AND DECIMALS THEREOF
UNLESS OTHERWISE NOTED

- △ TRAVERSE HUB
- STANDARD IRON POST FOUND
- STANDARD IRON POST PLACED

THIS PLAN LIES WITHIN THE OKANAGAN SIMILKAMEEN
REGIONAL DISTRICT

THE FIELD SURVEY REPRESENTED BY THIS PLAN WAS COMPLETED
ON THE 05th DAY OF OCTOBER, 2016.
ROSS MANDEVILLE, BCLS 918

DATUM: NAD 83 (CSRS) 4.0.0.BC.1 UTM ZONE 11
UTM NORTHING: 5497427.11
UTM EASTING: 305436.97
POINT COMBINED FACTOR: 0.9999872
ESTIMATED HORIZONTAL POSITIONAL ACCURACY IS 0.10 METRES

TRAVERSE HUB

MANDEVILLE LAND SURVEYING INC.
PROFESSIONAL LAND SURVEYORS

582 MARTIN STREET
PENTICTON, B.C. V2A 5L4
Phone: (250) 488-6377

FILE 14-122
DWG. 14-122B