

**Council sets strategic priorities**

Council has set the strategic priorities that will chart the course of the municipality over the next four years. The process started with listening to citizens concerns during the election campaign. Soon after the election, the new Council sat down with senior staff to establish four priority areas, each supported by a number of actionable projects and initiatives.

They are:

**1. To protect and enhance core infrastructure and essential service**

- pave more roads, starting with Dale Meadows Road from Victoria to Haddrell and Jubilee Road from Rosedale and Victoria
- organics processing facility
- watershed protection
- extend sewer, including to Deer Ridge
- extend water separation for irrigation supply
- review development cost charges

**2. To provide good governance**

- municipal staff retention
- improve public communications
- work with Chamber of Commerce to explore a hotel tax for tourism promotion
- focus on inter-governmental relations including First Nations reconciliation
- review various bylaws and policies

**3. To provide an adaptable and affordable community**

- implement energy strategy (solar project, net metering review)
- pursue the development of an eco-village
- prioritize affordability by supporting BC Housing opportunities and free transit

- engage the community on infill development
- advocate for a Food Hub
- implement the Climate Action Plan
- explore alternative municipal revenue opportunities

**4. To enhance our quality of life**

- hold a referendum for a new Recreation Centre (swimming pool)
- work with partners and senior government to establish a primary care centre
- implement Parks and Recreation Master Plan (dog park, tennis courts, Rodeo Grounds)
- implement Downtown Neighbourhood Plan (Wharton Street upgrades, entrance to Memorial Park)
- implement Waterfront Concept Plan (Kiwanis pier, year-round washrooms)
- implement Trails Master Plan (Giant's Head Mountain project—phases 3 and 4)

All projects have a target start and completion date that staff will use to prepare their annual workplans and to draft operational and capital budgets for Council approval. The strategic priorities will be reviewed quarterly and updated if required, and the municipality's Annual Report will outline progress made over the course of each year.

For further details, visit <https://www.summerland.ca/your-city-hall/mayor-council/strategic-priorities>.

**Summerland Rodeo Grounds Master Plan**

Round two of engagement includes community input on two draft concept designs. A Public Open House to present the designs is scheduled for

Tuesday, February 28 at 4:30 PM—6:30 PM (drop-in anytime)  
George Ryga Arts & Cultural Centre (9225 Wharton St.)

The concept designs will be posted on the project web page as well as an online public survey. Visit [www.summerland.ca/rodeo-grounds-master-plan](http://www.summerland.ca/rodeo-grounds-master-plan) for details.

**2023 increased property assessments**

A common misconception is that a significant change in your assessed property value will result in a proportionately significant change in your property taxes. This is not correct!

The most important factor is not how much your assessed value has changed, but how your assessed value has changed relative to the average change for your property class in your municipality or taxing jurisdiction. In Summerland, residential property assessments have increased approximately 13.8%, therefore, if your assessment has changed at that average rate, you should not see much of a change to your municipal taxes.

The following table, taken from the BC Assessment website, provides a summary of potential tax impacts based on assessment changes.

	Your Property's Value Change	Property Tax Impact
1.	 LOWER than Average Change for Property Class	Taxes Likely* DECREASE
2.	 SIMILAR to the Average Change for Property Class	Taxes Likely* DO NOT CHANGE
3.	 HIGHER than Average Change for Property Class	Taxes Likely INCREASE

We encourage residents to visit the BC Assessments website [www.bcassessment.ca](http://www.bcassessment.ca) for further information on this and any other property assessment related items.

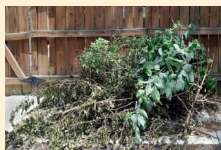
**Snow course survey**

Snowpack readings are taken monthly from January until the snow is melted. Average snow depth and average water equivalent (amount of water contained in the snow) are recorded and are compared to the historical average. Snowpack readings from January 1 measured 189% of historical average for the Summerland Reservoir and 151% for Isintok Lake. For further information visit [www.summerland.ca/city-services/water/snow-course-survey](http://www.summerland.ca/city-services/water/snow-course-survey).

**Yard and garden waste curbside collection**



Yard & Garden Waste curbside collection begins the week of **February 21 to 24** on your regular garbage collection day.



**Pothole reporting**

Potholes are created when heavy precipitation or snow melt occurs, standing water results and leads to soft gravels under the asphalt. This is exacerbated with constant freeze/thaw cycles when the temperatures hover around the freezing mark. As water freezes and expands within and below the asphalt, the cracks expand and the asphalt breaks apart.

The ideal solution for potholes is to cut out the broken asphalt, replace the base gravels and reseal the road with hot mix asphalt. Unfortunately at this time of year, hot mix asphalt is unavailable so we need to turn to cold mix asphalt. Cold mix asphalt is not as effective in the potholes, but does provide an element of sealing the surface of the road to protect the base gravels from moisture.

Please email road requests or inquiries to [works&infrastructure@summerland.ca](mailto:works&infrastructure@summerland.ca) or call 250-494-0431.



"Do what you can, with what you have, where you are."  
-Theodore Roosevelt.



## Christmas tree pick up campaign

Thank you to all Summerland residents who participated in the Christmas tree pick up campaign. The Summerland Fire Department and 2023 grad class raised \$3225.00! All trees that were picked up were chipped for compost.



## Family Day activities

The Province of British Columbia has provided the District of Summerland a grant in support of our free, community Family Day activities. Come celebrate BC Family Day with the District of Summerland. This Feb 17-20, we will have public swimming, public skating and our 3<sup>rd</sup> Annual Family Scavenger Hunt!

FREE public swimming on Sat, Feb 18 from 2:00—3:45 PM & 5:15—6:30 PM.

FREE public skate & skate rentals on Sun, Feb 19 from 1:00—2:30 PM & 6:00—7:00 PM.

Our 3<sup>rd</sup> Annual Family Scavenger Hunt event will take place all weekend. The Scavenger Hunt list will be released on Feb 17.

For more details, visit [www.summerland.ca/FamilyDay](http://www.summerland.ca/FamilyDay) or @SummerlandRec on Facebook.



## Invasive species: top ten tips

This time of year presents a great opportunity to brush up on your invasive species knowledge and learn about ways you can help.

1. Learn to identify invasive species. Check out local websites such as [www.oiso.ca](http://www.oiso.ca) and [www.oasiss.ca](http://www.oasiss.ca)
2. Choose garden plants wisely. Be suspicious of plants promoted as “fast spreaders” or “vigorous self-seeders.”
3. Avoid using wildflower seed mixes unless you are confident the species are native.
4. Dispose of invasive plants carefully. Do not compost or put in yard waste.
5. Reduce soil disturbances and re-seed disturbed soils with a suitable seed mix.
6. Avoid picking plants from roadsides or other disturbed areas.
7. When travelling, check your vehicle, boat, bike, camping gear, shoes and pets for invasive species that may have hitched a ride. Clean everything thoroughly.
8. Share your knowledge with friends and neighbours.
9. Report any suspicious plants or insects to [OASISS@shaw.ca](mailto:OASISS@shaw.ca)
10. Get involved with local efforts to control invasive plants or replant with native species.

## Keep up to date

The District posts community updates to our website and Facebook account. Council meetings can be viewed on the District’s YouTube channel [www.youtube.com/c/DistrictofSummerland](http://www.youtube.com/c/DistrictofSummerland)

website: [summerland.ca](http://summerland.ca)

Facebook: [facebook.com/SummerlandBC](https://facebook.com/SummerlandBC)

Sign up for our monthly newsletter online:

[www.summerland.ca/your-city-hall/newsletter-subscribe](http://www.summerland.ca/your-city-hall/newsletter-subscribe)

## Summerland Recreation Centre Project

The District of Summerland continues to explore opportunities for the eventual replacement of the Summerland Aquatic & Fitness Centre which at 47-years old, is at the end of its serviceable life. No decisions have been made, and a public referendum will be conducted if the project is to move



forward. Please visit our web page and Regional Connections community engagement site for ongoing project updates [www.summerland.ca/rec-centre](http://www.summerland.ca/rec-centre).

## We’re hiring—summer students!

The District of Summerland is hiring students from **May 1 to September 1, 2023**. \$20/hr + 14% in lieu (\$22.80/hour). Details are available at [www.summerland.ca/jobs](http://www.summerland.ca/jobs).

## Lighting energy savings

### Use lighting controls to help save electricity

It can be hard to remember to turn off lights and other devices when they’re not in use. Lighting controls like timers and occupancy sensors work automatically once installed, allowing you to set it and forget it.



### Light timers

Using light timers for the lighting in and outside of your home is a convenient way to automatically turn lights on and off at certain times of the day. This can help reduce your energy use by only using light when and where you need it, and reducing the likelihood of leaving lights on unintended. They can also increase your home’s safety and security.



Advanced light switches feature programmable, digital timers that provide you with greater control and flexibility to create a schedule for your lighting. Set exterior lights to turn on at dusk and off at dawn or set interior lights to turn on and off for a lived-in look while you’re away on vacation.

### Occupancy sensors for lights

Occupancy sensors turn the light on when motion is detected in the covered range. You can typically set them to turn off when motion is no longer detected for 30 seconds, 5 minutes, 15 minutes, or 30 minutes. More sophisticated sensors can slowly dim the light rather than a hard shutoff. You can use occupancy sensors in your closets and pantries, garages, and in storage and utility rooms.

### Light dimmers

Light dimmers allow you to control the output of the light bulbs they’re connected to. Dimming the lights reduces your electricity use. It also creates a gentler, ambient light that’s easier on the eyes, and prolongs the lifespan of your bulbs.



### Pair lighting controls with LEDs

If you’re adding light controls to switches around your home, it’s a good time to also make sure that you’re using energy-efficient LED light bulbs in each socket to maximize your savings. Check the packaging on your lighting controls to ensure they’re compatible with your bulb type.

If you’re looking for added convenience, smart light bulbs allow you to control your home’s lights from anywhere using your phone.

## Recycling curbside collection

Did you know you can place the following materials in your curbside recycling:

- Paper party decorations
- Single use paper and plastic bowls, such as take-away containers, microwaveable bowls
- Clean plastic utensils (no metal utensils)
- Plastic garden pots
- Clean aluminum foil pie plates and aluminum foil baking trays
- Plastic coat hangers with no metal parts



The Summerland Landfill Recycling Depot also accepts more materials! To learn more visit [www.recyclebc.ca](http://www.recyclebc.ca) for details on what can be recycled.