

Summerland Wins FortisBC Efficiency in Action Award



The District's efforts to reduce energy use and greenhouse gas emissions in municipal operations have been recognized by FortisBC through an Efficiency in Action Award.

Specific actions taken include completing detailed energy audits on all 12 major municipal buildings, replacing aging HVAC equipment with high-efficiency options, upgrading streetlights and lighting in the arena to LEDs, and a new water treatment process in the arena that eliminates the need for hot water when building and resurfacing ice.

These efforts will save the community well over \$80,000/year in energy costs and are contributing to Summerland's efforts to become carbon neutral in operations.

An update to Summerland's Corporate Climate Action Plan is underway and is expected to be presented to Council and the community this fall.

More information on all of Summerland's climate action initiatives can be found at www.summerland.ca/climate-action.

New Electric Zamboni for Summerland

Summerland's ice re-surfacer was due for replacement this year; the District of Summerland made the decision to purchase an electric lithium ion machine versus replacing with the traditional propane re-surfacer or the lead acid electric version.

Considerations including savings through low cost electric charging in comparison to the cost of propane consumption, safety issues with filling, transporting, and storing propane, reducing strain on arena ventilation system, the low maintenance costs, and becoming a more eco-friendly arena were key factors in decision making. Historically, the Zamboni utilized approximately 120 litres of propane per week during the ice season.

The lithium option is new technology and was offered on the bigger models this year. Summerland was the first community to have this model with the lithium battery on the ice according to the supplier. The lithium battery boasts a life cycle of up to four times that of a lead acid battery while delivering a consistent output.

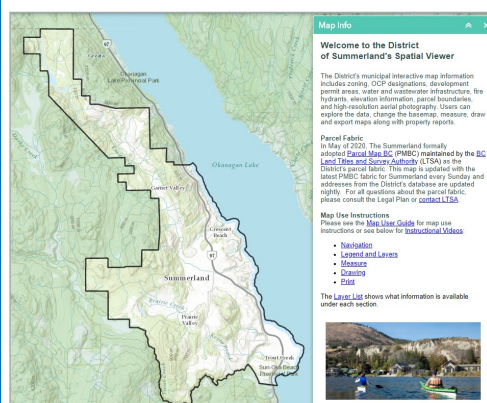
The Climate Action Reserve Fund provided some funds to support the project. A reduction of approximately 140 tonnes of Green House Gases (GHGs) is expected over the lifetime of the equipment. This project helps support the District of Summerland's GHG emissions reduction goals and is in line with recommendations from both our Official Community Plan and the Corporate Energy & Emissions Plan. The project also qualifies for Plug-In BC's Special User Vehicle Incentive Program rebate.

"Once again Summerland scores in our efforts to transition to a low-carbon future," says Acting Mayor Doug Holmes. "There are also a hat-trick of financial benefits for going electric: the District saves on fuel, on maintenance costs, and on the reduced strain on the arena's ventilation system due to the elimination of carbon emissions."



New Interactive GIS Map

On October 23, 2020 the District launched its new interactive online mapping application, the [Summerland Spatial Viewer](http://www.summerland.ca/spatial-viewer).



This app includes zoning, OCP designations, development permit areas, water and wastewater infrastructure, fire hydrants, elevation information, parcel boundaries from ParcelMap BC and high-resolution aerial photography for multiple years including 2020. Users can explore the data, choose from several basemaps, measure, draw and produce prints along with property reports. Written and video instructions are included to help users navigate the new system.

This year GIS Day occurs on November 18. This is the day the previous map on mapping.summerland.ca is scheduled to be retired. To celebrate, the District's Facebook page will have information and tips for using the new Summerland Spatial Viewer posted all week.



Please visit <https://www.summerland.ca/planning-building/gis-mapping> for more information and to access the map.

District Facilities Update

Some District facilities have begun gradual re-opening plans. Call to check what hours facilities may be open to the public. Staff is available during regular business hours at the numbers below:

- Municipal Hall - General Enquiries: (250) 494-6451 Monday to Friday 8:30am - 4:00pm
- Development Services: (250) 494-1373

- Utility Billing: (250) 404-4047
- Property Tax/Accounts Receivable/Accounts Payable: (250) 404-4055
- Parks & Recreation: (250) 494-0447
- Fire Department (Non emergency): (250) 494-7211
- Works & Infrastructure: (250) 494-0431
- After Hours Emergency 3:30pm - 7:00am Monday to Friday, weekends or Statutory Holidays for Water/Sewer/Roads/Parks/Electrical Utility: (250) 493-0005

Art Chairs Installed in Summerland



The major arts festival, Lake Country ArtWalk, was cancelled this year due to the COVID-19 pandemic. The event organizers wanted to mark ArtWalk 2020 in some way and develop a special one-time community project. Their hope with this project is that we will meet their two-fold mandate, to support artists,

and to provide high quality artworks and art experiences for the general public in the Okanagan.

Approximately 45 wooden chairs in a Muskoka/Adirondack style were painted by Okanagan artists. They have turned each chair into a work of art. In addition to the image painted, a short, positive message has been incorporated into the painting in some way. Summerland Council supported the project and gave the approval to proceed with the art installation.

Three art chairs are on display at Peach Orchard Beach Spirit Square. These chairs have been painted by local artists: Ede Axelson, Megan Roberts and Eric Blais. The chairs have been placed 6 feet apart, which invites coming together, but still staying safe. The District of Summerland welcomes everyone to come to Peach Orchard Beach to view and enjoy the chairs.



Be Prepared for Winter Driving Conditions

- Ensure your vehicle is equipped for the weather – use winter tires.
- Maintain a safe following distance – look ahead, keep at least 4 seconds distance.
- Drop your speed to match road conditions – the posted speed is the maximum speed under ideal conditions.
- Watch for black ice – especially common in shaded areas, under an overpass and in areas where vehicles frequently stop.
- Accelerate and brake slowly – to maintain traction.
- Avoid sudden moves – look ahead to anticipate stops and turns well before they occur.
- See and be seen – turn your vehicle lights all the way on, so your tail lights come on as well.
- Be cautious when approaching District maintenance vehicles and staff – they are trying to get you safely to your destination.

Remembrance Day – November 11, 2020



There will not be a public Remembrance Day ceremony this year due to COVID-19. The Summerland Legion will make a video available afterwards of a flag raising and reading of the names of those who died in military service.

Please note Municipal facilities will be closed on Wednesday, November 11.

Keep Up To Date: The District will post community updates to our website, Facebook and Twitter Accounts. Please follow our pages to keep up to date on COVID-19 information and more.

Website: summerland.ca

Facebook: [facebook.com/SummerlandBC](https://www.facebook.com/SummerlandBC)

Twitter: twitter.com/SummerlandBC

Sign Up for our Online Newsletter:

<https://www.summerland.ca/your-city-hall/newsletter-subscribe>

Prepare Your Family For an Outage



Most power outages will be over almost as soon as they begin, but some can last much longer – up to days or even weeks. Power outages are often caused by freezing rain, sleet storms and/or high winds which damage power lines and equipment. During a power outage, you may be left without heating/air conditioning, lighting, hot water, or even running water. You may also be left without phone or internet service. If you do not have a battery-powered or crank radio, you may have no way of monitoring news broadcasts. In other words, you could be facing major challenges.

You can greatly lessen the impact of a power outage by taking the time to prepare in advance. You and your family should be prepared to cope on your own during a power outage for at least 72 hours.

Visit www.getprepared.gc.ca.

Final 2020 Yard & Garden Waste Curbside Collection

Final Yard & Garden Waste curbside collection is the week of December 1.

Summerland Sanitary Landfill Second Scale and Entrance Upgrades

Council participated in a ribbon cutting ceremony at the Summerland Sanitary Landfill on Thursday, October 22, 2020 to celebrate the completion of the entrance upgrades. Upgrades included a second scale, new scale house, improvements to the recycling area including its own entrance lane and the addition of a high voltage wildlife perimeter fence. **Please recycle first: Customers with both recycling and other waste materials should proceed to the recycling area prior to disposing other materials in the landfill.**



The District would like to thank residents for their patience during construction and to thank everyone involved in bringing this project to completion.

Winter Curbside Cart Collection

With winter on its way, many residents are wondering how to use their curbside collection carts. Please:

- Ensure the areas around and under your carts are clear of snow.
- Place carts as close as possible to the road, without obstructing the snow removal operations, street, sidewalk or bike lane.
- Do not place carts behind or on top of a snow bank.
- Ensure there is proper spacing around the carts:
 - 1m (3ft) of space on all sides;
 - 3m (10ft) of clearance above; and
 - 1.5m (5ft) of space from a vehicle.

The District of Summerland curbside collection contractor will make every attempt to pick up waste material during winter conditions. However, their top priority is resident and employee safety.

In the event of a collection delay:

- Please place your cart(s) out each day following the delay until collection can be completed safely.
- When service is resumed, the contractor will collect any extra accumulated material, at no extra charge, equivalent to the amount that would have been collected if service had not been temporarily interrupted.

For more information on winter curbside cart collection please visit www.summerland.ca/solidwaste.